



Department of Internal Medicine

Department of Internal Medicine

2010 Research Report

Lynell Klassen, MD, Chairman

Department of Internal Medicine

In this publication, you will find a summary of the **Annual Research Report for the University of Nebraska Department of Internal Medicine**. This report summarizes our publication and grant activity for calendar year 2010.

On Friday, June 3, 2011, the Department will recognize five individuals (three faculty, one fellow, and one resident) for their specific research accomplishments at the **Twelfth Annual Internal Medicine Research Awards** during Grand Rounds. There will be poster presentations of our awardees' work beginning at 11:30 a.m. directly outside of the Durham Research Center Auditorium. We hope you will have a chance to look at the posters before attending Grand Rounds.

A complete listing of individual publications and grants can be obtained by contacting Selaba Travis at 559-4875 or by e-mailing her (stravis@unmc.edu). We have obtained most of the supporting data for the report from the College of Medicine ADIS database (with some adjustments). Questions and comments about the information presented in the report are always welcome.

Internal Medicine Faculty 2010 Research Activity Summary



Executive Summary & Analysis

Special thanks to all faculty, house officers, postdoctoral fellows, students, and staff of the Department of Internal Medicine who perform and support the research mission of the Department. We also thank those faculty and residents who serve on the department's Research Council and are tireless in their research advocacy and research training efforts.

Last year our total publications increased by about 15%. We sustained that level of publication productivity maintaining the same number in 2010. Our overall grant activity was also stable in 2010. However, we had an increase in our federal funding by over \$1 million dollars that is a noteworthy accomplishment in these very tight federal funding times.

For the second year, we generated the data for this report largely from the COM database (ADIS) as opposed to the older departmental database. Grant information is tracked directly by Sponsored Programs and available in ADIS. We have modified the COM ADIS reports to include VA grant information that is not currently captured in this database but will be in the upcoming year. The category of funding most difficult to accurately define remains that of industry supported grants and contracts. Our amounts still reflect the total projected amount for the year, which can be reduced significantly by subject recruitment into a given trial.

Again, thanks for all the hard work. If you have questions or comments about the data contained in the report, please contact Deb Romberger, MD, or Selaba Travis. We look forward to further growth in our research program in 2011.

Internal Medicine Faculty 2010 Research Activity Summary



Full-Time Internal Medicine

Faculty:

MD's 139

PhD's 17

Other 5

Total 161

Type of Publications Total Publications

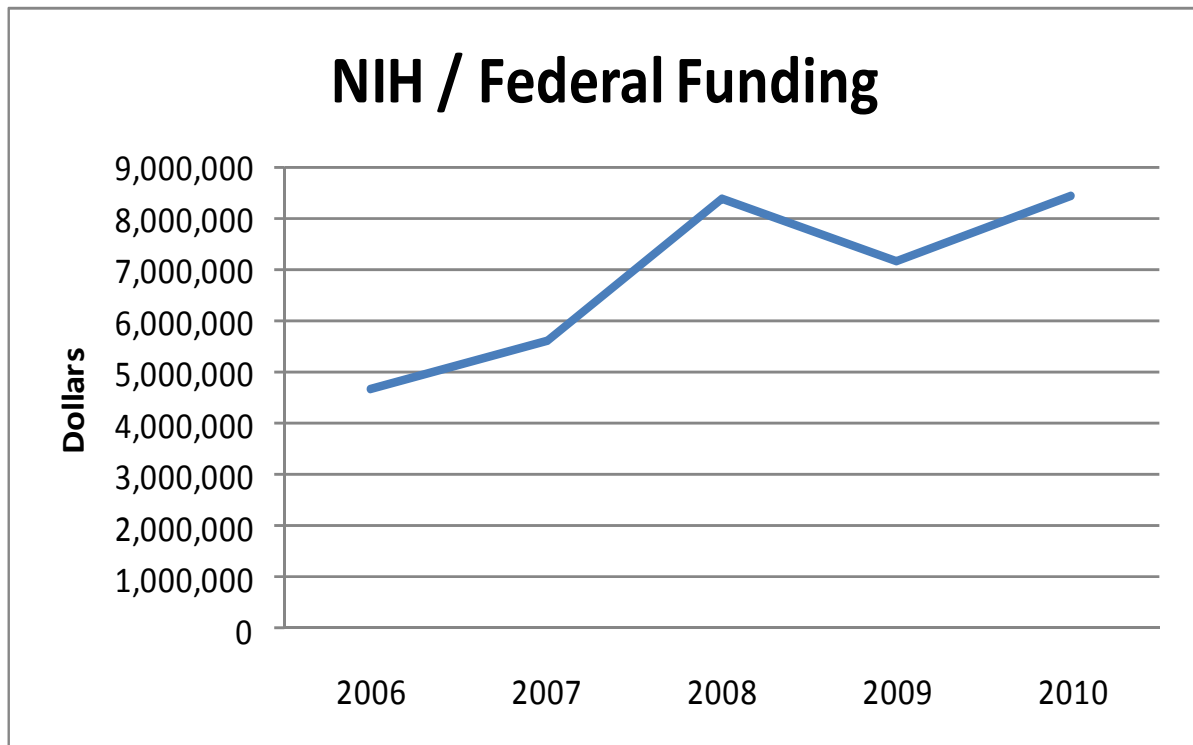
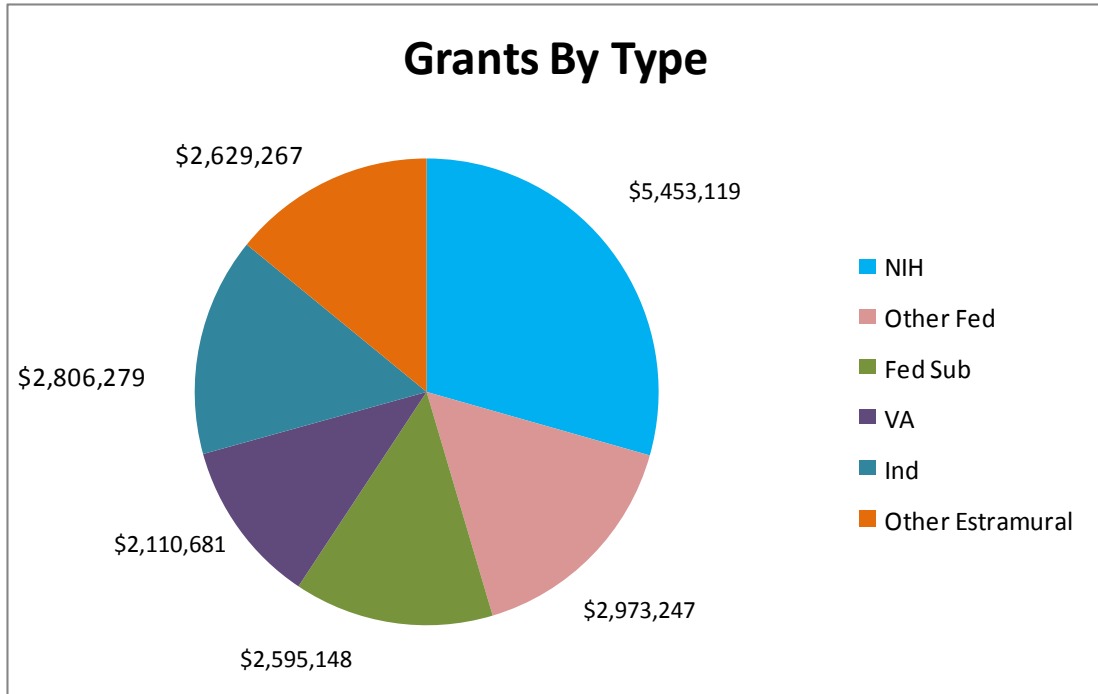
Journal Articles/Editorials/
Reviews 215Book Chapters/Books/
Book Edits 14

Multimedia 6

2010 Total 235

Funding Source	# of Grants	Direct	Indirect	2010 Totals
NIH/NSF/Other Federal	25	\$6,554,894	\$1,871,472	\$8,426,366
Federal Sub-contracted	4	\$2,595,148	\$0	\$2,595,148
VAMC	16	\$2,110,681	\$0	\$2,110,681
Industry	42	\$2,246,715	\$559,564	\$2,806,279
Other-Extramural	34	\$2,235,966	\$393,301	\$2,629,267
2010 Totals	121	\$15,743,404	\$2,824,337	\$18,567,741

Internal Medicine Faculty 2010 Grant Awards

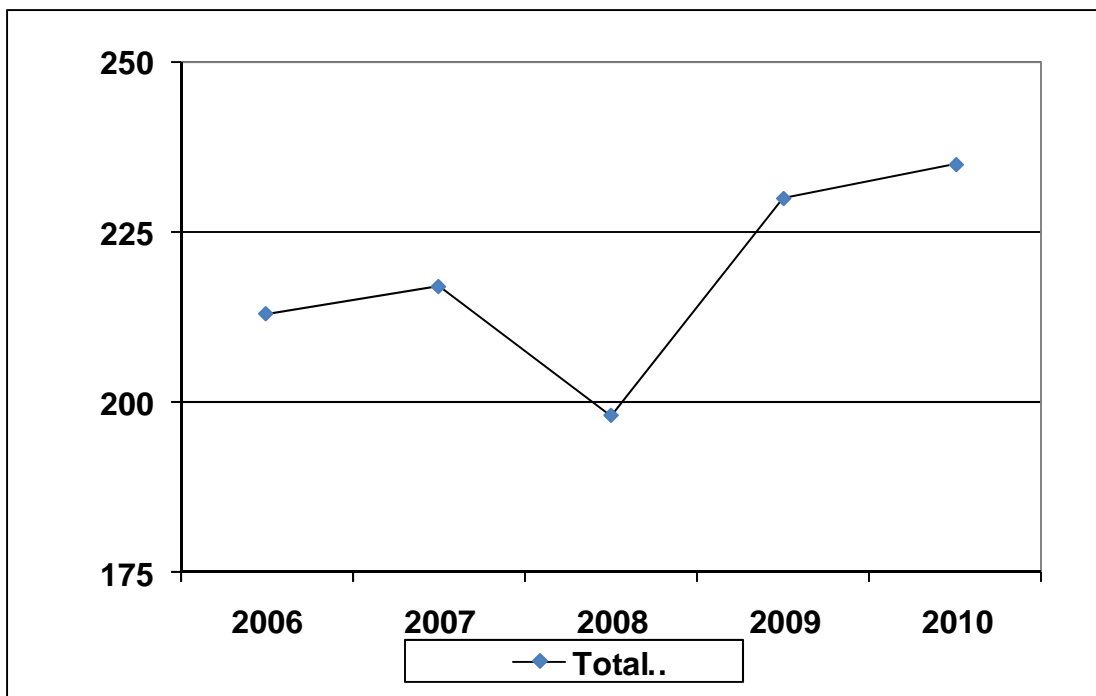


Internal Medicine Faculty 2010 Publication Trends



Publication Type	2006	2007	2008	2009	2010
Manuscripts/ Editorials /Reviews	210	205	185	225	215
Book Chapters/ Books/ Book Edits	1	3	1	5	14
Electronic Media	2	9	0	1	6
Yearly Totals	213	217	198	231	235

YEARLY PUBLICATION TRENDS



Internal Medicine Faculty

2010 Division Trends in Research Activity

Division Publications	2006	2007	2008	2009	2010
Administration	3	2	4	3	3
Cardiology	26	5	11	15	18
Diabetes, Endo, Metabolism	13	8	4	11	21
Gastroenterology & Hepatology	20	26	12	35	21
General Medicine	5	4	6	12	9
Geriatrics & Gerontology	12	8	6	7	10
Infectious Diseases	30	32	39	32	29
Nephrology	1	4	4	2	4
Oncology/Hematology	52	70	52	60	50
Pulmonary & Critical Care	36	33	35	30	33
Rheumatology & Immunology	14	23	24	24	37

Division Grant & Contract	2006	2007	2008	2009	2010
Administration	0	0	4	0	1
Cardiology	11	10	12	9	12
Diabetes, Endo, Metabolism	23	22	15	10	12
Gastroenterology & Hepatology	18	26	29	19	13
General Medicine	0	1	2	0	1
Geriatrics & Gerontology	4	3	3	4	2
Infectious Diseases	32	29	39	15	17
Nephrology	4	6	6	2	1
Oncology & Hematology	51	85	90	25	26
Pulmonary & Critical Care	32	38	44	23	22
Rheumatology & Immunology	15	21	20	13	14