

• AltEn (approx)

The Groundwater Atlas of Saunders County, Nebraska

Resource Atlas No. 9 – Figure 1

Dana P. Divine

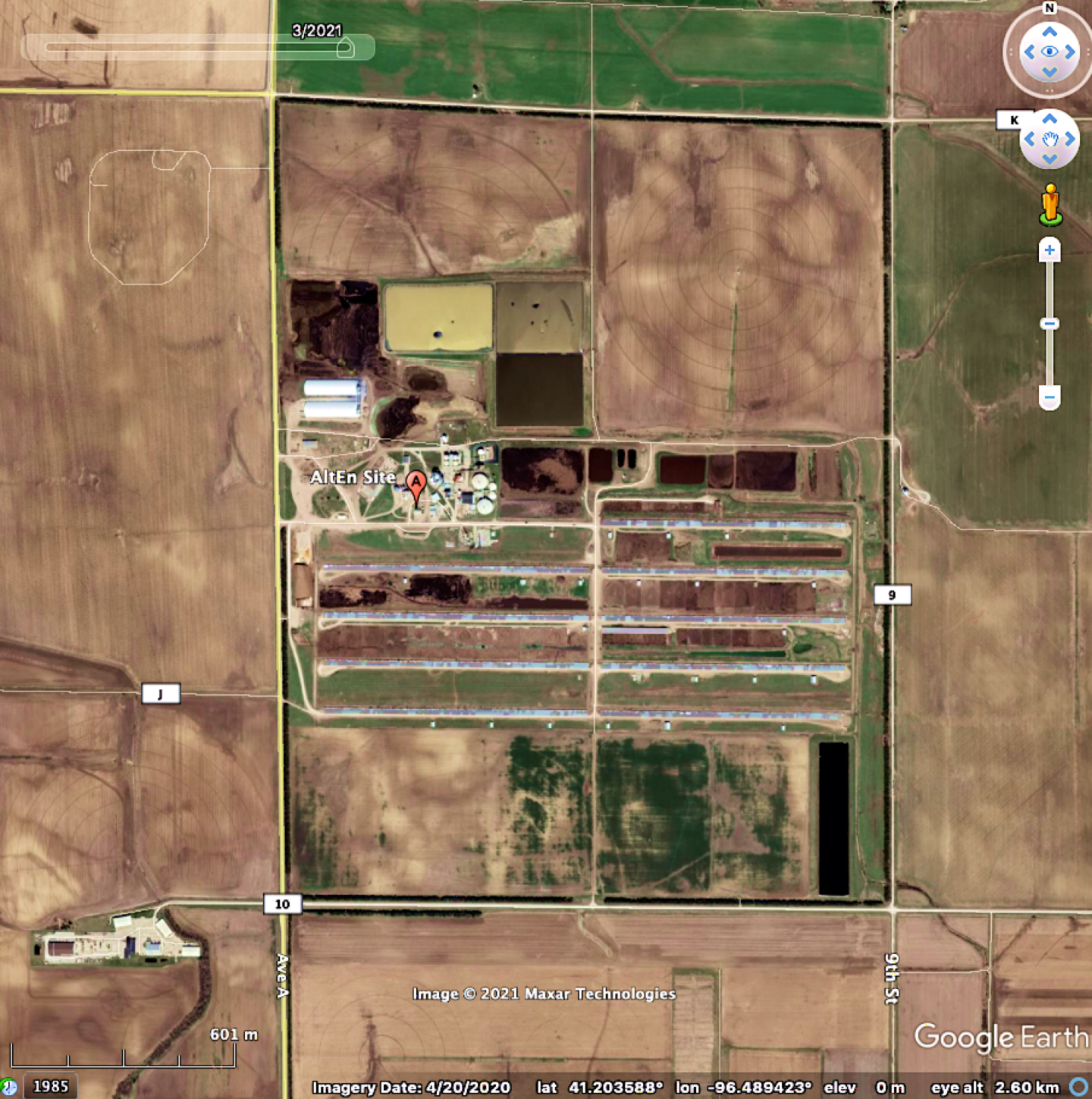
Cartography by Leslie M. Howard

Nebraska Conservation & Survey Div.

Figure 1. Geographic setting. The Platte River forms the north and east boundaries of Saunders County. The Todd Valley, an abandoned valley of the Platte River, cuts diagonally across the eastern part of the county. The rolling hills consist mostly of glacial till and loess dissected by numerous creeks.



AltEn Property and surroundings
Schalles Lab, Biology Department, Creighton University
(Imagery – Google Earth, April 20, 2020)



AltEn Property, 1332 County Road 10, Mead, NE 68041
Schalles Lab, Biology Department, Creighton University
(Imagery – Google Earth, April 20, 2020)