

An Assessment of the Oregon Flex Program

Keith J. Mueller, Ph.D.

Director

Nebraska Center for Rural Health Research

RUPRI* Center for Rural Health Policy Analysis

Presented to the Oregon Rural Health Conference

November 2, 2006

Newport, Oregon

*Rural Policy Research Institute

How are we doing?

- CAHs are performing well on financial indicators
- Performance of CAHs has improved overall, and most dramatically in years following conversion

Figure 5
Operating Margin by Conversion Year

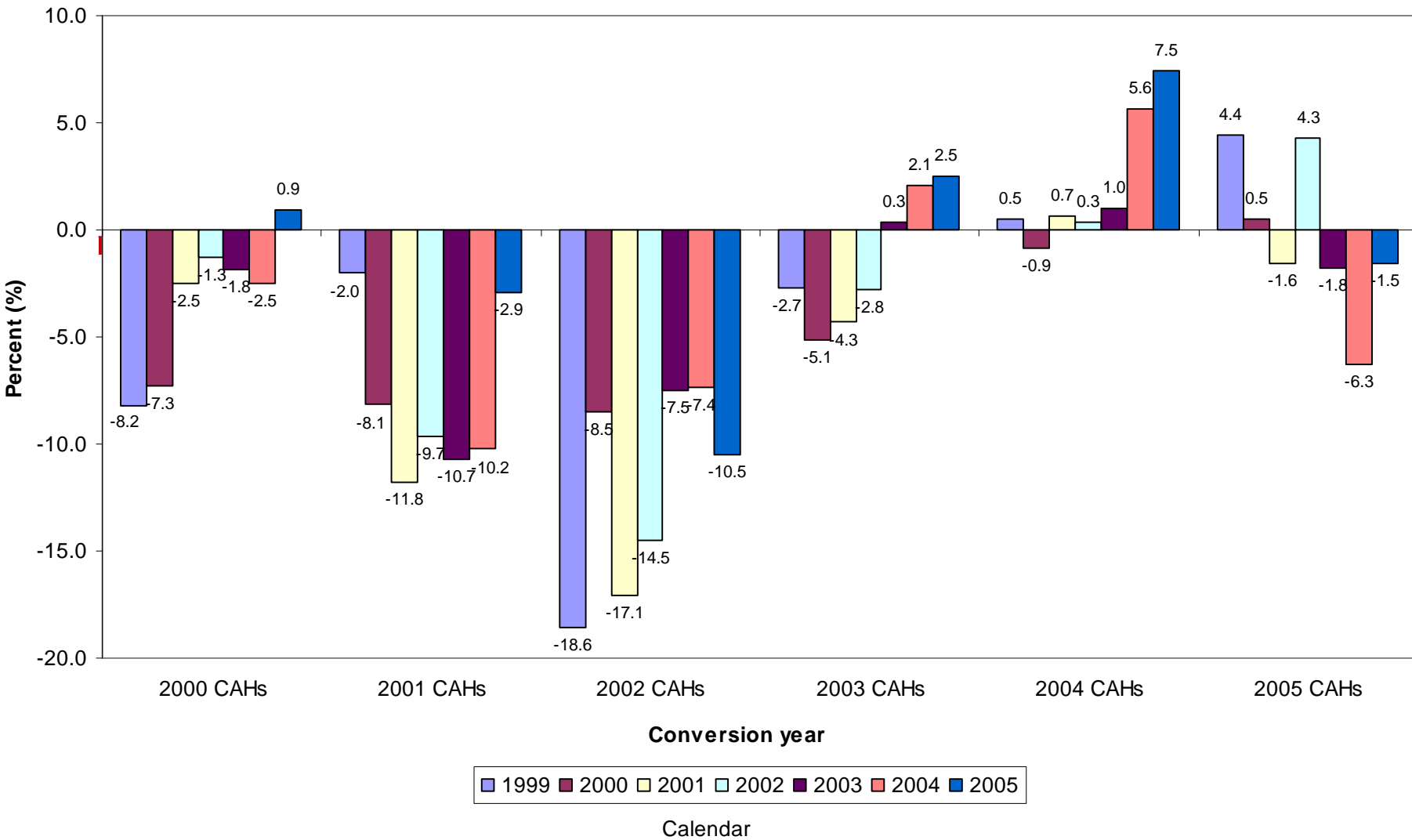


Figure 6. Total Margin by Conversion Year

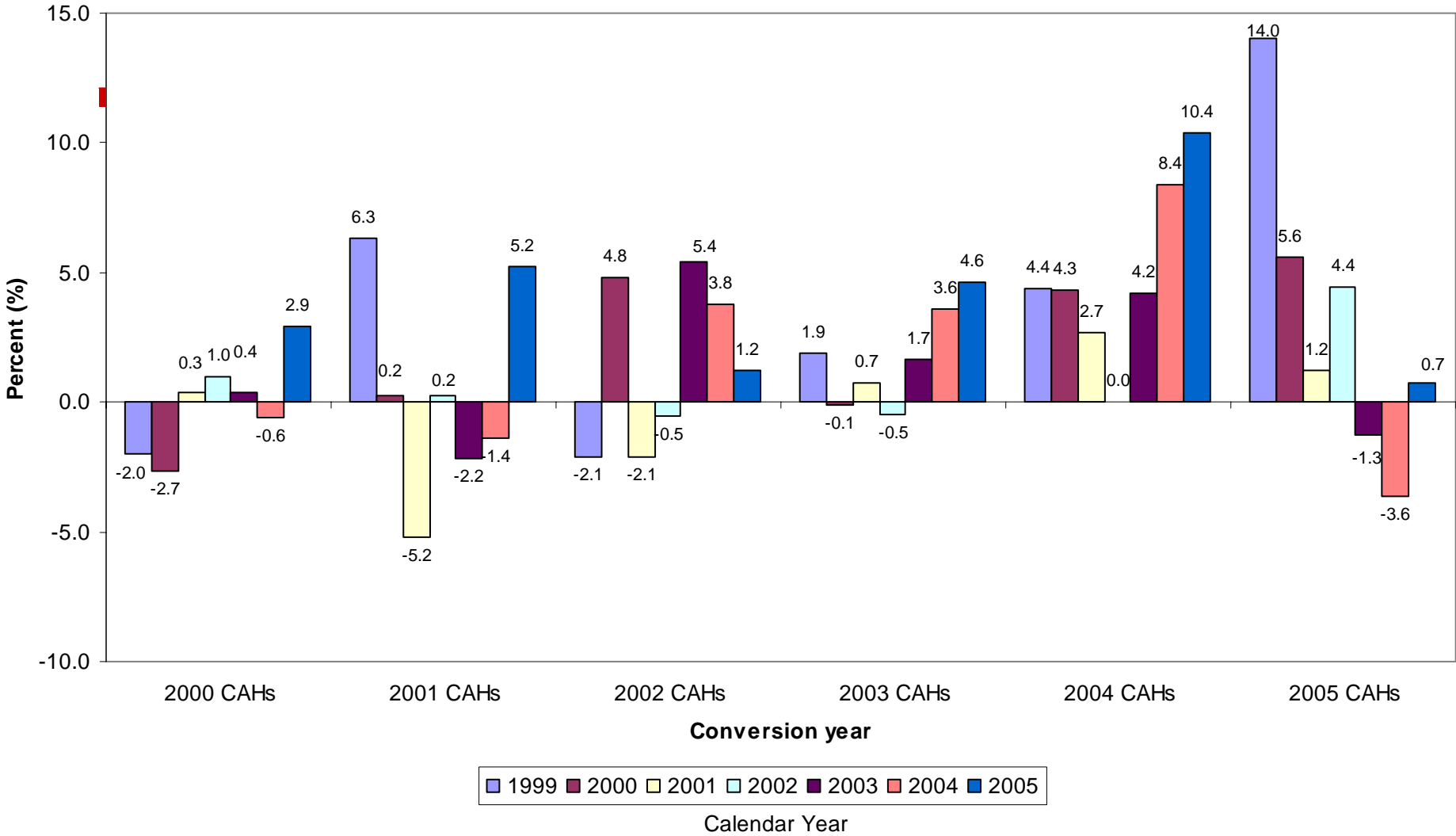
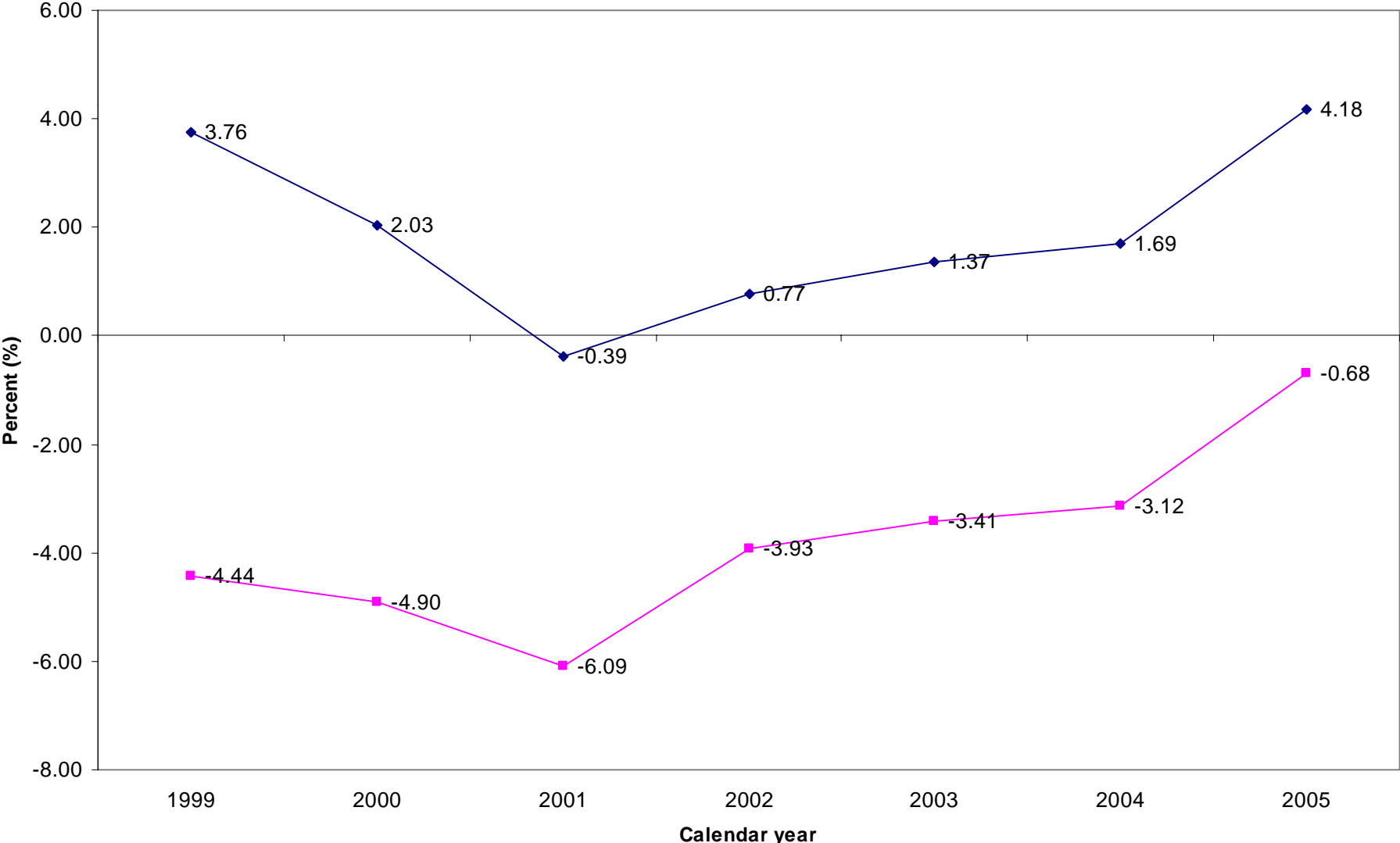


Figure 7
Total Margin and Operating Margin, 1999 to 2005



How about the program?

- Achieved specific objectives
- Potential for consideration of other activities
- With input from CAHs and communities

What are the impacts?

- Aligning services with community needs
- Success using the Community Health Improvement Partnership
- Opportunities for enhancing impact through collaborations among stakeholders

What is the role of networks?

- ❑ Oregon's context: health care systems
- ❑ Developing networks where systems are not present
- ❑ The Rural Health Quality Network

Are we “in tune” with quality improvement emphasis and use of HIT?

- ❑ Pace of HIT adoption varies – in keeping with national trends
- ❑ QI to achieve scores
- ❑ Could re-examine QI efforts
- ❑ Opportunities for further collaborative activities

Ok, how do move forward?

- Incorporate input from CAHs
- Continue the growth in scope of work of the RHQN
- Provide training opportunities, including the balanced scorecard
- Disseminate best practices and materials related to quality improvement

For more information, visit
<http://www.unmc.edu/rural/>
Thank you!