

Connecting Research to Policy and Practice

Keith J. Mueller, Ph.D.

October 22, 2007

University of Nebraska Medical Center

Know The Research

- Reasons for expectations
- Hypotheses
- Methods
- Analysis
- Strength of findings



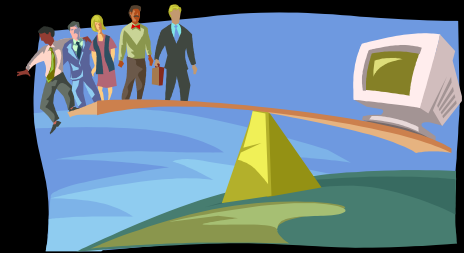
Know the Relevance of the Research

- What generated the research questions?
- What are the current issues in policy/practice?
- What is the external validity of the research?
- Who are the stakeholders with interest in the research?



Limitations of the Data and Analysis

- Important to recognize
- Think of both research and policy/practice limitations
- Weigh the advantage of using “best available” research vs. not having research
- Recognizing “real life” decisions will be made



Communicating research results

- Understand the target audience
- Most critical information: implications for decisions they will be making
- Separating research from “noise” – integrity is critical
- Timing is everything in policy making – may mean repeated communication, certainly means early communication when particularly relevant



Examples from health services research

- Quality improvement
- Area variations: real, but what is the cause?
- Claims data used to set benchmarks: clinically meaningful?
- Organizing delivery systems
- Systems development
- Telecommunications as means to end
- Pricing/expenditures

Examples from health services research

- Does competition among health plans work?
- Pay for performance
- Physician payment or physician income?
- Framing discussions
- Pharmacy research
- Medicare policy

What is available for collaboration with health services research and administration?

- Data
- Archival data
- Data collection
- Analysis
- Using methods developed in health services research, such as analysis of claims data



What is available for collaboration with health services research and administration?

- Economic evaluation
- Medical geography (GIS)
- Qualitative methods
- Finance
- Implications
- Policy
- practice
- Dissemination



How we are organized

- Nebraska Center for Rural Health Research
- RUPRI Center for Rural Health Policy Analysis
- Public health data and analysis/presentation of information

Thank you!

- www.unmc.edu/publichealth/healthservices/
- <http://www.unmc.edu/rural/>
- <http://www.rupri.org/>

