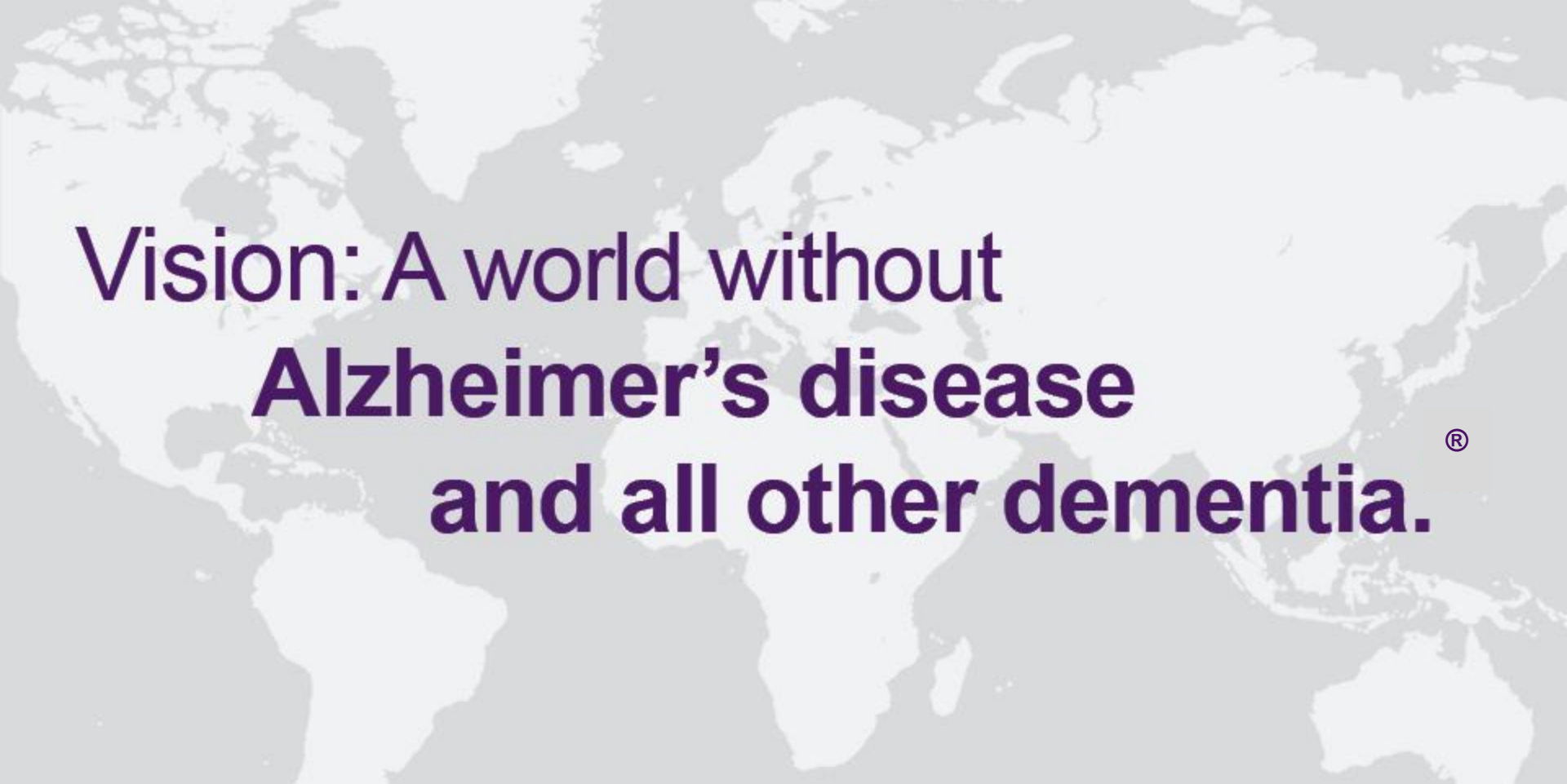




Alzheimer's Association Nebraska Chapter

December 2, 2021

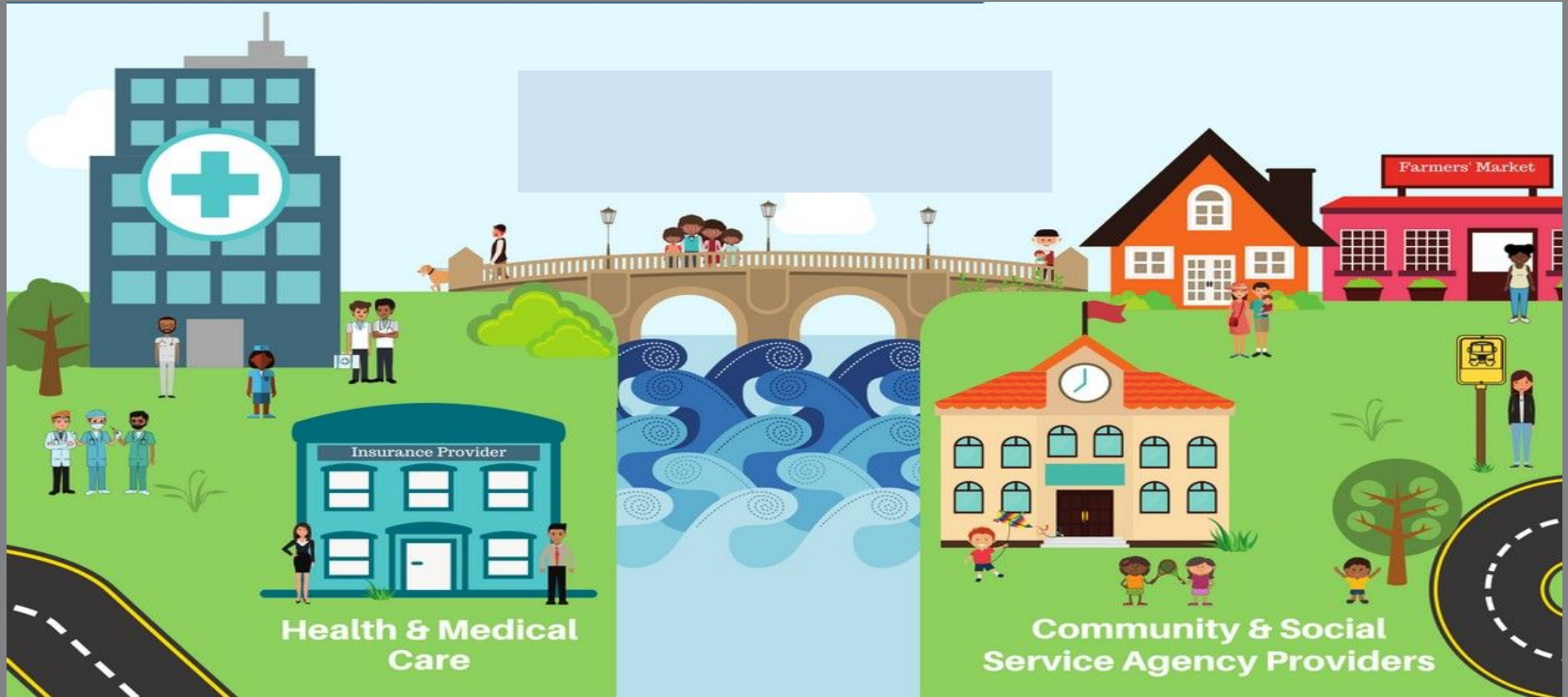


**Vision: A world without
Alzheimer's disease
and all other dementia.®**

Our Time Today...

- Overview of programs and services enhanced through the GWEP
- Further understanding implementation of CPT Codes in diagnosing and caring for those with cognitive disorders

Partnering Together



**It starts with
you!**



COGNITIVE IMPAIRMENT CARE PLANNING TOOLKIT



alzheimer's  association®

alz.org/careplanning | 800.272.3900

alzheimer's  association®

Care Planning for People with Cognitive Impairment

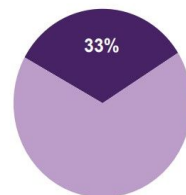
Most people who have been diagnosed with Alzheimer's disease are not aware of their diagnosis.

- Only about half of those with Alzheimer's have been diagnosed.
- Among those seniors who have been diagnosed with Alzheimer's, only 33 percent are aware they have the disease.
- Even when including caregivers, 45 percent—less than half—of those diagnosed with Alzheimer's or their caregivers are aware of their diagnosis. For other dementias, the disclosure rate is even lower—only 27 percent.
- Comparatively, 90 percent or more of those diagnosed with cancer or cardiovascular disease, or their caregivers, are aware of the diagnosis

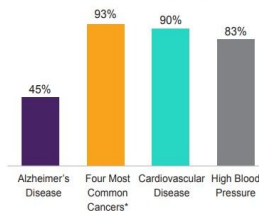
Lack of disclosure is sometimes a result of physicians not having the time or resources to do care planning.

- Following a diagnosis of Alzheimer's disease, individuals and their caregivers need information about the diagnosis and available support services.
- Studies have found one of the reasons physicians do not diagnose Alzheimer's in the first place—or do not disclose a diagnosis once it is made—is because of the lack of time and resources to provide this information and support to patients and caregivers.

Percent of Seniors Diagnosed with Alzheimer's Disease Who Are Aware of the Diagnosis



Percent of Seniors Diagnosed with Condition, or Their Caregivers, Who Are Aware of the Diagnosis

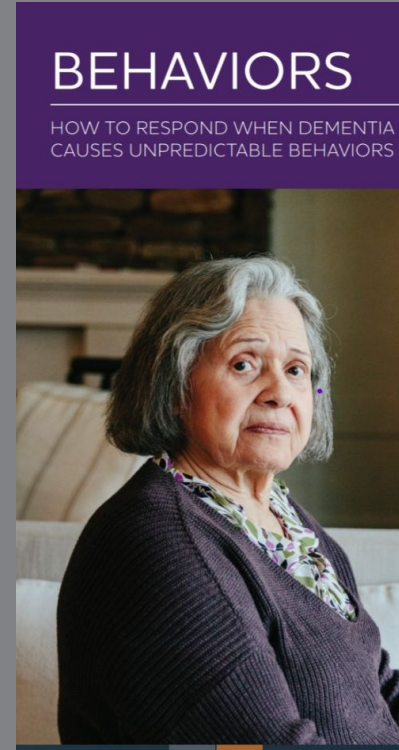


*Breast, Lung, Prostate, and Colorectal

What's Next....After Diagnosis

Information and Education

THINK- PATIENT/FAMILY READINESS!



Meet Your Coordinators

PCMH Social Workers

Clinic Champions:

Jamie Rudd Jill Pfeil Julie Swain Brandy Hertzig

Carlie Lesley Ashley Shacklett Judy Jesz

Cheryl Walter Vanessa Warneking

-

What if They Need More?

The 24/7 Helpline

- Available around the clock, 365 days a year.
- Helpline specialists and master's-level clinicians offer confidential support and information.
- Bilingual staff and translation service in 200+ languages
- Live chat available.
- TTY Service 866.403.3073



24/7 Helpline

800.272.3900

alzheimer's  association®



Live Chat

Ambulatory Referral to Alzheimer's Association

PCMH providers can place an External Referral Order to the Alzheimer's Association for their patient who would benefit from this assistance.

Place the Referral Order

Search for the **Ambulatory referral to Alzheimer's Association** Order

1. Make sure the Order Class remains **External**.
2. Obtain patient's consent, then answer the following in the Order Composer:
 - Caregiver's Name
 - Caregiver phone number
 - Type of Dementia
 - Preferred Language
3. A printed copy of the referral order will generate automatically upon signing.
4. FAX the referral to the AANC number noted on the printed referral form.

Name	Prof List	Type	Pix Code
Ambulatory referral to Alzheimer's Association	NMC A...	Refer...	RFF275

Ambulatory referral to Alzheimer's Association Accept Cancel

Class: External Referral Internal Referral **External Referral** 1

Referral: To prov spec:

To provider:

To loc/pos:

Reason:

Priority:

Comments: ← This will appear on the printed referral form

Caregiver's Name
 Caregiver phone number
 Type of Dementia: 2

Preferred Language:

Status: Normal Standing **Future**

Expected Date: Approx.

Expires:

What Prints in the AVS:

Thank you for coming in to see us today. I have made a referral to the Alzheimer's Association Nebraska Chapter. A Chapter team member will be contacting you to provide information about the care and support they can offer you and your loved one.

What are the services offered by the Alzheimer's Association?

- *A 24/7 Helpline* (800 272-3900) offers free support anytime patients or caregivers need it. Free translation services accommodating more than 200 languages.
- *Care Consultation:* Disease education, information on programs available locally, help with financial, legal, housing, and care decisions and crisis assistance.
- *Safety Services:* Tips for those affected by dementia including home safety, medication safety, emergency planning and driving considerations.
- *Dementia-related Education*, available at various sites and times.
- *Support Groups:* Build a support system and connect with others through groups in-person in your community, over the phone and on-line
- *Brain Health Awareness:* Access the latest research in how to reduce the risk of memory problems through lifestyle changes.
- *Clinical Trials:* Free matching to clinical trials based on diagnosis, stage of the disease and location.



Early Stage Support Group



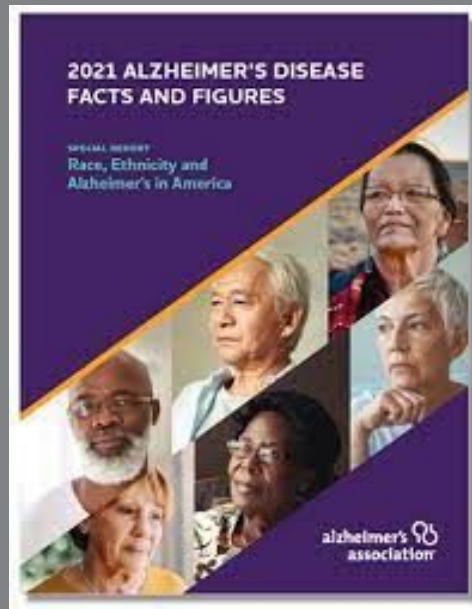
**BLACK / AFRICAN
AMERICANS** are about

2x

and **HISPANIC / LATINOS**
are about

1.5x

more like than **WHITES** to
have Alzheimer's or other
dementias...



...YET they are less
likely to receive a
diagnosis

Commitment to Partnership

