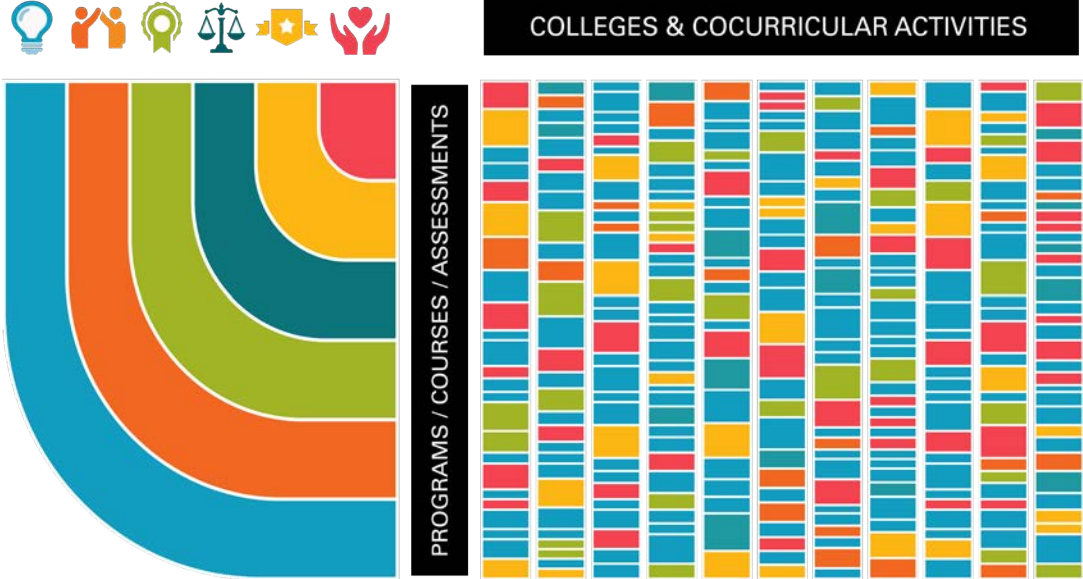


AMPLIFYING INSTITUTIONAL VALUES THROUGH ASSESSMENT



“ITEACH” Institutional Learning Objectives

- INNOVATION
- TEAMWORK
- EXCELLENCE
- ACCOUNTABILITY
- COURAGE
- HEALING

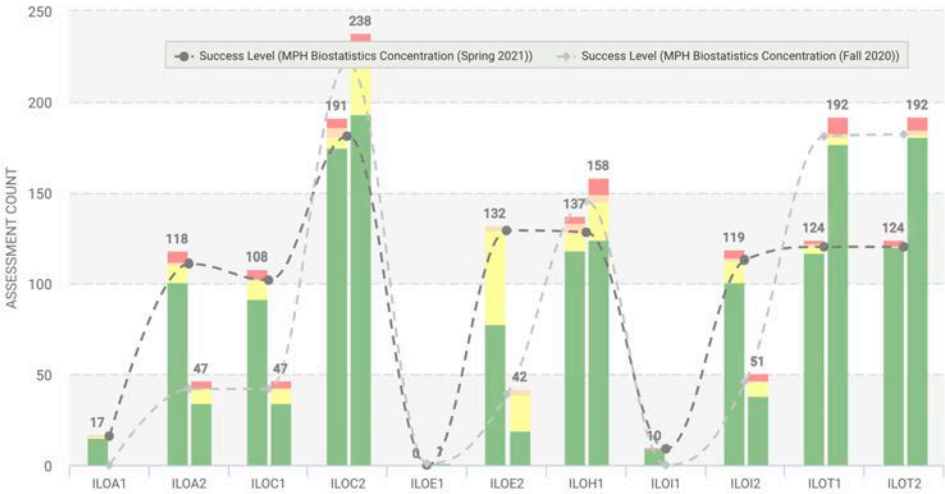


- “ITEACH” institutional student learning objectives (ITEACH ILO) were derived from the institution’s existing mission and values.
- Measurable performance indicators (PIs) were also developed for each ITEACH ILO.
- ITEACH ILO Rubric created and made available to faculty needing an assessment tool.

Colleges were asked to map a portion of their curriculum to the new ITEACH ILOs. The types of curricular events that were mapped include: program-level learning objectives, course-level learning objectives, assignments and assessments.

Cocurricular learning events were also mapped to the new ITEACH ILOs. A pilot assessment program (2019-2021) measured ITEACH ILO competencies demonstrated in various community and student engagement activities (i.e., volunteering, interdisciplinary learning activities, leadership opportunities).

ITEACH ILO Competency in Biostatistics Concentration



ITEACH ILO Competency in Cocurricular Learning

