

## Research Goals

- Develop a world class center for hemoglobinopathies.
- Collaborate with others, locally and elsewhere to bring state of the art treatment to Nebraska.
- Develop improved neurologic decline and silent cerebral infarction screening and detection in adolescents with sickle cell.
- Develop improved newborn hemoglobinopathy screening methods for Nebraska in light of our changing demographics and evolving hemoglobinopathy incidence.

## Collaborative Needs

### Types of interdisciplinary collaborators I need:

- Neuropsychology
- Public Health

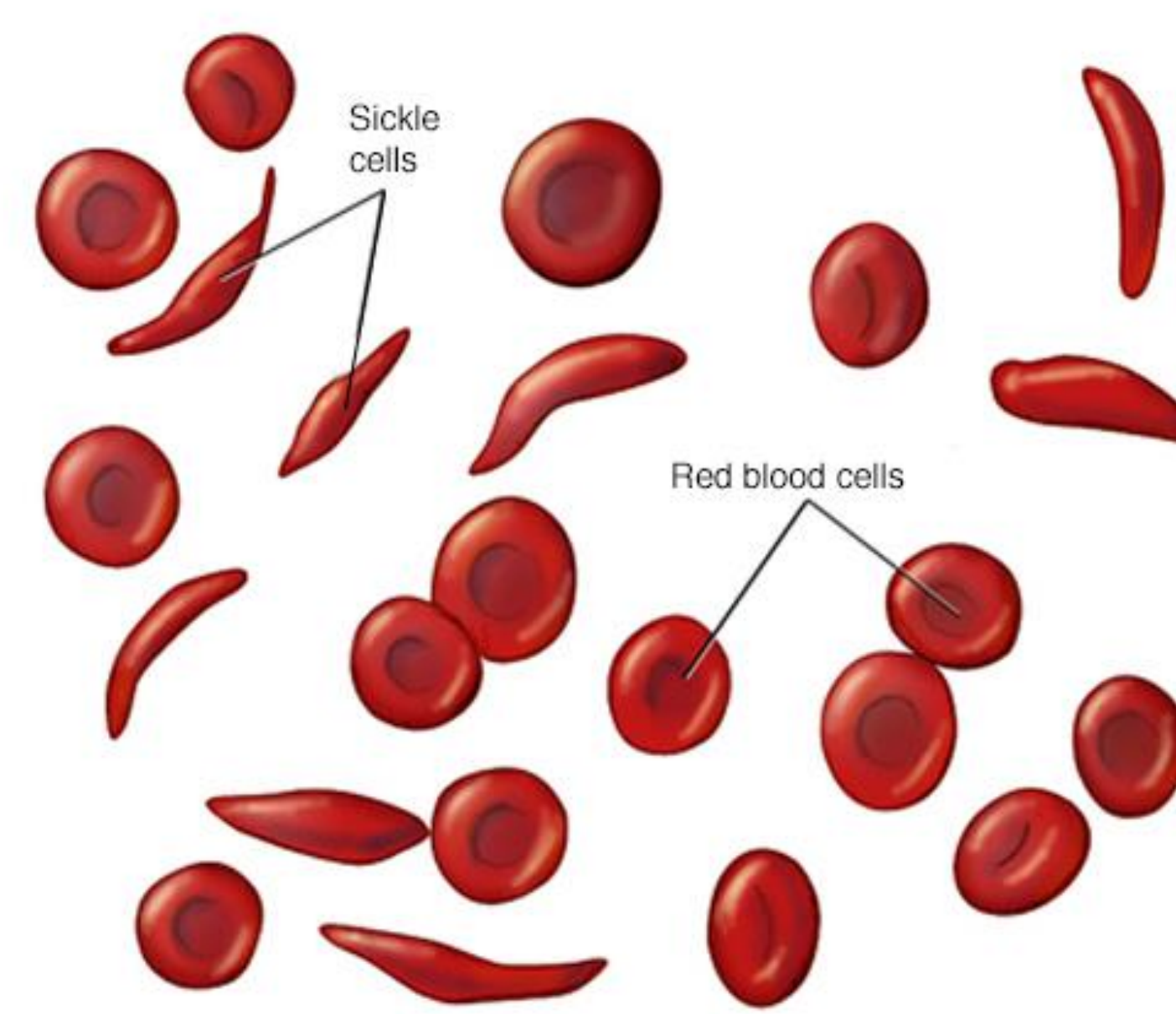
### Specific needs I am looking for:

1. Screening assistance to develop efficient process of screening and getting kids into services once detected.
2. Tools for non educators to identify at risk kids.

## My Area of Study

### What are your concepts?

Sickle cell disease  
Continuing Medical Education



### What are your population(s)

Pediatric hematology with emphasis on non malignant hematology



### Objectives:

Interested in screening for neurological decline in children with sickle cell

Developing a methodology that would be cost effective

## Funding

### Current:

- Member of HRSA funded regional sickle cell collaborative (Missouri, Kansas, Iowa, and Nebraska)
- Hemoglobinopathy teleconsulting with Peoples Health Center and Children's Hospital and Medical Center



### Contact:

James Harper  
[jharper@unmc.edu](mailto:jharper@unmc.edu)  
402-559-7257

