

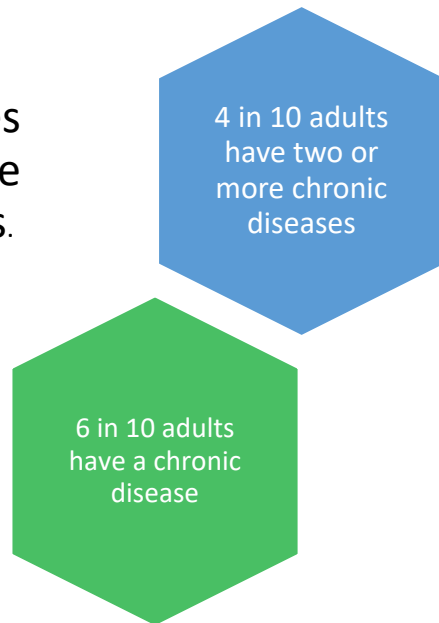


Center for Patient, Family, & Community **Engagement** in Chronic **Care** Management (**CENTRIC**)

Building infrastructure for research to help Nebraskans learn to live with their chronic conditions, to:

- stay healthy • stay in their homes longer • reduce health care costs.

Chronic illnesses and conditions are a growing crisis.



- We need to **engage** and rely more on patients, family caregivers and community partners to help manage these conditions.
- Multidisciplinary teams will **implement** strategies to promote self-management to maintain or improve patient’s health and prevent a decline in health.
- Self-management **support programs** are one means of improving patient outcomes and reducing hospital readmissions and emergency room visits.

CENTER GOALS

Expand research resources to plan, promote, and support self-management research and manage chronic health care conditions.	Expand the number of interdisciplinary, externally funded studies focused on self-management support for chronic illnesses, or those at high risk for chronic conditions.	Develop scientists with expertise in translational methods studying self-management for chronic illnesses.	Accelerate the use of technologies for studies focused on patient, family, and community engagement in self-management.	Provide the research infrastructure and a home for PostDocs.	Plan for and develop sustainability of the center.
---	---	--	---	--	--



CENTER COMMITTEES

Professional Development

- Hosts professional workshops and seminars to support scientist development in chronic care management, advance research endeavors, and open collaboration with campus leaders to develop research initiatives.
- Conducts needs assessments of CENTRIC membership and responds to new and innovative topics to plan educational programs.
- Sponsors and co-sponsors educational activities.
- Facilitate collaborations among interdisciplinary Center scientists with common research interests and allow new and early investigators to test feasibility of studies and pilot interventions needed before external funding support.

Technology

- Established a data repository from CENTRIC funded studies.
- Collaborates with other campus centers and committees to promote and support use of technologies for chronic care management.

Mentorship Steering

- Guides new and developing faculty in clinical and translational research in the College of Nursing.
- Lead faculty development workshops on mentoring PhD students and Post-Doctoral Fellows.
- Committee leadership collaborates with UNMC-led efforts to promote and advance mentoring across the entire campus.

Post-Docs

- Reviews and evaluates applications for the Post-Doctoral Research Associate position for scholarly activity, achievement, diverse experiences, and fit with UNMC resources and potential mentors.
- Goal is to mentor and support the growth of individuals in the science of self-management of chronic conditions and for a successful scientific career.

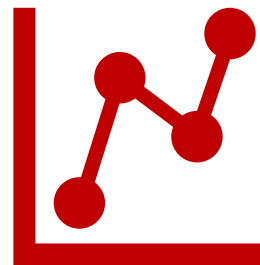
Accomplishments

Pilot Grants led to R01 funding

Just in Time Accelerator (JITA) led to R01 funding

Received external foundation grant funding from the **Hearst Foundation (\$300k during the past 10 years) to enhance research in the areas of self-management intervention of multiple chronic conditions and the design or use of technologies in monitoring symptom self-management.**

NU Collaborative Team Seed Grant for \$150K with UNO led to progress on the development of a self-management application platform.



Current funding priorities for **CENTRIC** focus on research covering multiple chronic conditions including **Cancer, Heart Failure, Diabetes, Cardiovascular Disease, Asthma, Arthritis, Obesity, Hypertension, Obstructive Sleep Apnea and Mental Health.**



Robin Lally – CENTRIC Director

Tonya Cejka – CENTRIC Project Coordinator

<https://www.unmc.edu/centric/>