

PRECISION CARE IN ONCOLOGY & HEMATOLOGY EMET TRACK

Bhavina Sharma MD MPH



**University of Nebraska
Medical Center™**

A microscopic view of several cancer cells, appearing as irregular, textured spheres with a reddish-pink hue, set against a dark purple background. The cells are scattered across the frame, with one cell in the center being more prominent and brightly lit.

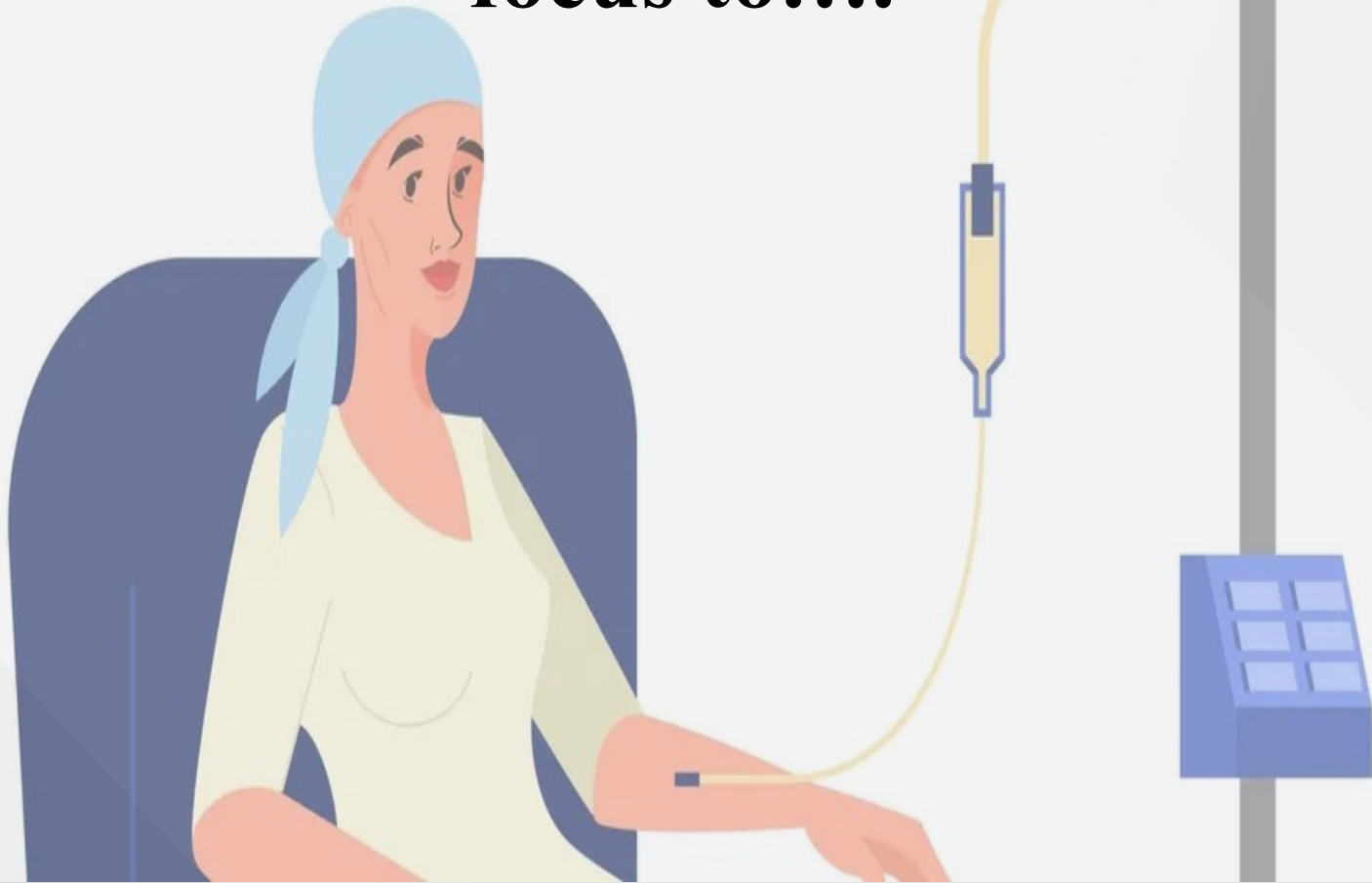
**1.7 million people are
diagnosed with cancer each
year in the United States.**

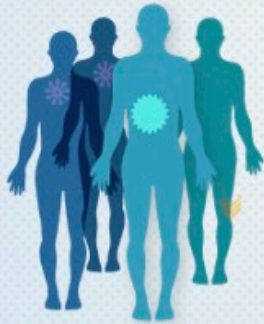
**Cancer is the second leading
cause of death in the US—
600,000 people die from cancer
each year.**



Cancer-related death rates have been falling in the recent years due to advancement in oncology care

Instead of using generalized cytotoxic treatment such as chemotherapy, cancer-directed treatment has shifted focus to....

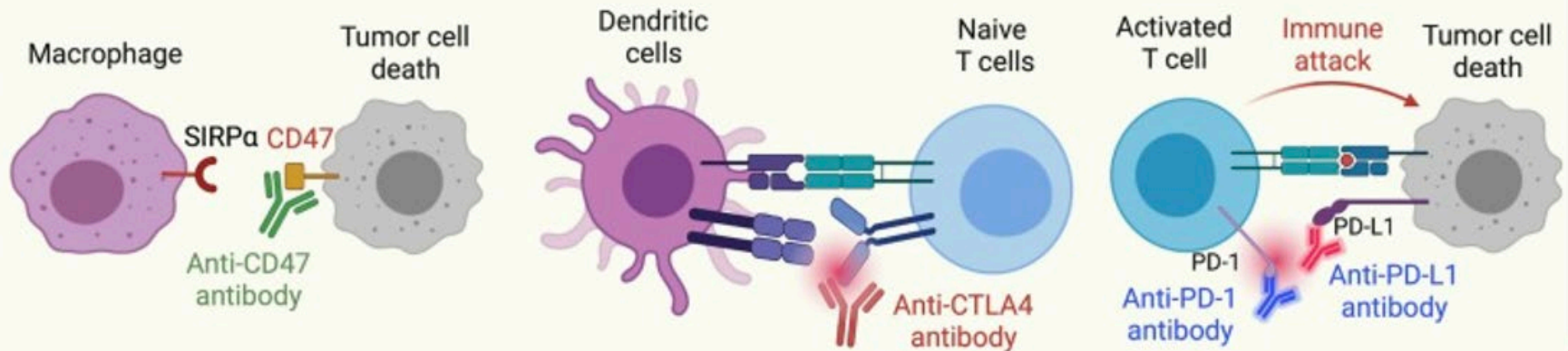




**Using cancer's own
unique genetic
landscape to identify
effective therapy**



Immune checkpoint blockade therapy



Harnessing patient's immune response by blocking the immunosuppressive interaction between the cancer cells and immune cells



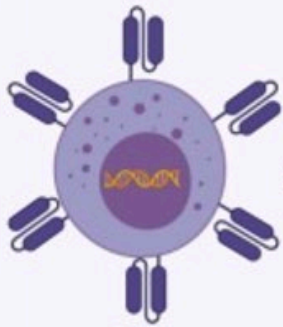
Cell-based therapies



CAR-T cell



CRISPR
engineered
T cell

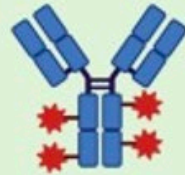


CAR-NK cell

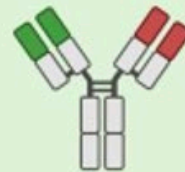
Other immunotherapies



Cancer vaccines



Antibody-drug
conjugate



Bispecific
antibody



Cytokines

**Designing immune
cells or proteins to
target specific
markers on the
cancer cells**



Using advance molecular techniques to guide cancer treatment and predict possible cancer recurrence



**Join us to learn more and be a part of
this exciting phase in cancer care**

UNIVERSITY OF
Nebraska
Medical Center

