



Nebraska Statewide Infectious Disease Updates

May 14, 2024



2024 Symposia Series

Symposia

This series will provide practical ideas and share valuable lessons learned from recent emergency responses, as well as insight into future hazards, all with the goal of improving whole community preparedness.

Topics will include:

- Business Continuity
- The role and capability of your local Hazmat Team
- Crisis Standards of Care
- ChemPack Program Review
- Coalition Chemical Annex Review
- Chemical Terrorism

Medical Response & Surge Exercise

On day two of the Symposia, the Center for Preparedness and Emergency Response Solutions (CPERS) will be facilitating the Medical Response & Surge Exercise (MRSE) for the local Healthcare Coalition. This will be a ½ day community-wide functional exercise designed to prepare Coalition members for a response to a chemical incident.

OMAHA
MARCH 19-20

NORFOLK
APRIL 3-4

KEARNEY
APRIL 10-11

BRIDGEPORT
MAY 6-7

NORTH PLATTE
MAY 8-9

BEATRICE
JUNE 10-11

JOIN US!

Register here:

Cost Symposium: \$60 (MRSE included)



CENTER FOR PREPAREDNESS AND
EMERGENCY RESPONSE SOLUTIONS

Mental Health and Suicide is not bound by county lines.

May 24-26, 2024

All proceeds go back to the great state of Nebraska through the Nebraska Game and Parks Commission for trail creation and maintenance.

Start the conversation about an issue that impacts every age, race, and gender in Nebraska.



HOPE IN EVERY STRIDE

Join Now!

tylervanderheidenmemorial.com

#Run4TJV

○ participating counties updated as of 5/8/2024

Caregiver Disaster Preparedness



ROSALYNN FOR
CARTER CAREGIVERS
INSTITUTE



Lezlie Poole, BA, CPS-WH, CPRP
Program Innovation Manager
Rosalynn Carter Institute for Caregivers

Disasters can strike when we least expect or are prepared for them. One of the best ways to decrease the stress and uncertainty of a disaster is to be a prepared caregiver. The Rosalynn Carter Institute (RCI) understands that being a caregiver means that your preparedness plan will need to be tailored to the unique needs of both you and the person you care for. During this webinar, RCI will walk caregivers through what items should be in their emergency kit, key points in creating your disaster preparedness plan, and simple ways to navigate a disaster while caring for someone.

Objectives:

- Define disaster preparedness and why it is important for caregivers.
- Discuss what is an emergency kit and what items should be in a prepared caregiver emergency kit.
- Illustrate how to better navigate disasters with those you care for



May 14, 2024
1-2PM, CST
Zoom

This webinar is designed for physicians, nurses, first responders, healthcare coalitions, public health, emergency managers, federal and state partners and other professionals throughout Region 7 (IA, KS, MO, and NE) and beyond.

Continuing education credits will be provided.



JOINTLY ACCREDITED PROVIDER
INTERNATIONAL CONTINUING EDUCATION

In support of improving patient care, University of Nebraska Medical Center is jointly accredited by the Accreditation Council for Continuing Medical Education (ACCME), the Accreditation Council for Pharmacy Education (ACPE), and the American Nurses Credentialing Center (ANCC), to provide continuing education for the healthcare team.



Register here

https://unmc.zoom.us/webinar/register/WN_pI1s31RYQkSX93LSBB0acQ#/registration

UPDATES ON THE OPIOID EPIDEMIC



KRYSTA BAACK
PHARM.D, BCPS, BCEMP



MAY 28, 2024

11AM-12PM, CST | ZOOM

The opioid epidemic is a problem that has plagued healthcare and law enforcement officials for many years now. However, it is also an ever-shifting problem as new drugs and issues arise. Join us as Krysta Baack, PharmD, BCPS, BCEMP discusses key issues of the opioid epidemic and resources to help combat it.

Objectives

Explain key aspects of the opioid epidemic including recent legislative changes.

Identify sign and symptoms of xylazine overdose.

Discuss state-specific resources for responding to the opioid epidemic.

This webinar is designed for physicians, nurses, first responders, healthcare coalitions, public health, emergency managers, federal and state partners and other professionals throughout Region 7 (IA, KS, MO, and NE) and beyond.



REGION VII
DISASTER HEALTH
RESPONSE ECOSYSTEM

Continuing education credits will be provided.



In support of improving patient care, University of Nebraska Medical Center is jointly accredited by the Accreditation Council for Continuing Medical Education (ACCME), the Accreditation Council for Pharmacy Education (ACPE), and the American Nurses Credentialing Center (ANCC), to provide continuing education for the healthcare team.



Register here

https://unmc.zoom.us/webinar/register/WN_ZZG-D3MsTWiXUvU5uFil7A#/registration



Nebraska Updates

TUESDAY 5/14/2024



-
- **International and National Updates – James Lawler**
 - **Public Health and Coalition Leader Updates**
 - **ICAP LTC & ALF Updates - Juan Teran**
 - **Other Updates - All**

INTERNATIONAL & NATIONAL UPDATES

COVID-19 (and Other) Update

May 14, 2024



Wastewater x Cases

Year-Over-Year

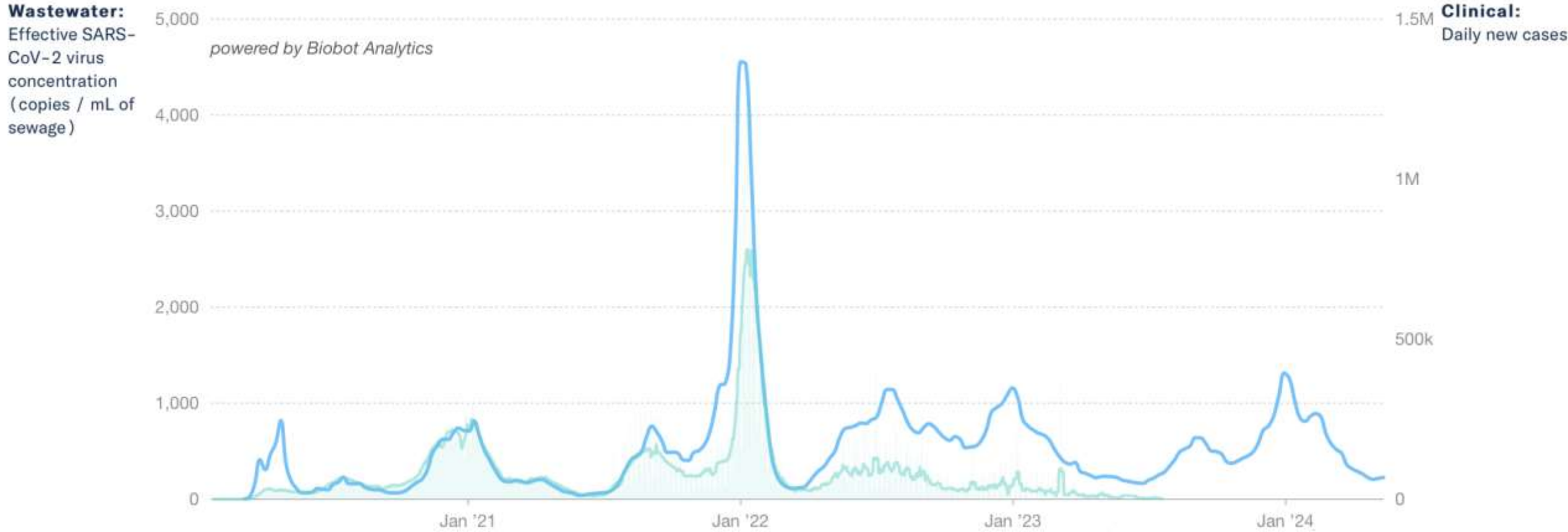
— Wastewater — Clinical cases daily avg Clinical daily cases

Show cases

Total results

Last 6 months

Last 6 weeks



Source: Wastewater data from Biobot Analytics; Clinical data from USAFacts



COVID-19 Wastewater Monitoring by Region

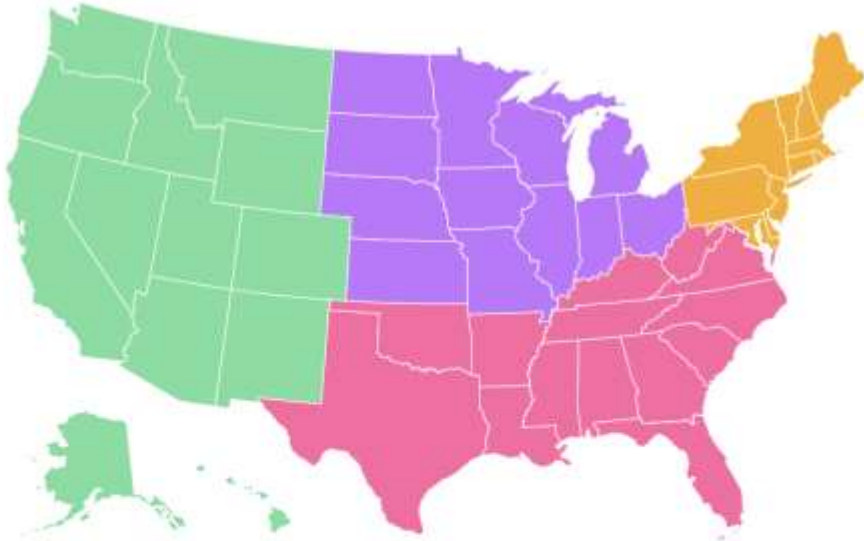
This chart depicts the varying levels of COVID-19 detected in wastewater samples across different regions of the U.S.

Data last updated May 13, 2024 from samples collected during the week of May 06, 2024.
Most recent data are subject to change.

Show nationwide average

Total results Last 6 months Last 6 weeks

Wastewater: Effective SARS-CoV-2 virus concentration (copies / mL of sewage)



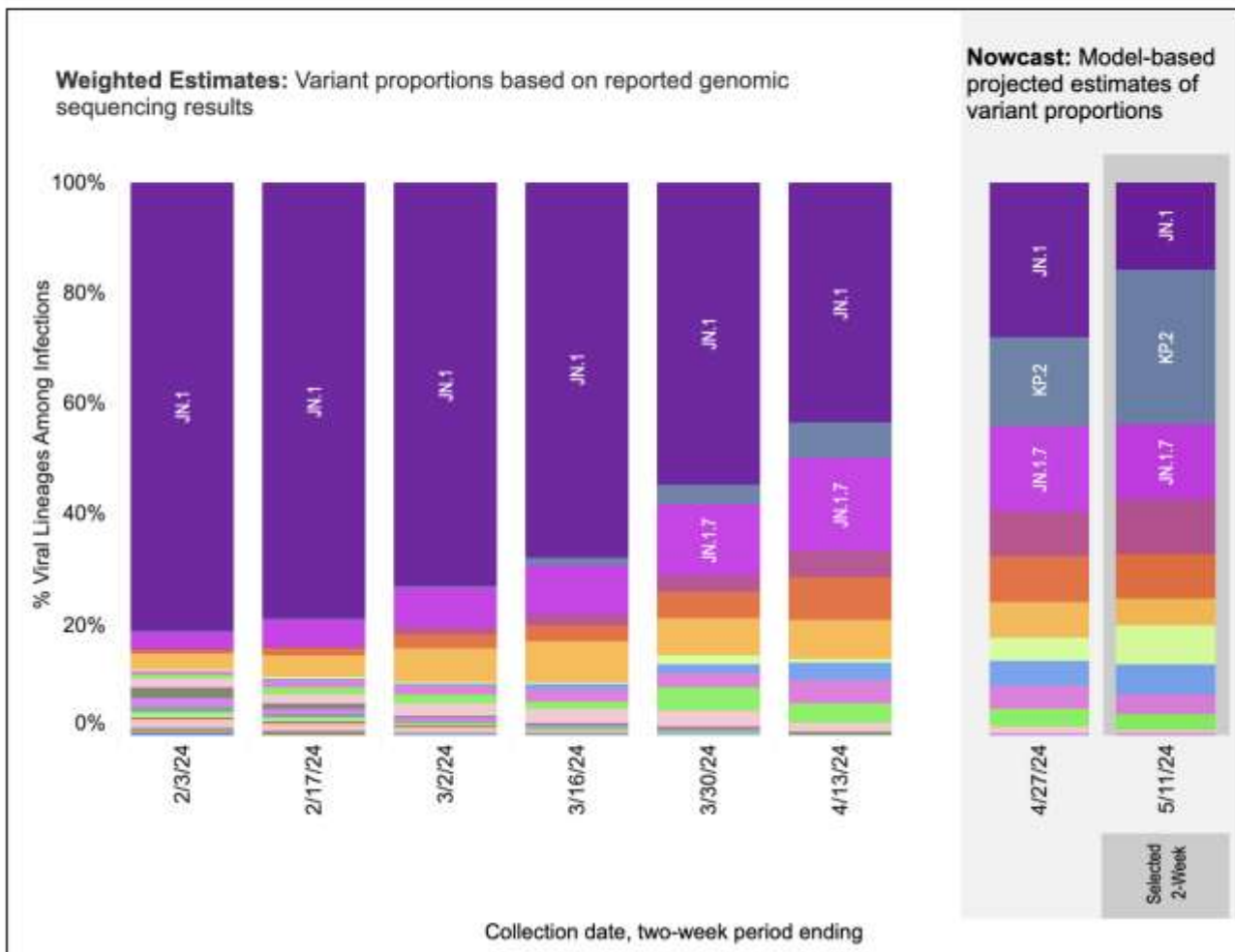
Source: Wastewater data from Biobot Analytics

COVID Data Tracker

Weighted and Nowcast Estimates in United States for 2-Week Periods in 1/21/2024 – 5/11/2024



Hover over (or tap in mobile) any lineage of interest to see the amount of uncertainty in that lineage's estimate.

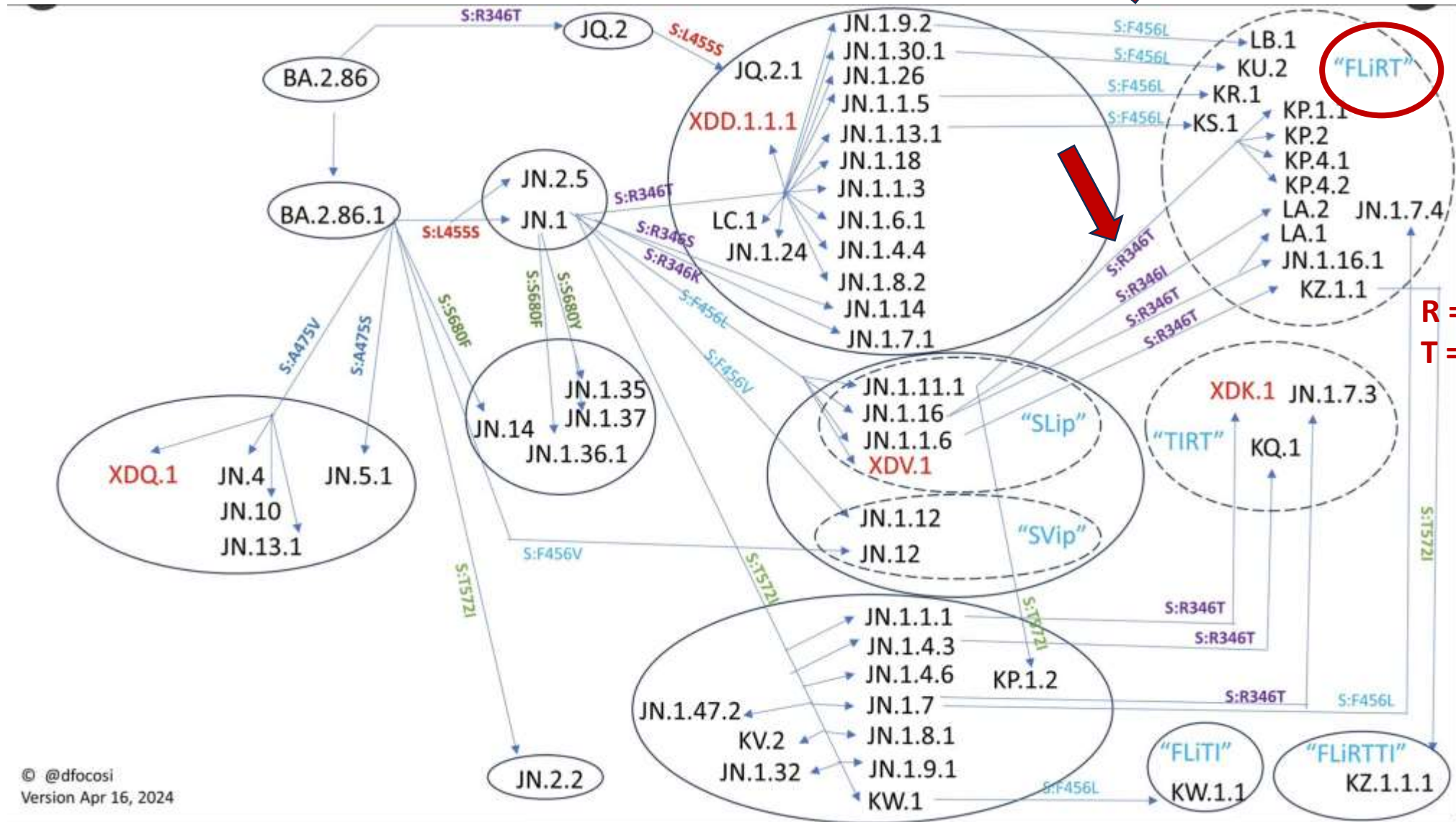


Nowcast Estimates in United States for 4/28/2024 – 5/11/2024

USA			
WHO label	Lineage #	%Total	95%PI
Omicron	KP.2	28.2%	20.5-37.3%
	JN.1	15.7%	13.3-18.5%
	JN.1.7	13.3%	10.5-16.8%
	JN.1.16	10.0%	7.1-13.8%
	JN.1.13.1	8.0%	5.2-11.9%
	KP.1.1	7.1%	4.4-11.1%
	JN.1.11.1	5.4%	3.0-9.3%
	JN.1.8.1	4.8%	3.7-6.1%
	KQ.1	3.8%	2.4-6.1%
	JN.1.18	2.6%	1.9-3.6%
	JN.1.13	0.1%	0.0-0.3%
	GE.1	0.0%	0.0-0.1%
	BA.2.86	0.0%	0.0-0.1%
	JG.3	0.0%	0.0-0.0%
	XBB	0.0%	0.0-0.0%
	EG.5	0.0%	0.0-0.0%

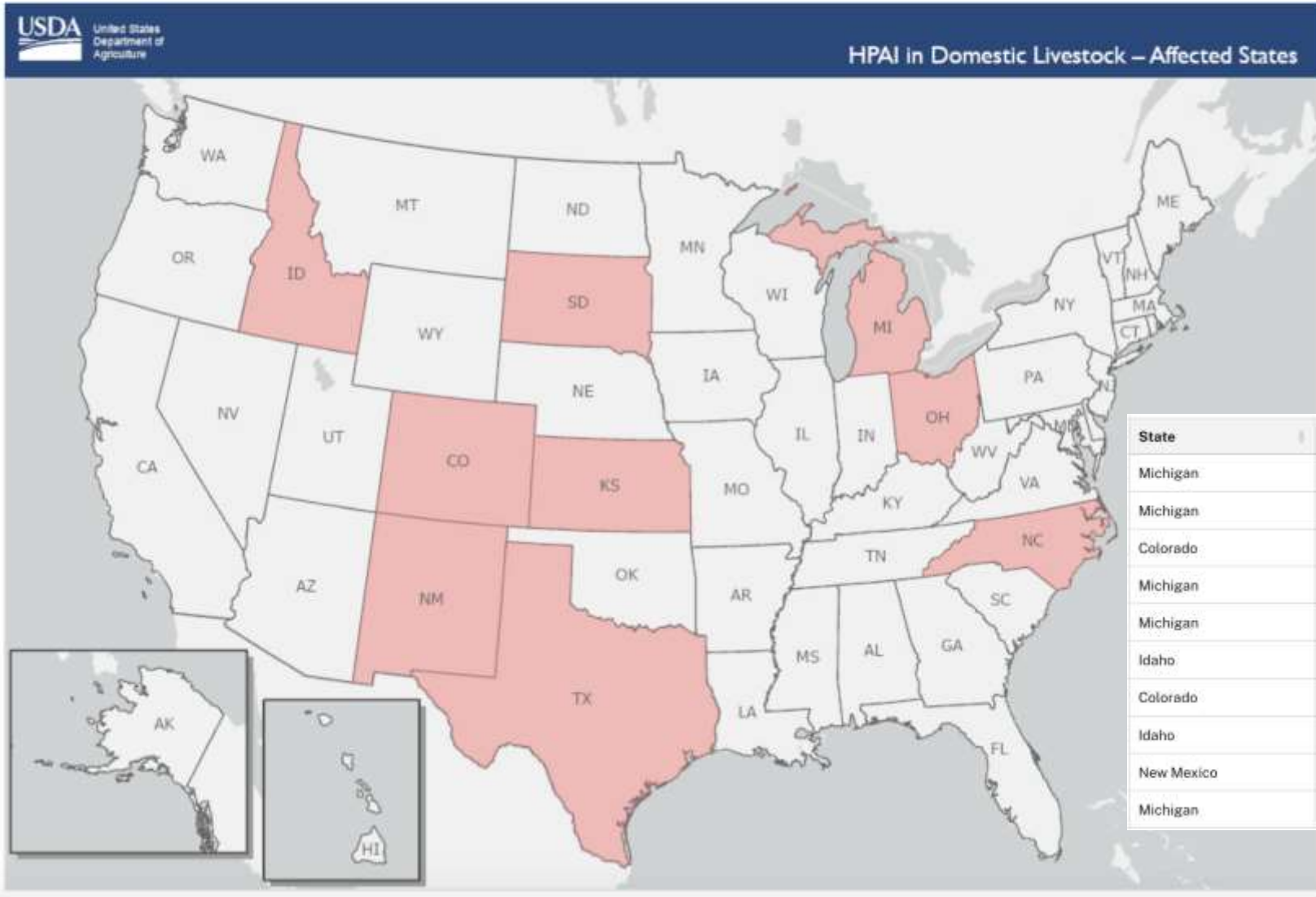


F = proline
L = leucine



Confirmed Cases of HPAI in Domestic Livestock

*Data updated weekdays by 4 pm ET.





 [Follow this preprint](#)

 [Previous](#)

[Next](#) 

Virome Sequencing Identifies H5N1 Avian Influenza in Wastewater from Nine Cities.

 Michael J Tisza, Blake Hanson, Justin Ryan Clark, Li Wang, Katelyn Payne, Matthew C Ross, Kristina D Mena, Anna Gitter, Sara Joan Javornik Cregeen, Juwan J Cormier, Vasanthi J Avadhanula, Austen L Terwilliger, John E Balliew,  Fuqing Wu, Janelle Rios, Jennifer Deegan, Pedro Piedra, Joseph F Petrosino, Eric Boerwinkle, Anthony W. Maresso

doi: <https://doi.org/10.1101/2024.05.10.24307179>

This article is a preprint and has not been certified by peer review [what does this mean?]. It reports new medical research that has yet to be evaluated and so should not be used to guide clinical practice.



Posted May 10, 2024.

 [Download PDF](#)

 [Email](#)

 [Print/Save Options](#)

 [Share](#)

[Author Declarations](#)

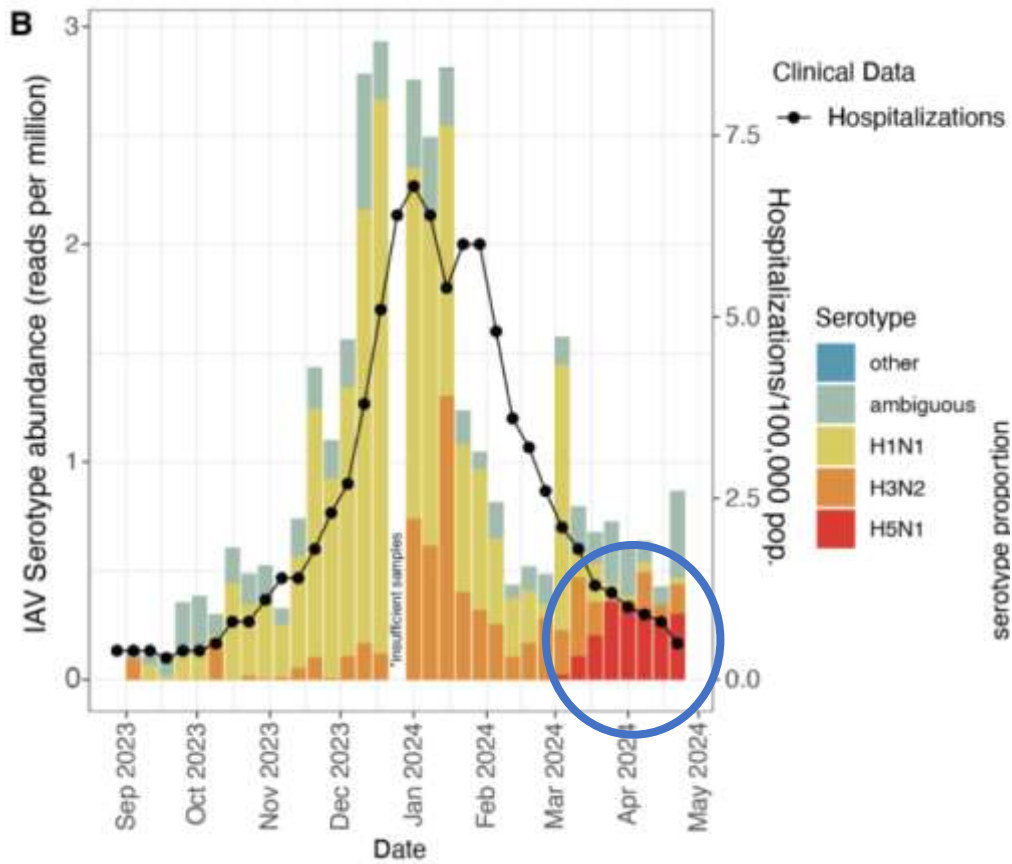
 [Citation Tools](#)

 [Data/Code](#)

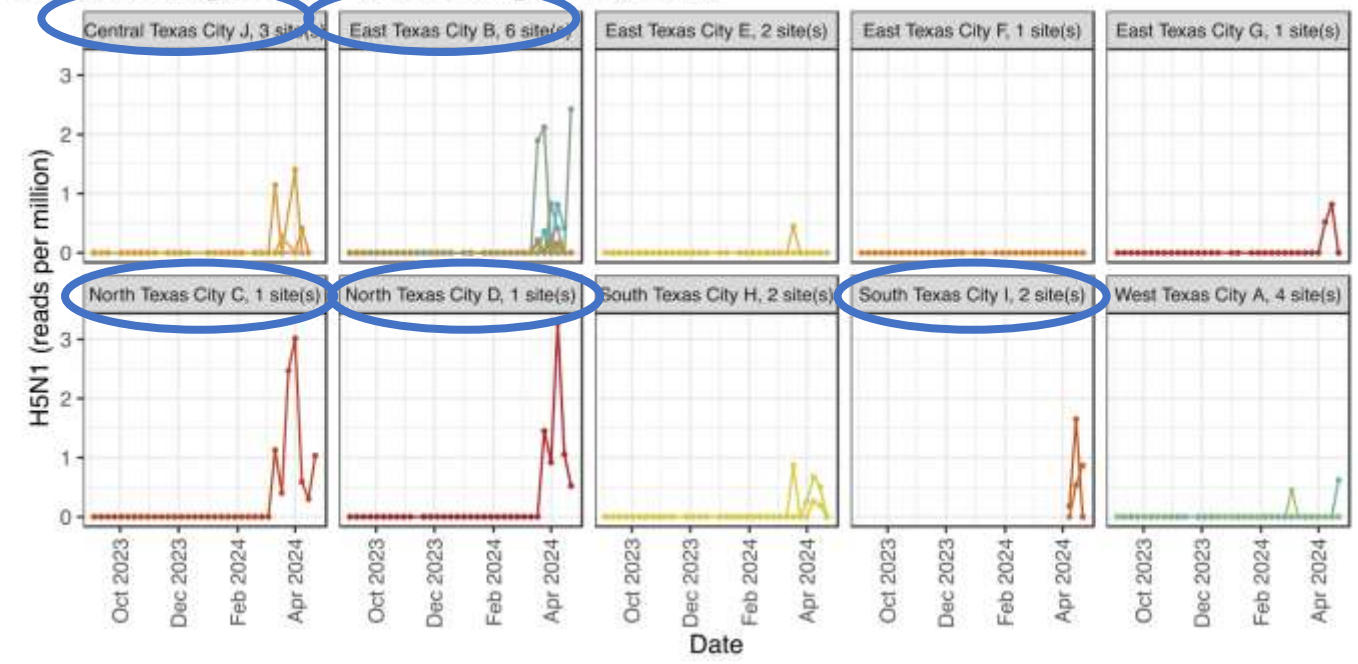
 [Post](#)

 [Like 104](#)

COVID-19 SARS-CoV-2 preprints from medRxiv and bioRxiv



Supplementary Figure 1: Site-by-site (n=23) detection and quantification of H5N1 sequencing reads from September 1st 2023 to April 25th, 2024.





USDA Support for Producers with Affected Dairy Premises



On April 24, USDA announced a [Federal Order](#) effective as of April 29, as part of its ongoing efforts to protect the U.S. livestock industry from the threat posed by highly pathogenic avian influenza (HPAI or H5N1) in dairy cattle. The Federal Order (FO) requires mandatory testing prior to the interstate movement of lactating dairy cattle and mandatory reporting of positive influenza A test results in livestock. USDA is taking these actions to address any risks to animal health, public health, and the safety of our food supply. To help producers enhance their biosecurity practices, USDA is offering additional support for producers who have HPAI confirmed positive dairy herds so they have tools to eliminate the virus and can protect their animals, themselves, their families, and their employees.

Eligibility

Dairy producers with premises that have been confirmed positive for HPAI are eligible for USDA support to conduct activities that best fit their operations. Support for these interventions is available for a period of up to 120 days from the date of confirmation of H5N1 in cattle on the affected premises.

Enrollment and Verification

Interested producers will contact the [Area Veterinarian in Charge](#) to enroll.

Producers will work with USDA personnel to develop a plan for their premises—detailing planned testing and movement, biosecurity practices and other planned activities. Following the development of this plan, the producer will draft a Detailed Financial Plan (DFP) to include all the planned activities, purchases and services associated with the actions they select (from the list below) that will be eligible for USDA financial support.

In order to assure fiscal accountability with federal funds, USDA personnel—a Field Reimbursement Specialist or their designee—will conduct a review every 30 days to monitor the progress in implementing the components of the action(s) which they have chosen to implement (e.g., is PPE being used appropriately, is the enhanced biosecurity plan being implemented).

The producer will be provided with information to sign up for a System for Award Management (SAM) registration, which will provide for the mechanism of payment or offered an alternative method of payment (e.g., providing an EFT form for direct deposit payments, requesting a paper check be drafted), although these other options will result in less timely payments compared to SAM.

Payments

Every 30 days, the producers will be provided a form (VS 1-23) to review and sign verifying the costs associated with actions below per mechanism established above.

Actions

Protect against the potential for disease spread between humans and animals. USDA will provide financial support for producers with affected herds who supply PPE to employees and/or provide outerwear uniform laundering and facilitate the participation of their workers in a USDA/CDC workplace and farmworker study.

- A flat rate per employee will be offered to producers who elect this option, up to \$2,000 per affected premises per month.
- Producers will need to provide proof of purchase of PPE or the cost of laundering services as well as acknowledgement from CDC of their participation in the study.

Support producers in biosecurity planning and implementation. USDA will provide support to develop biosecurity plans based on existing secure milk supply plans.

- This includes recommended enhanced biosecurity for individuals that frequently move between dairy premises—milk haulers, veterinarians, feed trucks, AI technicians, etc.
- Producers can elect to hire private entities to develop site specific plans, conduct biosecurity trainings, and perform audits.
 - Producers would be compensated up to \$1,500 per affected premises for these services after verification and inclusion on the DFP.
 - Producers could elect to work with State personnel who would develop site specific plans, conduct biosecurity trainings, and perform audits.
 - States would be compensated under a cooperative agreement based on the flat rates for activities chosen by the producer.
 - USDA will provide a \$100 payment to producers who purchase and install an in-line sampler for their milk system on an affected premises.

Provide funding for heat treatment to dispose of milk in a bio secure fashion. This will provide producers a safe option to dispose of their milk. Heat treatment performed in accordance with standards set by FDA is the only currently available method considered to effectively inactivate the virus in milk.

- If a producer establishes a system to heat treat all waste milk before disposal, USDA will pay the producer up to \$2,000 per month, up to \$8,000 total, per affected premises.

Reimburse producers for veterinarian costs associated with confirmed positive HPAI premises. USDA will provide support to producers to cover veterinary costs necessarily incurred for treating cattle infected with HPAI, as well as fees for veterinarians to collect samples for testing.

- This can include veterinary fees and/or specific supplies needed for treatment and sample collection.
- Veterinary costs are eligible for reimbursement from the initial date of positive confirmation at NVSL for that premises, up to \$10,000 per premises.

Offset shipping costs for influenza A testing at laboratories in the National Animal Health Laboratory Network. USDA will pay for the cost for of shipping samples to NAHLN labs for testing.

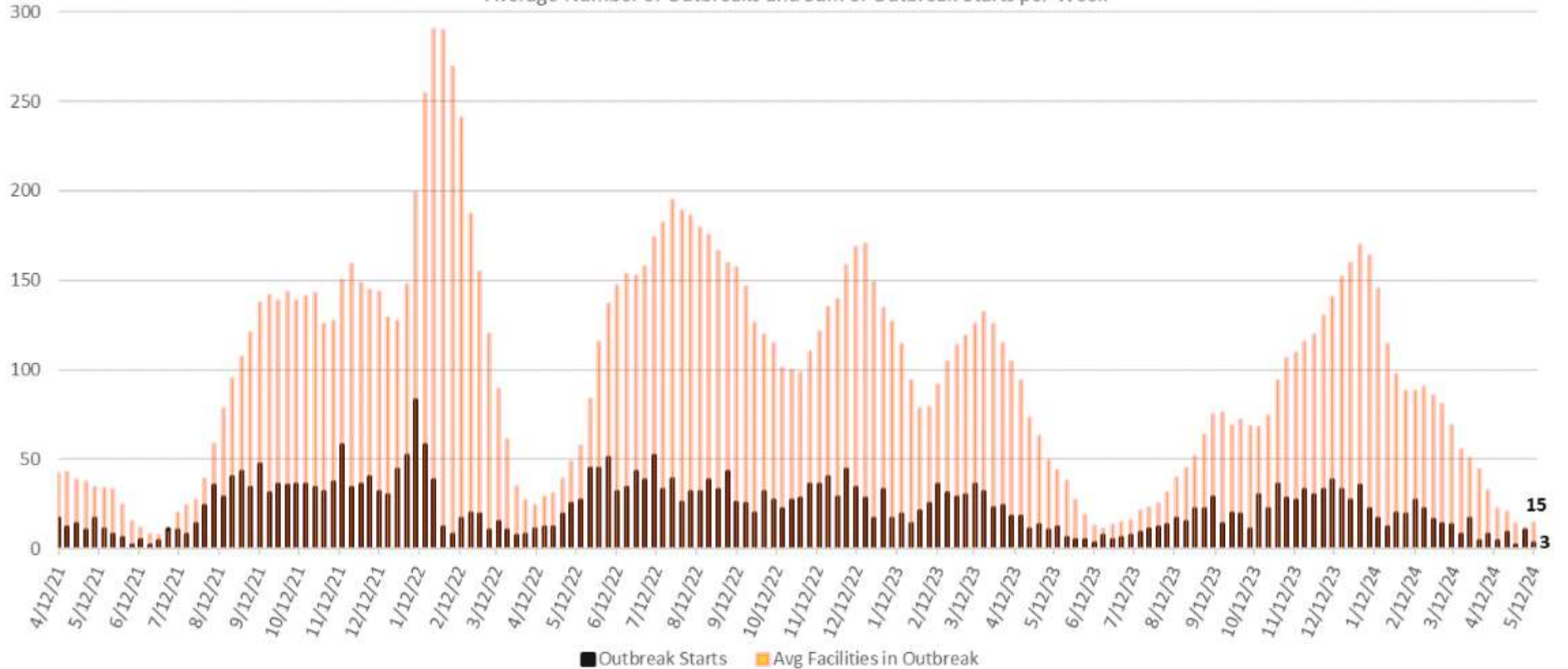
- USDA will pay actual shipping costs, not to exceed \$50 per shipment for up to 2 shipments per month for each affected premises.

PUBLIC HEALTH & COALITION LEADERS UPDATES (ALL)

ICAP LTC & ALF - JUAN TERAN

Nebraska LTC Facilities in COVID Outbreak by Week

Average Number of Outbreaks and Sum of Outbreak Starts per Week

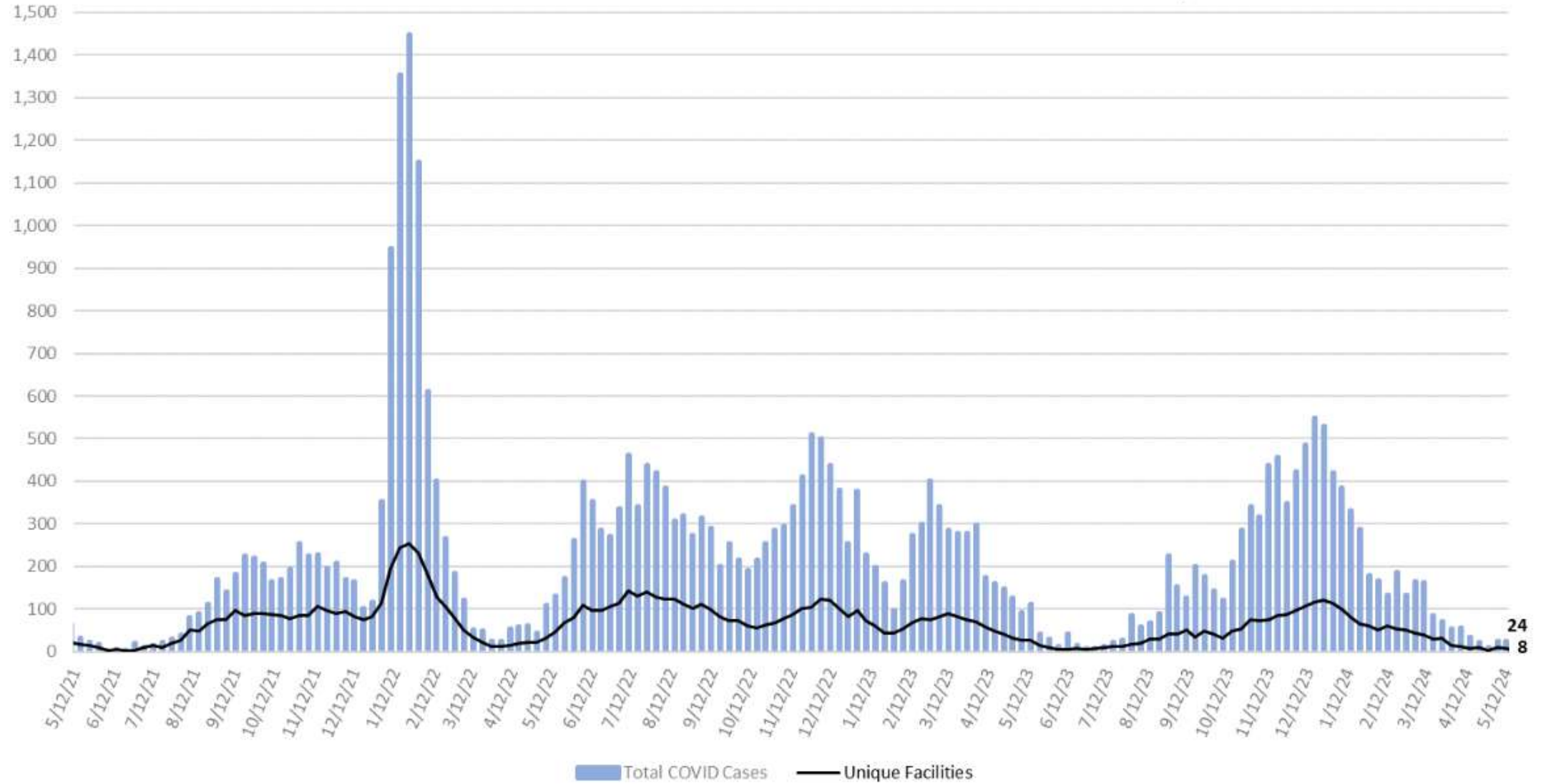


Source: Unofficial Counts Compiled by Nebraska ICAP based on data reported by facilities and DHHS; Actual Numbers may vary slightly

Slide Credit: Dan German



Nebraska LTC Resident & Staff COVID Cases & Facilities by Week

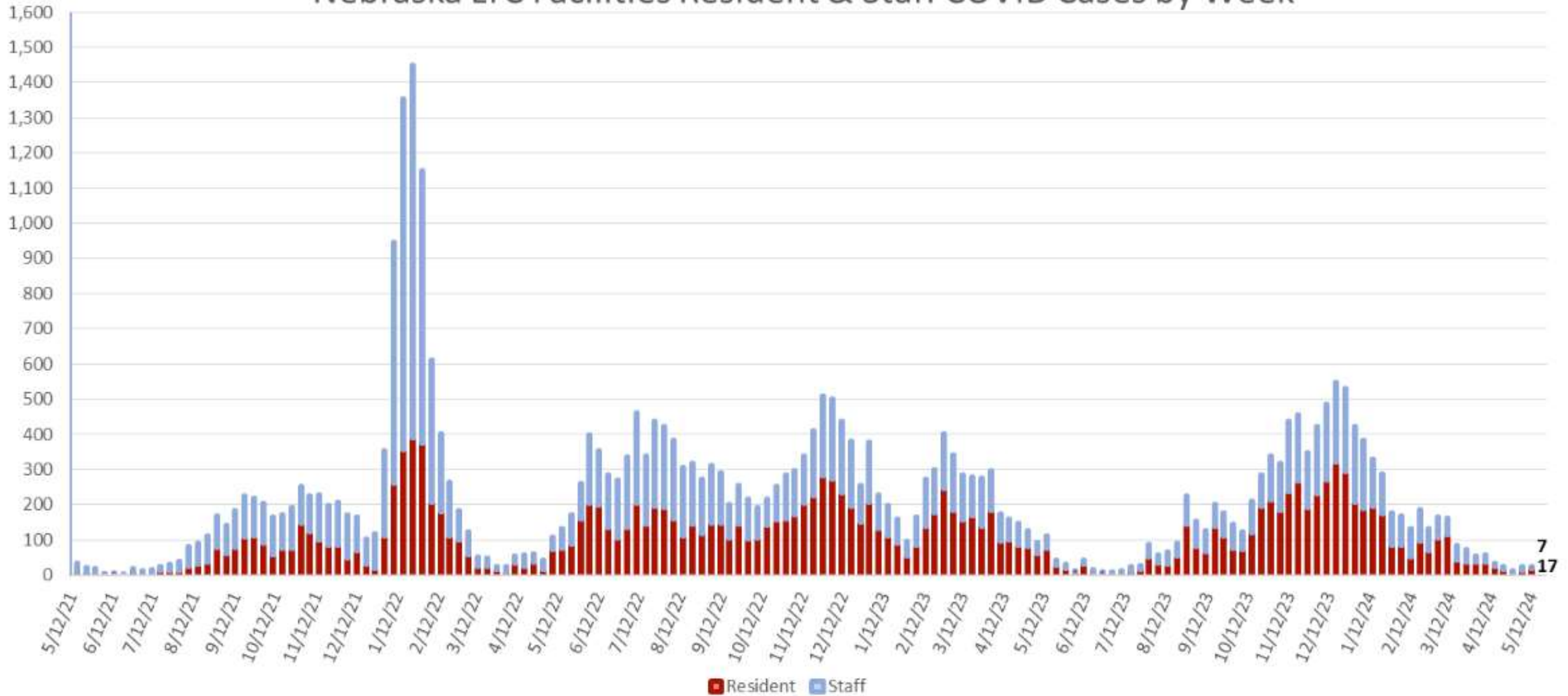


Source: Unofficial Counts Compiled by Nebraska ICAP based on data reported by facilities and DHHS; Actual Numbers may vary slightly

Slide Credit: Dan German



Nebraska LTC Facilities Resident & Staff COVID Cases by Week



Source: Unofficial Counts Compiled by Nebraska ICAP based on data reported by facilities and DHHS; Actual Numbers may vary slightly

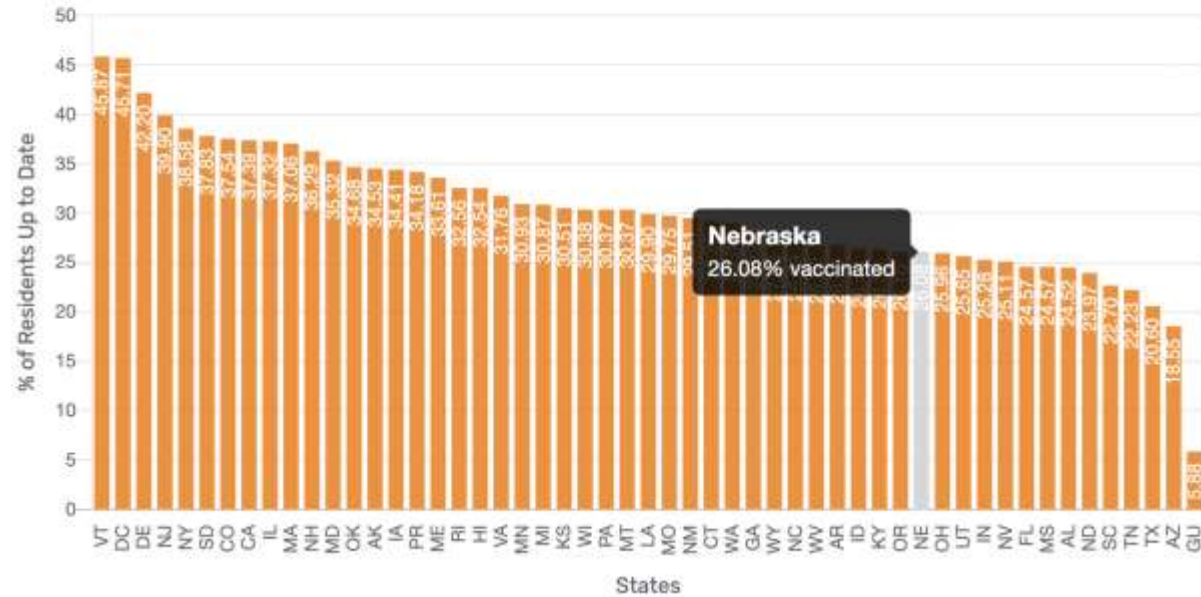
Slide Credit: Dan German



CMS Nursing Home Data

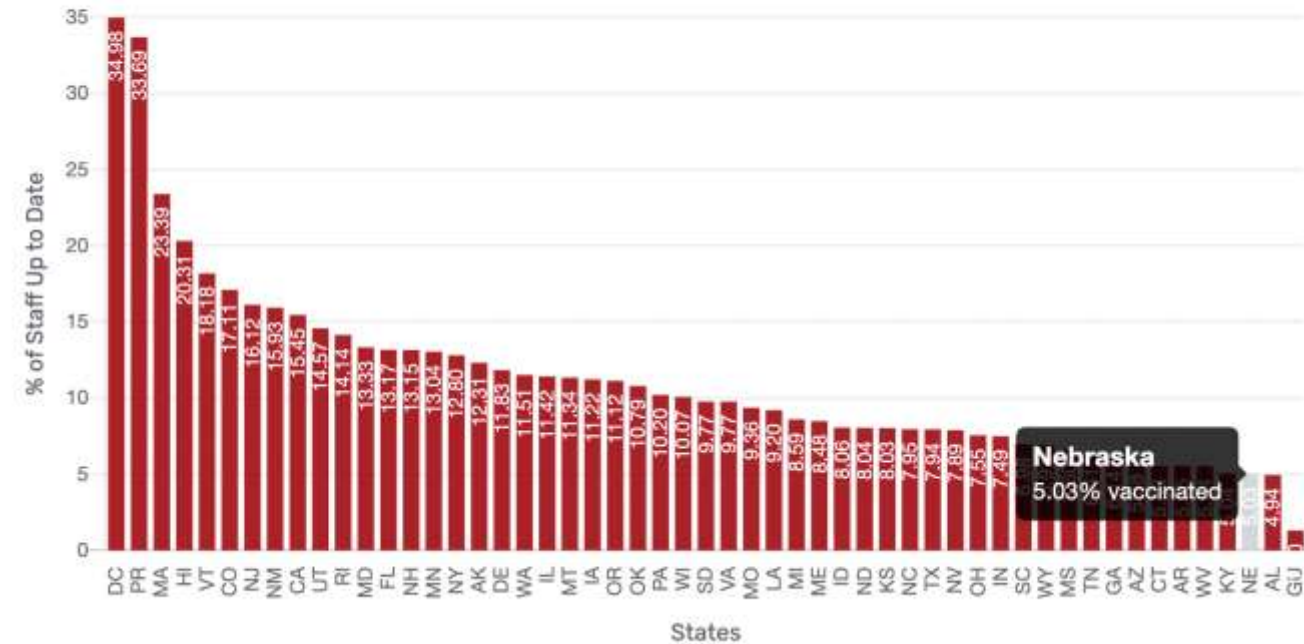
Percentage of Current Residents Up to Date with COVID-19 Vaccines per Facility

This shows the average percentage among facilities who have reported vaccination data in the current or prior week.



Percentage of Current Staff Up to Date with COVID-19 Vaccines per Facility

This shows the average percentage among facilities who have reported vaccination data in the current or prior week.



Registration is OPEN!

**2024 Nebraska
Antimicrobial
Stewardship Summit**

Smart Antibiotic Choices, Stronger Future

Friday, May 31, 2024 | 7:30 am – 3:30 pm

Embassy Suites LaVista Hotel & Conference Center

Registration information to follow

Educational Opportunity

🏠 – [College of Medicine](#) – [Department of Internal Medicine](#) – [Divisions](#) – [Infectious Diseases](#) – [ECHO](#) – [Achieving Equitable Health Outcomes in Nebraska](#) – Phase 2 - Achieving Equitable Health Outcomes in Nebraska

Phase 2 - Achieving Equitable Health Outcomes in Nebraska

This is an extension of the ongoing ECHO Project on Health Equity, Cultural Sensitivity and Quality Improvement.

Timeline: June 2023-May 2024

The highlights of registering in this project (an ECHO Project funded by Nebraska DHHS through a CDC grant) include:

- Meet the Joint Commission's new Leadership Standards that have been [elevated to a National Patient Safety Goal 16.10.01](#), and this includes ambulatory care organizations, behavioral health care, human services organizations, critical access hospitals, and hospitals, **effective July 1, 2023**.
- Remain up to date on guidance for improving COVID-19 prevention, diagnosis, and treatment in your practice setting.

IN THIS SECTION

Achieving Equitable Health Outcomes in Nebraska: An ECHO Project Funded by Nebraska DHHS through a CDC Grant

- [Phase 2 - Achieving Equitable Health Outcomes in Nebraska](#)
- [Project Team](#)

When: Third Wednesday of Every Month

Time: noon to 1 PM CST

Next ECHO Session On:
May 15th, 2024

Registration Survey Link:

<https://redcap.nebraskamed.com/surveys/?s=9D448KMYJTF4JXA4>

<https://www.unmc.edu/intmed/divisions/id/echo/health-equity/index.html>

Session 12 Topic and Objectives

Session Topic: Sustaining Progress: How to Continue Advancing Health Equity through a QI Lens

Date and Time: Wednesday, May 15th at Noon

Session Objectives:

- Characterize how summary resources from this project can be used to support health equity work in your organization
- Summarize best practices in sustaining improvement from short-term tests of change
- Discuss next steps in participant health equity improvement projects

HOT TOPICS / OTHER UPDATES

NETEC Resources for HPAI

Influenza A (H5N1)

Highly Pathogenic Avian Influenza - H5N1

On April 1, 2024, the CDC confirmed a positive human case of influenza A(H5N1) virus in the United States. The patient showed symptoms on March 27 and had been exposed to dairy cattle infected with the virus. This marks the second confirmed human case of influenza A(H5N1) in the United States and the first known case of human infection from contact with an infected mammal. Human infections with avian influenza A viruses, including A(H5N1) viruses, are uncommon but have occurred sporadically worldwide. The CDC has recommendations for clinicians on monitoring, testing, and antiviral treatment for patients with suspected or confirmed avian influenza A virus infections.



Unofficial Map of H5N1 cases around the globe by the University of Nebraska Medical Center's Global Center for

NETEC Resources



NETEC Online Course:
H5N1 for Health Care
Personnel



NETEC Online Course:
Influenza: 2022 Seasonal
Update



Laboratory Resources:
Highly Pathogenic Avian
Influenza (HPAI)



Laboratory Resources for
Highly Pathogenic Avian
Influenza (HPAI) (Blog
post)



REGION 7 RESPTC OUTREACH – Highly Pathogenic Avian Influenza

Resources on Current H5N1 Outbreak:

- [Health Alert Network \(HAN\) - 00506 | Highly Pathogenic Avian Influenza A\(H5N1\) Virus: Identification of Human Infection and Recommendations for Investigations and Response \(cdc.gov\)](#)
- [NETEC: Identify, Isolate, and Inform](#)
- [Introduction to the 2024 Joint Commission Standards for Infection Control](#)
- [The Transmission](#) – Unofficial H5N1 Map
- [PPE from A to Z: PAPRs for Respiratory Protection](#)

Special Pathogen Outbreak Information:

- [The Program for Monitoring Emerging Diseases \(ProMED\)](#)
- The Transmission - [Subscribe](#) to weekly email!
- [CDC Health Alert Network](#) – Sign up for [Email Updates](#)

NETEC Educational Resources (Educate and Train your team):

- [NETEC Repository](#) - Tons of resources available with a quick search.
- [NETEC Training and Education](#)
- [Request a training or ask a question](#)

NETEC Consultation Resources (Assess your readiness):

- [NETEC SPORSA - Hospitals](#)
- [NETEC SPORSA - EMS](#)
- [NETEC Long Term Care Workbook](#)

Region 7 RESPTC:

- [Request a Training from the RESPTC Team](#)
- [Questions for the RESPTC](#) or send us an email at Jgruber@nebraskamed.com

