

Using CLC Genomics Workbench 8.5 on the INBREweb Virtual Machine

Matthew Cserhati

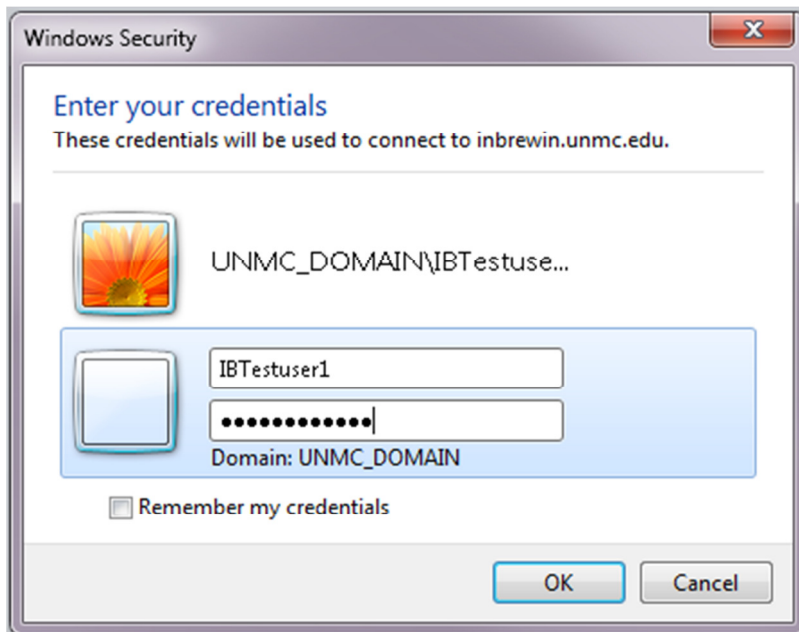
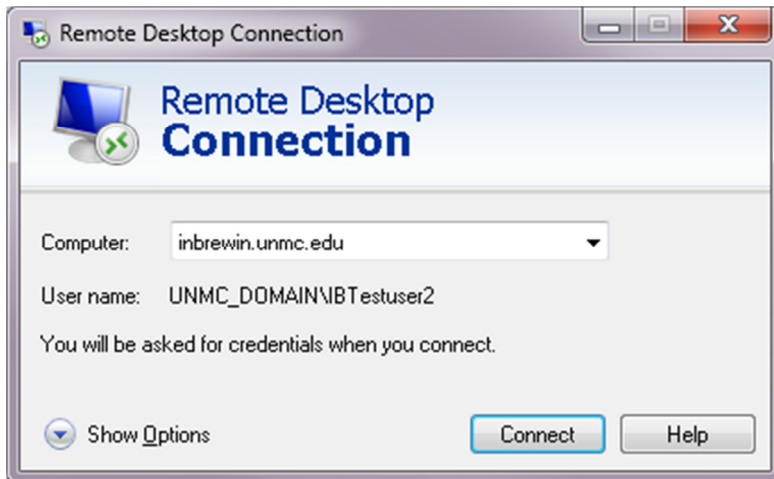
Logon

Users must register with Mike Gleason at UNMC (mgleason@unmc.edu), and create a user id and password. Start a remote desktop session and enter the following credentials below. If you are using Mac, get version 8.0.19 from the Mac App Store: <https://itunes.apple.com/us/app/microsoft-remote-desktop/id715768417?mt=12>.

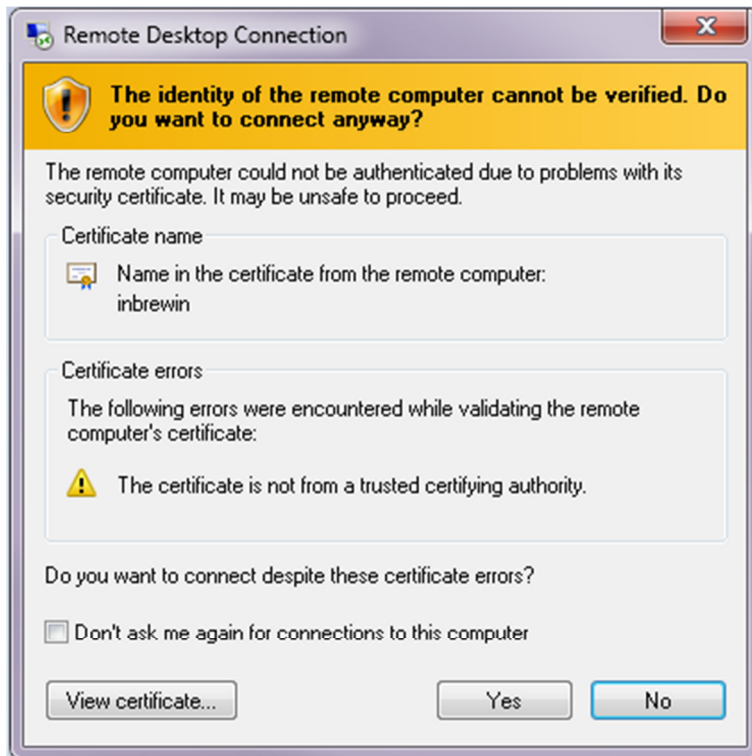
Virtual machine address: inbreweb.unmc.edu

User id: use the id that you created at setup

Password: use the password that you created at setup



Click Yes on the next screen:

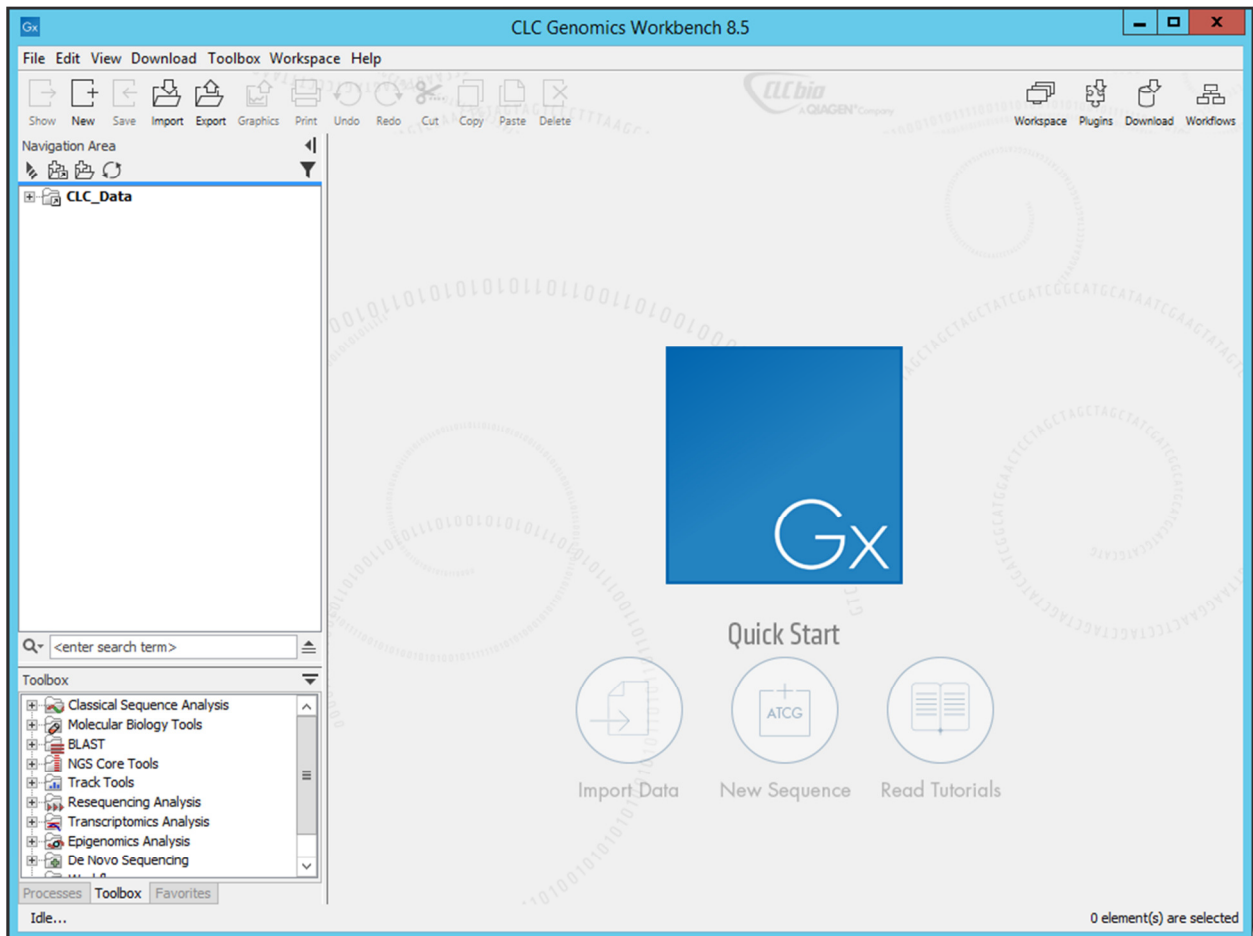


Start software

Wait for the virtual machine environment to appear. The CLC Genomics Workbench icon will appear in the upper left.



Double-click on the CLC Genomics icon to start the software. The following screen should come in:



The software might ask whether you want to import a sample data set. You may choose to do so or not at your own will. You are now ready to start working in the CLC Genomics Workbench environment!