



Secured Remote Access Using Palo Alto Global Protect with your Grid Card or Token

Information Technology Services

June 1, 2016

The following instructions are for connecting to the UNMC/Nebraska Medicine campus network via Palo Alto Global Protect VPN Client.

VPN (Virtual Private Networking) consists of a public communications network that uses Internet technologies to deliver information securely to a closed user group. UNMC and Nebraska Medicine use Palo Alto Global Protect VPN client as one method for Secured Remote Access.

The first time it's used, a small client will need to be installed. Appropriate user rights must exist on the computer in order to complete this installation

The operational changes include:

1. Split tunneling is turned off. This means that the access via your ISP to the Internet will not work when you are connected to the UNMC's network. You will have limited access to the Internet through UNMC.
2. The VPN client will automatically disconnect after 4 hours - prompting re-authentication. The VPN client also will prompt for re-authentication after 15 minutes of being idle.

If the operational changes impact your ability to access the network remotely, please contact the Help Desk at (402) 559-7700 or helpdesk@unmc.edu and we will work with you to identify technical alternatives.

These instructions were written using Windows 7.

Minimum System Requirements

- A MS Windows computer or Mac
- An already setup and configured Internet Service Provider (ISP), cable modem, or Digital Subscriber Line (DSL), or company network
- An already configured Network Portion on your workstation
- Computer should have the latest patches and have current antivirus software
- 10 MB of hard disk space
- 128MB of memory
- Internet connection

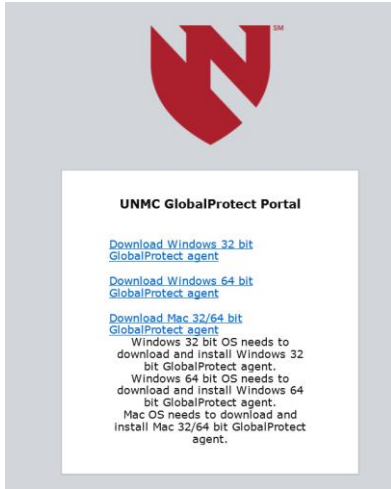
Requestor Requirements:

- Approved for Secured Remote Access
- Network credentials (username and password) to the UNMC/Nebraska Medicine network
- Grid Card or Token

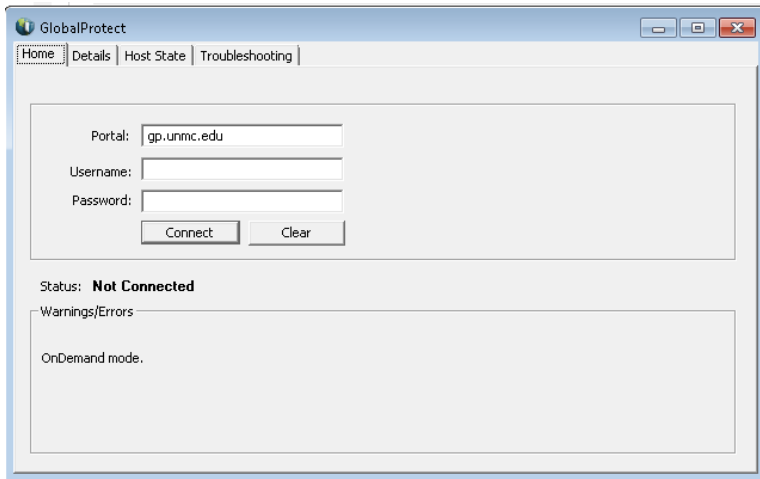


To connect:

1. Go to <https://gp.unmc.edu/>. Select the appropriate client to download. After downloading, follow the prompts to install the client.



2. Run Global Protect. The login page looks like this:



3. Enter gp.unmc.edu in the Portal field. Then enter your log on credentials that were assigned by UNMC/Nebraska Medicine and click “connect”.
4. The next screen will ask for your Entrust Grid Card coordinates (example below). At this point you should call Data Center Operations at (402) 559-5378 and identify which vendor you are from and tell them you are “remoting” in and to provide your grid coordinates. Operations will have a sheet similar to that below:



- The example below wants the characters located at: E4, F1, G4, and H4. So, using the sample grid card above as an example, enter '3DM8' (this is not case sensitive); then click "continue".

Login

Enter a response to the grid challenge [E4] [F1] [G4] [H4] using a card with serial number 271027.

More information is required to log in.

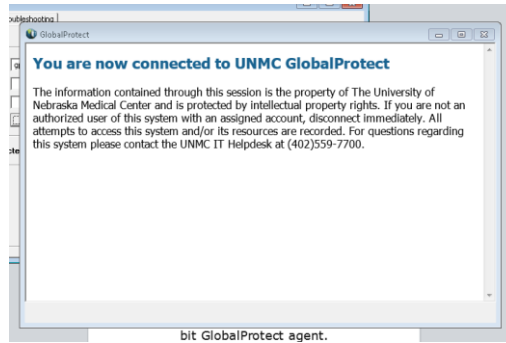
Response

Entrust

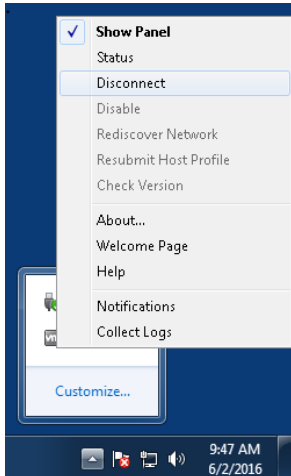
	A	B	C	D	E	F	G	H	I	J	
1	J	Q	X	3	J	D	2	4	8	Y	1
2	F	8	R	W	C	6	3	E	J	H	2
3	4	X	R	M	2	E	4	P	X	3	3
4	F	7	4	W	3	0	M	8	M	Y	4
5	Y	W	J	F	H	1	H	9	1	Y	5

Serial # XXX

- The Global Protect client will then begin to connect. Once you have successfully connected, you will see the screen below.



- Important:** While connected to the Global Protect client, you will only be able to access the resources originally requested. If access to additional resources is required, a request will need to be submitted with details of the access needs. Split tunneling is not an option.
- To end the Global Protect session, right-click the Global Protect icon located in the Windows task bar and select "Disconnect" from the menu.





9. After the initial install of the client is complete, you will no longer need to access the website in step #1 to establish a connection because the software is now on your computer. To establish a new connection from the Start menu navigate to Palo Alto Network > and select Global Protect folder and Global Protect. Then follow the instructions starting in step 2.

Important: Your UNMC/NEBRASKA MEDICINE sponsor is responsible for providing you with instructions on how to access their respective systems *after* your VPN connection is established.