


# Why SANE Nursing: A Holistic Approach to Caring for Survivors of Sexual Assault

Kate Buehler, BSN, RN, CEN, SANE



---

---

---

---

---

---


---

---

## Content Warning

The following lecture will contain information regarding sexual assault and the forensic examination which follows. If at any time you experience acute distress, please feel comfortable to leave. If you need assistance, please let me or someone else know.

2



---

---

---

---

---

---


---

---

## Objectives

- Discuss what sexual assault is and the scope of the problem in Nebraska and the United States
- Describe the role of the sexual assault nurse examiner (SANE) during the forensic examination and medical treatment of patients
- Define the purpose of a sexual assault response team in Nebraska

3



---

---

---

---

---

---

---

---

## What is considered a crime of sex in Nebraska?

### Sexual contact

- Intentional touching of the victim's sexual or intimate parts or intentional touching of the victim's clothing covering the immediate area. Touching by the victim of the assailant's sexual or intimate parts when such touching is intentionally caused by the assailant. Sexual contact shall include only such conduct which can be reasonably construed as being for the purpose of sexual arousal or gratification – Neb. Rev. Stat. § 28-318(5)

### Sexual assault; second or third degree; penalty

- Any person who subjects another person to sexual contact (a) without consent of the victim, or (b) who know that the victim was physically or mentally incapable of resisting or appraising the nature of his or her conduct is guilty of sexual assault in either the second degree or third degree – Neb. Rev. Stat. § 28-320
- Second degree assault is a felony if the assailant caused serious personal injury to the victim
- Third degree assault is a misdemeanor if no serious personal injury to the victim




---

---

---

---

---

---

---

---

## What is considered a crime in Nebraska?

### Without consent means

- (a) The victim was compelled to submit due to the force or threat of force or coercion, or the victim expressed a lack of consent through words, or conduct, or deception as to the identify the assailant
- (b) The victim need only resist, either verbally or physically, as to reasonably make known to assailant victim's refusal to consent
- (c) A victim need not resist verbally or physically where it would be useless or futile to do so

-Neb. Rev. Stat. § 28-318(8)

5




---

---

---

---

---

---

---

---

## Sexual Assault in the United States

- 80,600 inmates sexually assaulted or raped
- 60,000 Children victims of sexual abuse
- 433,648 Americans aged 12 or older were sexually assaulted or raped
- 18,900 military members experienced unwanted sexual contact
- 54% of victims are aged 18-34
- 28% of victims are aged 33-64
- 15% are aged 12-17

\*RAINN (Rape, Abuse & Incest National Network)

6




---

---

---

---

---

---

---

---

### Sexual Assault Prosecutions in the U.S.

OUT OF EVERY 1000 SEXUAL ASSAULTS, 995 PERPETRATORS WILL WALK FREE

- 230 are reported to police
- 46 reports will lead to an arrest
- 9 cases referred to prosecutors
- 5 cases will lead to felony conviction
- 4.6 rapist will be incarcerated

\*RAINN (Rape, Abuse & Incest National Network)

7



---

---

---

---

---

---

---

---

### Sexual Assault in Nebraska

- 1100 sexual assault kits completed in 2019
- Current fiscal year 2020 Nebraska has completed 1200 kits (FY ends June 2020)
- Native American Population is at a greater risk: it is estimated 1 in 3 experience sexual violence

8



---

---

---

---

---

---

---

---

### What is a SANE

Registered nurse who cares for medical and forensic needs of a patient

- Collect an evidentiary exam
- Partner with local advocacy programs
- Partner with law enforcement
- Testify
- Advocate



9



---

---

---

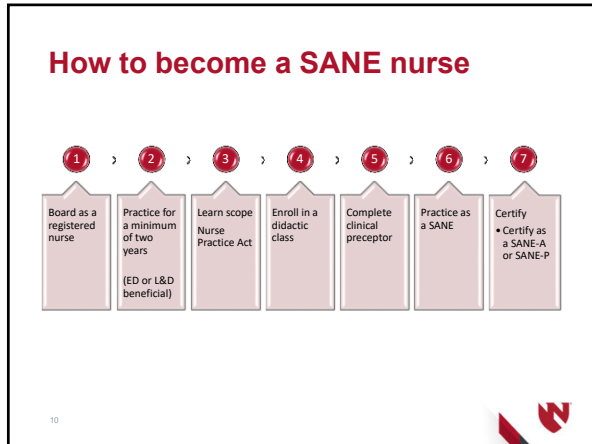
---

---

---

---

---



---

---

---

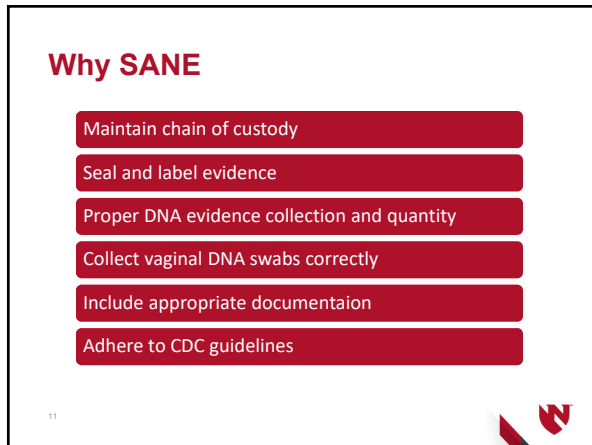
---

---

---

---

---



---

---

---

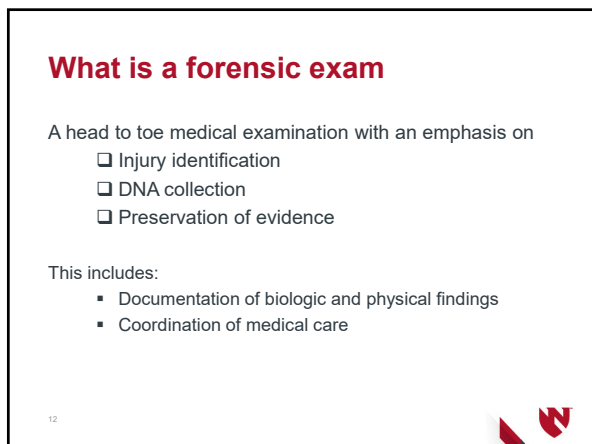
---

---

---

---

---



---

---

---

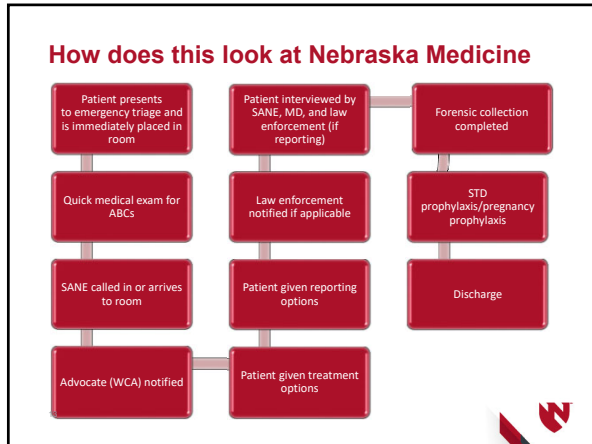
---

---

---

---

---



---

---

---

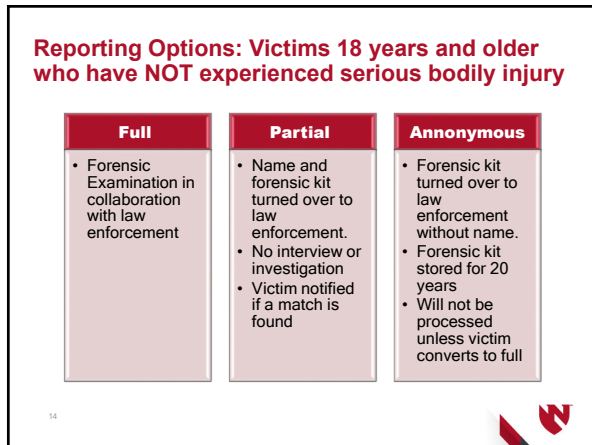
---

---

---

---

---



---

---

---

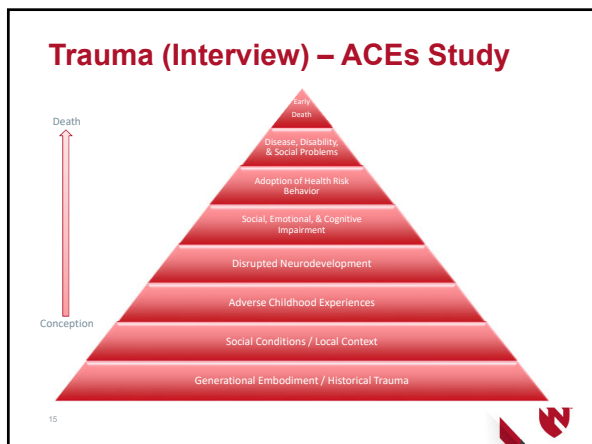
---

---

---

---

---



---

---

---

---

---

---

---

---

### Interviewing: Supportive Questions

#### Open ended questions:

- ☉ Tell me about your experience
- ☉ Are you able to remember what occurred
- ☉ What if anything do you remember

#### Patient has limited/no memory of the assault

- ☉ Is there something you cannot forget
- ☉ Is there a smell or sound which is sticking in your mind
- ☉ When the assailant did \_\_\_\_\_ was there anything else

16




---

---

---

---

---

---

---

---

---

---

### Forensic Exam

- The state of Nebraska utilizes one uniform kit
- Evidence may be collected up to 120 hours after the assault
- Patients qualify for medical treatment beyond 120 hours



17




---

---

---

---

---

---

---

---

---

---

### What is in the kit?



18




---

---

---

---

---

---

---

---

---

---

### Evidence Collection

Location	*Possible Persistence
Semen in mouth	<31 hours
Saliva on skin	0-96 hours
Sperm in anus	< 3 days
Semen in vagina	24 hours to 6-7 days or more
Sperm on the cervix	Up to 10 days or more
DNA from fingers on neck	10 days

\*Carter-Snell & Lewis-O'Connor, 2016)

19



---

---

---

---

---

---

---

---

### Photography

- When indicated and when given consent from the patient photography is used to document patient injuries
- This is a tool which preserves evidence which may not be visible at a later date
- A visual representation of the patient narrative



20



---

---

---

---

---

---

---

---

### Prophylactic STI Treatment

**As a general rule we do NOT test for STIs**

- With the exception of a rapid HIV, syphilis, and Hepatitis B

**Prophylactic treatment of**

- Trichomoniasis
- Gonorrhea
- Chlamydia

**Pregnancy prevention provided if the patient presents within 72 hours of the assault**

21



---

---

---

---

---

---

---


---

### HIV Prophylaxis

**Non-occupational Post-Exposure Prophylaxis (nPEP)**

- ⑩ 28-day course of antiretroviral therapy taken after potential HIV exposure
- ⑩ Found to have decreased risk of transmission by ~80%
- ⑩ Nebraska Medicine has grant funding to help off set this cost

22



---

---

---

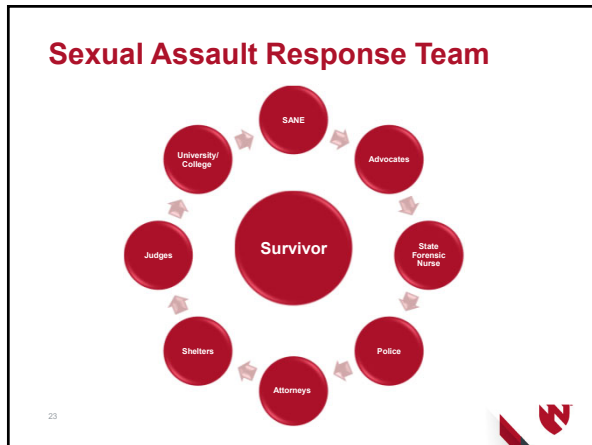
---

---

---

---

---



---

---

---

---

---

---


---

---

### Impact of the SANE nurse

- Patient has a dedicated one on one nurse
- Increased trust
- Increase reporting
- Increase in quality of evidence collected
- Expert testimony
- Improved patient recovery
- Adhering to best practice guidelines

24



---

---

---

---

---

---

---

---



## References

Carter-Snell, C. J., & Lewis-O'Connor, A. (2016). Forensic nursing in the healthcare setting. In B. Price, & K. Maguire (Eds.), *Core curriculum for forensic nursing* (pp. 41-81). Philadelphia, PA: Wolters Kluwer.

Centers of Disease Control and Prevention. (2010). The national intimate partner and sexual violence survey. Retrieved from: [https://www.cdc.gov/violenceprevention/pdf/cdc\\_nisvs\\_victimization\\_final-a.pdf](https://www.cdc.gov/violenceprevention/pdf/cdc_nisvs_victimization_final-a.pdf)

Eldredge, K., Huggins, E., Pugh, L.C. (2012). Alternate light sources in sexual assault examinations: An evidenced-based practice project. *Journal of Forensic Nursing*, 8(1), doi: 10.1111/j.1939-3938.2011.01128.x

Felitti, V. J., Anda, R. F., Nordenberg, D., Williamson, D.F., Spitz, A., M., Edwards, V., Koss, M., P., & Marks, J., S. (2019). Relationship of childhood abuse and household dysfunction to many of the leading causes of death in adults: The adverse childhood experiences (ACE) study. *American Journal of Preventive Medicine*, 56(6), 774-786. doi: 10.1016/j.amepre.2019.04.001

Juraska, A., Wood, L., Giroux, J., Wood, E. (2014). Sexual assault services coverage on native American land. *Journal of Forensic Nursing*, 10(2), 92-97. doi: 10.1087/JFN.0000000000000025

Nebraska Attorney General's Office. (2019). *Nebraska medical sexual assault protocol*. Retrieved from <https://ago.nebraska.gov/sites/ago.nebraska.gov>

Sievers, V., Murphy, S., Miller, J.J. (2003). Sexual assault evidence collection more accurate when completed by sexual assault nurse examiners: Colorado's experience. *Journal of Emergency Nursing*, 29(6), 511-514. Doi: 10.1016/j.jen.2003.08.010

RAINN. (2019). Scope of the problem: Statistics. Retrieved from <https://www.rainn.org/statistics/scope-problem>

25



---

---

---

---

---

---

---

---

---

---

## Questions



26



---

---

---

---

---

---

---

---

---

---



---

---

---

---

---

---

---

---

---

---