



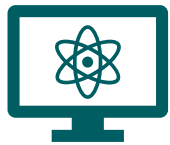
# CATCH RURAL Falls Program

## Fall Risk Management Quality Improvement Initiative for Nebraska Rural Health Clinics

**Purpose:** to provide Nebraska RHCs with education, resources, and quality improvement support to improve fall risk management practices for older adults, such as fall risk screening and assessment/intervention of common fall risk factors

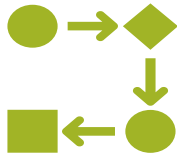
**Timeline:** the next cohort will run July - December 2025

### CATCH RURAL Falls Program Activities:



#### On-demand education

regarding fall risk management activities and implementation strategies



#### Improvement tools

to establish clinic specific goals, identify measures, run tests of change, and support implementation into practice



#### Monthly touch-points

via virtual cohort and 1:1 consultations to discuss implementation strategies and support practice change



#### Monthly data collection and reporting

to evaluate outputs and changes in fall risk management practices

### To Register:

- For more information or to register for the next cohort of the CATCH RURAL Falls program, please contact Dawn Venema, PT, PhD, [dvenema@unmc.edu](mailto:dvenema@unmc.edu), or Victoria Kennel, PhD [victoria.kennel@unmc.edu](mailto:victoria.kennel@unmc.edu)
- Registrations requested by Wednesday June 25<sup>th</sup>; however, rolling admissions are accepted

Visit the CATCH RURAL Falls program website at:

<https://www.unmc.edu/patient-safety/catch-rural-falls/index.html>

### Who leads the program?

- Dawn Venema, PT, PhD
  - Victoria Kennel, PhD
- Drs. Venema and Kennel have over a decade of experience in fall risk reduction and quality improvement programming. They also co-lead the CAPTURE Falls program which has supported inpatient fall risk reduction efforts in over 30 Nebraska Critical Access Hospitals.*

### What are expectations for participation?

- Commit to making improvements in fall risk management practices for older adult patients seen in your clinic
- Participate in program education and cohort activities to facilitate collaboration among RHCs
- Participate in monthly fall risk management data collection and reporting to track progress and evaluate improvement over time



This program is funded by the Nebraska Department of Health and Human Services Medicare Rural Hospital Flexibility Program.

