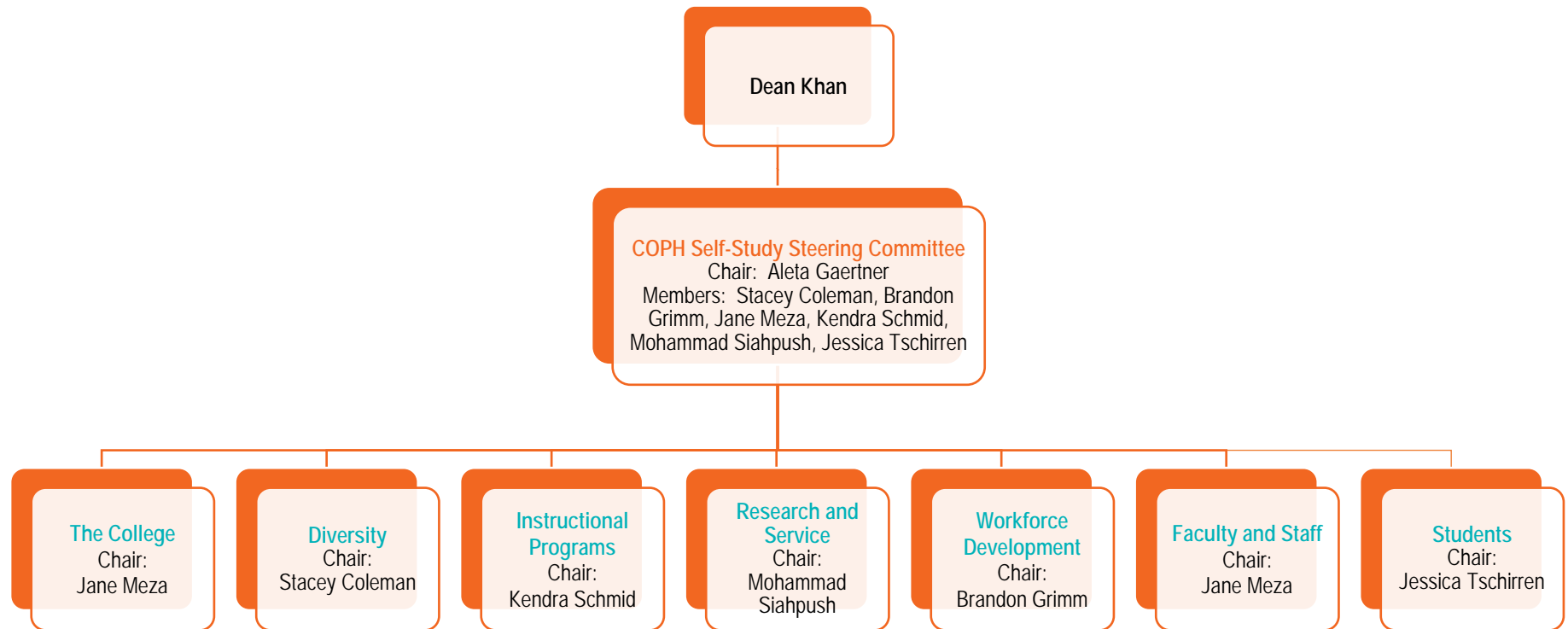


COPH Self-Study Organizational Structure



Steering Committee Charge:

- Oversee overall implementation
- Ensure collaboration and integration occurs among the workgroups and across the college
- Reduce duplication of efforts across workgroups

Workgroup Charge:

- Document requested policies, procedures, practices, and programs
- Review document narrative and data,
- Offer suggestions for improving clarity in demonstrating compliance with criteria,
- Propose updates to Targets to GF
- Describe Strengths and Challenges, and
- Recommend Plans for noted Challenges.