

# Center for Reducing Health Disparities

Annual Report 2020



Working with Communities to Improve Health through Collaborative Research, Education and Service



# TABLE OF CONTENTS

<b>Message from the Center Director</b> .....	5
<b>The CRHD Vision</b> .....	7
<b>Community Engagement, Service and Advocacy</b> .....	10
CRHD Programs & Interventions .....	11
Partnerships with Other Organizations and Campus Groups.....	24
Advocacy Activities & Professional Services.....	30
Community Engagement Presentations .....	37
<b>Education and Scholarship</b> .....	38
Courses Offered by CRHD Faculty.....	39
Student Advising.....	40
Educational Presentations & Guest Lectures.....	41
<b>Research</b> .....	43
Research Projects   Grants.....	44
Original Peer-Reviewed Publications.....	67
Manuscripts Under Review and Reports.....	73
Book Chapters and Research Presentations .....	75
Journal and Grant Reviewers .....	77
<b>The CRHD Team</b> .....	78
<b>Contact Us</b> .....	97



Dear Friends,

I hope this note finds you safe and healthy as we are still going through a historic pandemic. Despite the disruptions and distress incurred by the COVID-19 pandemic, I am glad to share with you that during the calendar year of 2020, the Center for Reducing Health Disparities has managed to maintain productivity and growth in community outreach and services, extramural funding support, and community-engaged research that are responsive to emerging health needs due to the pandemic.

In February 2020, with the support of Dean Khan, our Center led the efforts to host an important site visit from the Association of Schools and Programs of Public Health (ASPPH) as part of our College's application for the Harrison Spencer Award for Outstanding Community Service. Based on their review of our submitted application and the site visit, ASPPH issued this award to the College of Public Health at UNMC, making our college the third public health program in the whole nation to ever win this prestigious award! This great honor to our College also serves as a testament of the scope and impact of our Center's accomplishments in community outreach, services, and community-engaged research over the years. We deeply appreciate the support and participation from our community partners who wrote letters of support and who actively participated in the site visit by ASPPH.

The year of 2020 was marked by our significant efforts and successes in conducting sponsored research, as partially reflected by 48 peer-reviewed publications by Center members and several newly funded community-engaged research projects and grant submissions, as highlighted below:

1. Dr. Ramos received a health disparities pilot grant from the UNMC VCR Office to test an intergenerational physical activity program among Latino older adults and children. She also led the efforts in conducting a study of over 600 Midwestern meatpacking workers and their perceptions and concerns related to COVID-19.
2. Our Center received two 2020 COPH COVID Response Grants, with one led by Dr. King entitled "NOCCC Cares: Educating and Addressing COVID-19 Related Needs in North Omaha", and the other one led by me entitled "A Community Assessment to Recommend an Optimal COVID-19 Vaccination Plan in Nebraska."
3. We signed two contracts with Nebraska Department of Health and Human Services (DHHS), with one focusing on assessing the role of community health workers in promoting maternal and child health in Nebraska and the other on community-level screening of mental health issues among children and youth during the pandemic.
4. We appreciate that, with the help from Dean Khan, a new grant from the Lozier Foundation has made it possible for Ms. Kenya Love from our Center to work with the Omaha Housing Authority (OHA) to launch the project "Black Mental Health Matters: The

COVID-19 Effect”, in which they will be piloting the PHQ9-A screening referral tool and launching a referral network to identify behavioral/mental health needs and connect OHA’s ‘Opportunity Youth’ and families to additional behavioral health services.

5. Based on findings from our community health needs assessment, over 60% of church members in the African American faith communities in Omaha have hypertension. I led the efforts in working closely with our partners from the African American faith communities in Omaha, Nebraska Medicine Fontenelle Clinic, and the UNMC Library to submit a grant application to the National Library of Medicine that seeks to establish a new model for hypertension prevention and control in African American faith communities. I want to thank all our partners in this grant submission, especially our community partners Mrs. Doris Lassiter, Rev. Dr. Ralph Lassiter, and Rev. Dr. Selwyn Q. Bachus for their partnerships and support.

Our Center has been proactive and effective in reaching out to local communities to help address some of their emerging health needs during the pandemic. Under the directorship of Dr. Toure, the Bridge to Care program partnered with Douglas County Health Department and other stakeholder agencies to provide more than 50,000 PPEs to underserved communities in 2020. It is also commendable that despite the pandemic, the Bridge to Care program successfully and safely hosted its Annual Fall Refugee Health Fair on November 7, 2020 at the Benson High School whereby more than 200 refugees in the Omaha area received flu shots, toiletries, foods, and PPE including masks, gloves, and hand sanitizers.

The year of 2020 witnessed some personnel changes at the Center. We bid farewell to Ms. Maria Teel, our former Office Associate who served the Center for about five years before she relocated residency to another state. We appreciate that we could have Ms. Tari Rose as our Center’s new Office Associate and Dr. Fabiana Silva join us as a new faculty member.

Thank you for your attention and support to the Center for Reducing Health Disparities. We look forward to our continuous partnerships to promote health equity and social justice in Nebraska and beyond in the years ahead.

Sincerely,



Dejun Su, PhD  
Director, Center for Reducing Health Disparities  
Associate Professor Department of Health Promotion  
College of Public Health  
University of Nebraska Medical Center

# The CRHD Vision and Mission



## **Vision of the Center**

To become a nationally recognized Center of Excellence for promoting health equity through quality research, education, and community engagement.

## **Mission of the Center**

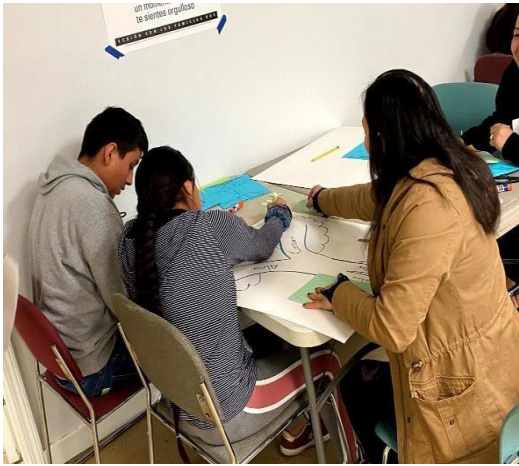
To promote equity and social justice in health and health care by leading collaborative efforts to generate and disseminate evidence-based, policy-relevant solutions.

## **Goals**

- 1:** Enhance the role of UNMC in addressing disparities in health outcomes among Nebraskans through consistent community engagement, partnerships, and advocacy.
- 2:** Promote translational research that would help reduce disparities in health status and health care at the local, state, national, and global levels.
- 3:** Support UNMC's education initiatives in health disparities.







# Community Engagement, Service and Advocacy



## 2020 Harrison Spencer Award for Outstanding Community Service from ASPPH



Representatives from ASPPH were meeting with our community partners during their site visit to UNMC.

In February 2020, with the support of Dean Khan, our Center led the efforts to host an important site visit from the Association of Schools and Programs of Public Health (ASPPH) as part of our College's application for the Harrison Spencer Award for Outstanding Community Service. Based on their review of our submitted application and the site visit, ASPPH issued this award to the College of Public Health at UNMC, making our college the third public health program in the whole nation to ever win this prestigious award! This great honor to our College also serves as a testament of the scope and impact of our Center's accomplishments in community outreach, services, and community-engaged research over the years. We deeply appreciate the support and participation from our community partners who wrote letters of support and who actively participated in the site visit by ASPPH.

# CRHD PROGRAMS & INTERVENTIONS

## Health Fairs

### Bridge to Care Health Fairs

The Bridge to Care (BTC) Annual Fall Refugee Health Fair was held on November 7, 2020. In collaboration with Benson High School, Walgreens, and Methodist Health Care System, BTC held an outdoor health fair at the Benson High School parking lot. More than 200 refugees in the Omaha area received flu shots, toiletries, food, and personal protective equipment (PPE) including masks, gloves, and hand sanitizers. Dr. Toure worked with students from the College of Public Health, Pharmacy, Nursing and Medicine to facilitate the fair. Methodist Care System provided interpreters. Walgreens offered flu shots, MUNA box, and Calistus Myeloma Foundation provided food and toiletries.

### Islamic Center of Omaha (ICO) Basic Health Screening

On November 6, 2020, over 20 people at ICO received the flu vaccine. Dr. Toure and Rasila Soumana and volunteers coordinated the event.

## Healthy Living

### All of Us Research Initiative Outreach Program

The Center is partnering with the National Alliance for Hispanic Health to promote the All of Us Research Initiative. All of Us is an initiative of the National Institute of Health (NIH) and is a major piece of the Precision Medicine Initiative. All of Us seeks to engage one million or more people in the U.S. to contribute their health data to improve health outcomes, fuel the development of new treatments for disease, and catalyze a new era of evidence-based and more precise preventive care and medical treatment. All of Us aims to engage a community of participants that reflects the diversity of America, including many people who have been underrepresented in biomedical research. Our Center has been working to promote this research initiative among Latino communities in Nebraska since 2019. During 2020, our team had to adopt different strategies to reach the Hispanic/Latino community during the COVID-19 pandemic.

Besides our consistent presence on social media (e.g., Facebook, Twitter, Instagram), we implemented virtual outreach strategies. We have participated in live radio shows on Radio LOBO 97.7 F.M., a Spanish radio station that reaches around 250,000 Hispanic people in Nebraska. We were also invited to talk about the program on a local TV show on KPAO Community Television. We have participated in community and academic presentations, virtual health fairs (e.g., UNO virtual Health and Wellness Fair and the Mexican Consulate's Binational Health Week), as well as one-on-one meetings with community members and leaders.

# COMMON GROUND

An Interprofessional Forum focused on Health Disparities



**PRESENTERS:**

**Marcela Carvajal-Suarez, MPH**

Outreach Project Specialist, Center for Reducing Health Disparities, UNMC

**Natalia Trinidad, MPH**

Outreach Project Associate, Center for Reducing Health Disparities, UNMC

**TOPIC:**

## Health Disparities Impacting Hispanic/Latino Communities in Nebraska

Join our conversation with Marcela and Natalia about the various health-related issues impacting the Hispanic and Latino communities they collaborate with.

Have a specific question you want our speaker to address during the session?

Email them to [AndreTan@creighton.edu](mailto:AndreTan@creighton.edu)

DATE: November 13<sup>th</sup>, 2020 (Friday)

TIME: 12:00 pm – 1:00 pm

ZOOM LINK: <https://creighton.zoom.us/j/92543436845>

Invitation for one of the academic presentations where the team promoted the *All of Us* program and the underrepresentation of Hispanic/Latinos in biomedical research.

The Center for Reducing Health Disparities hosted a TweetChat on June 23, 2020, to highlight and promote healthy lifestyles and generate ideas to improve health outcomes. During the TweetChat, we also promoted the "All of Us" research program that seeks to understand all these lifestyle patterns to improve precision medicine. In order to keep track of the conversation and understand the impact of the activity, we created the hashtag #Health4Us. The following analytics describes the impact of the TweetChat that involved 19 contributors. Table 1 shows the metrics of the TwitterChat.

Table 1. Impact of the TweetChat hosted by the UNMC Center for Reducing Health Disparities on June 23, 2020.

Description	Number
Original Tweets*	101
Potential impacts	110,101
Potential reach	14,043
Contributors	19
Tweets/contributor	6.47
Followers/contributor	739.11

\*Number of original tweets shared with the hashtag #Health4Us. Retweets excluded.

## COVID-19 Response

The Center has played a critical role in helping communities to respond to the COVID-19 pandemic. We have been a key partner in providing information and resources to community members. Below are some of the activities that we have taken:

- Under the directorship of Dr. Toure, the Bridge to Care program partnered with Douglas County Health Department and other stakeholder agencies to provide more than 50,000 PPEs to underserved communities in 2020.
- Our Center received two 2020 COH COVID Response Grants, with one led by Dr. King entitled “NOCCC Cares: Educating and Addressing COVID-19 Related Needs in North Omaha”, and the other one led by Dr. Su entitled “A Community Assessment to Recommend an Optimal COVID-19 Vaccination Plan in Nebraska”.
- With the help from Dean Khan, a new grant from the Lozier Foundation has made it possible for Ms. Kenya Love from our Center to work with the Omaha Housing Authority (OHA) to launch the project “Black Mental Health Matters: The COVID-19 Effect”, in which they will be piloting the PHQ9-A screening referral tool and launching a referral network to identify behavioral/mental health needs and connect OHA’s ‘Opportunity Youth’ and families to additional behavioral health services.
- Dr. Ramos led the efforts in conducting a study of over 600 Midwestern meatpacking workers and their perceptions and concerns related to COVID-19.
- Dr. Su led a team of investigators to work closely with the National Opinion Research Center (NORC) at the University of Chicago to successfully complete a national survey (n=2,709) entitled “Health, Ethnicity, and Pandemic” (HEAP) to examine changes in health, health behavior, and exposure to racism during the COVID-19 pandemic by different racial and ethnic groups in the United States.
- Based on a request from Centers for Medicare & Medicaid Services, Dr. Estabrooks and Dr. Su led a team from the College of Public Health to work closely with Dr. James Lawler to conduct a series of preparations for the launching of a national hotline advising on clinical management of COVID-19, including recruiting hotline personnel, developing training program, and establishing hotline protocol.
- Co-hosted a virtual townhall with State Senator Tony Vargas about COVID-19 on March 22, 2020.
- Provided information to help the Latino Center of the Midlands populate a bilingual English/Spanish COVID-19 resource webpage.
- Assisted community organizations in hosting virtual meetings by providing access to Zoom videoconferencing software.
- Facilitated access to UNMC experts for the South Omaha Neighborhood Alliance (SONA) meetings and other community partners.
- Coordinated virtual meetings with community partners in non-metropolitan areas of Nebraska.
- Provided multilingual COVID-19 health and safety information to the public through a variety of channels including live virtual meetings, social media, print, radio, and TV.

## Mental Health First Aid

Mental Health First Aid is an international program which has proven to be effective in:

- 1). Growing knowledge of signs, symptoms and risk factors of mental illnesses and addictions
- 2). Identifying multiple types of professional and self-help resources for individuals with a mental illness or addiction
- 3). Increasing their confidence in and likelihood to help an individual in distress
- 4). Increasing mental wellness among participants.



Studies also show that the program reduces the social distance created by negative attitudes and perceptions of individuals with mental illnesses. This year, Marcela Carvajal became a certified facilitator for the Mental Health First Aid USA program. Now, both Natalia Trinidad and Marcela Carvajal are certified to facilitate the adult program and are amongst the few Spanish-language trainers in the state of Nebraska. Due to the COVID-19 pandemic, Natalia and Marcela were also trained to be able to offer the course virtually.



Marcela's completion of the Virtual MHFA Training on October 15, 2020. The koala is the MHFA mascot.

## Active Training Listening Session with Black Men STEP’N

Black Men STEP’N is a violence intervention workgroup developed in response to the increased homicide rates over the 2020 summer months due to gang violence. As they began their outreach efforts, the group asked Dr. Keyonna King and her team to conduct an active listening training to help members of the workgroup increase the effectiveness and efficiency intervening to quell potentially violent and fatal interactions between rival gangs. The 2-hour training took place on October 13, 2020 and provided the workgroup with knowledge and skills to improve their active listening including discussion groups, role playing, and development of critical active listening principles tailored to their violence intervention work.



Dr. Keyonna King and Graduate Assistant, Titilola Labisi, kicking off the Active Listening Training.



Active Listening Activity: Critical Elements to Being an Active Listener



Graduate Assistants Titilola Labisi and Divine Shelton facilitating training activity



## **Douglas County Board of Health COVID-19 Response**

Since 2019, Dr. Keyonna King has been a member of the Douglas County Board of Health (DC BOH). This year, her role was critical in helping to guide the Douglas County Health Department's response to COVID-19. Dr. Adi Pour and other DCHD staff presented monthly updates to the board for their consideration and feedback. With approval from the DC BOH, Dr. Pour attempted to pass a mask mandate. Unfortunately, she was unsuccessful, but eventually Omaha's City Council followed suit to pass the mask mandate for the city. Other surrounding cities also began to mandate mask wearing.

## **Second Annual 2020 HS-MACA & CPPHE Hackathon**

Dr. Keyonna King served as a judge in Creighton University's Health Sciences Multicultural and Community Affairs Department Second Annual Hackathon hosted by Creighton's Center for Promoting health and Health Equity and RadLab. This two-day virtual event took place over October 29-30, 2020. The Hackathon was developed to provide an opportunity for young leaders in the fields of software development, business, and public health to collaborate and create tangible solutions for the prevention and elimination of health disparities. This year, the theme was Mental Health Disparities. Students worked with mentors of various specialties to breathe life into their ideas, devise a plan and prototype for their application or technological solution. All participants were judged on 1) public health impact, 2) business potential, 3) innovation and ambition, 4) quality, and 5) presentation.

## **Avenue Scholars Power Hour**

On December 2, 2020, Dr. Keyonna King was the guest speaker at Avenue Scholar's Power Hour to discuss applying the CBPR approach to engage community in addressing health disparities. In addition, she presented on local data regarding health disparities and how Avenue Scholar staff can continue to address the social determinants of health with special focus on education to reduce and eliminate health disparities.

## Youth Engagement

### Health Professionals Career Day

Kenya Love and UNMC Center for Reducing Health Disparities collaborated with Empowerment Network's Step-Up Summer Program, UNMC Recruitment and Student Engagement, CPH Student Affairs, College of Allied Health Profession, UNO, and UNMC Office of Community Engagement to host the 5th annual Health Professions Career Day. The event was held on June 23, 2020. This year's theme was COVID-19 Response in Nebraska. Approximately 100 youth between the ages of 14-15 from North and South Omaha took part in exploring different health professions including environmental health, public health, and allied health. Participants had the opportunity to discuss with a panel how different health professions are addressing COVID-19 disparities, and healthy behaviors to practice for emotional/mental wellbeing during the pandemic. Step Up is a career exploration, training, and education program that seeks to address the unemployment rate in the highest impoverished areas in Omaha. The next Health Professions Career Day will be held June of 2021.

- **85.1% of participants were Black and reside in zip codes 68111, 68112, and 68104.**
- **Health Profession Most Commonly Interested In** 21.6% Dentistry, 20.3%Nursing.
- **Top 2 Barriers to Education:**
  - Money/Finances
  - Academic Challenges (grades, studying)
  - 50 % of participants are likely/very likely to pursue a career in healthcare after graduating from high school.

## Support Groups & Workshops

### Public Health Career Pathways

In February 2020, Bridge to Care in collaboration with Benson High School, organized Students Mock Interview Health career focused. About 15 students participated, and most of the participants were refugees.

### Student Refugee Cultural Competency Training

Dr. Toure in collaboration with Alana Schriver (Refugee Specialist), trained a total of 32 students across UNMC colleges and graduate studies to promote cultural and social effective health services for resettled refugees.

## Support Groups & Workshops

### Strengthening Families

The Strengthening Families program is an evidence-based family skills training program found to significantly improve parenting skills and family relationships, reduce problem behaviors including delinquency and alcohol and drug abuse in children, and to improve social competencies and school performance. Dr. Athena Ramos, Marcela Carvajal, and Natalia Trinidad are trained program facilitators. The Center in partnership with Monroe Meyer Institute and the Latino Center of the Midlands implemented the Strengthening Families program this year with eight families in February and March 2020, but the program was canceled after the third session due to the COVID-19 pandemic and restrictions on in-person programming.



Participants in the Strengthening Families program



The Center in Partnership with the Monroe Meyer Institute and the Latino Center of the Midlands implemented the Strengthening Families program.

### Tobacco Prevention and Control

The Tobacco Prevention Program at the Center has been funded by Tobacco Free Nebraska since 2002. The program continues to be a major component of the services provided to the Latino community by the Center. This program focuses on tobacco education and prevention in both youth and adults. This initiative has been successful due to the use of culturally and linguistically sensitive approach. In addition to tobacco prevention, the program focuses on health issues related with tobacco use, like diseases and disparities in healthcare access affecting the Latino community. The Center works closely with community agencies, businesses, faith-based organizations, and tobacco-free coalitions to educate, collaborate, and promote tobacco-free lifestyles. The Center focuses on tobacco prevention outreach, education, and engagement, serving on the front lines to address the health needs associated with tobacco use and exposure to secondhand smoke of the underserved with the goal of attaining and maintaining a healthy lifestyle. This year we continued to participate in events and activities that were offered virtually.

Below is a list of some of the programs that are associated with this project:

- **Cessation (Quitting) Program** - Natalia Trinidad is a certified American Lung Association *Freedom From Smoking* program facilitator. The program features a step-by-step plan for quitting smoking and transitioning to a smoke-free lifestyle. Each session is designed to help smokers gain control over their behavior, and because no single quit smoking plan is effective for all smokers, the program has a variety of evidence-based techniques for individuals to combine into their own plan to quit smoking. Natalia Trinidad is available to provide an 8-week cessation program in English and Spanish. The cessation program includes information on behavioral modification, peer support, and basic information on pharmacotherapy.
- **Health + Housing Partners Meetings** - Dr. Athena Ramos and Natalia Trinidad participate in Omaha's Health + Housing Partners Initiative. As part of the group, MOTAC provides community education and training, technical assistance for policy development, mapping technology for tobacco-free locations, and promotion of tobacco-free/smoke-free initiatives and acts as a collaborative partner to set and achieve collective action plan.
- **Latinas, Tabaco, y Cáncer (LTC)** - Marcela Carvajal, Natalia Trinidad, and Dr. Athena Ramos support the Latinas, Tabaco, y Cáncer project. Latinas, Tabaco, y Cáncer (LTC) is a group of Latina women, mainly from South Omaha, engaged in education and advocacy activities to develop community-based projects that build community capacity and influence the social norms around tobacco use, exposure to secondhand smoke, and health promotion. The LTC members gathered in person in February 2020 to learn about tobacco and heart health. Because of the COVID-19 pandemic, the group started meeting virtually in April 2020 and thereafter every month for one hour. Each month averaged about ten women who participated in the virtual meetings. Some were new participants to the group.



LTC members and CRHD staff celebrating the American Heart Month in our meeting on February 20, 2020.

- **Partnership with the Nebraska Hispanic Chamber of Commerce** - Marcela Carvajal, Natalia Trinidad, and Dr. Athena Ramos participated in the Hispanic Chamber of Commerce as a way to reach Latino businesses and leaders about tobacco-related issues. Due to the COVID-19 pandemic, the meetings are now held virtually.



Marcela Carvajal receiving the membership recognition from the NHCC Ambassador on January 31, 2020.

- **Social Media Outreach** – The Center organized a TweetChat on October 28, 2020, on behalf of MOTAC and also participated as a co-host. The TweetChat highlighted what is being done to promote healthy environments in the Omaha metro area. Other co-hosts included the Omaha Healthy Kids Alliance of the Midlands (TEAM). In order to track the conversation and understand the impact of the activity, we created the hashtag #CleanSpaces4All. The following analytics describes the impact of the TweetChat that involved 11 contributors.

Table 2. Impact of the TweetChat organized by the CRHD on behalf of MOTAC on October 28, 2020.

Description	# of People
Reach	3,435
Participants	23
Active Participants	11



- **Tobacco Radio Show** – The Tobacco Talk radio show is a one-hour live program aired on Radio Lobo (KBBX 97.7 FM) every quarter. It is currently funded by a grant from Tobacco Free Nebraska and is hosted by Natalia Trinidad and Marcela Carvajal with invited special guests. This program is used to educate Spanish-speaking listeners on the dangers of tobacco and the benefits of smoke-free environments. The target audience is estimated to be 70,000-80,000 listeners per show.

- **Television Show** – Natalia Trinidad and Marcela Carvajal host a quarterly half hour TV program that connects directly to the Spanish-speaking community in the Omaha metro and surrounding areas. The shows are streamed online on Bonita Omaha’s YouTube channel and Facebook page as well as in the KPAO Cox Channel 22.



Marcela Carvajal and Natalia Trinidad hosting a show on Bonita Omaha

# Partnerships with Organizations and Campus Groups

## Bridge to Care (BTC)

Bridge to Care (BTC), an inter-professional, community-engaged, and student-led legacy project supported by the Center for Reducing Health Disparities at the University of Nebraska Medical Center (UNMC) under the leadership of Dr. Toure. BTC is the only UNMC Recognized Student Organization (RSO) with the direct aims of providing opportunities for students to interact and deliver health services and education to refugees in Omaha. BTC supports resettled refugees through biannual health fairs offering health education, screening, services from community partners (i.e., clinical practices, federally qualified health centers, state, and local public health), and UNMC students. Volunteers simultaneously develop cross-cultural competencies.

During the 2019-2020 academic year, Bridge to Care worked with over 50 community-based clinics and health care organizations, more than 50 students across all professions on the UNMC campus (College of Public Health, Medicine, Nursing, Pharmacy, and Allied Health), and Douglas County Health Department to engage and serve over 10,000 refugees. Programs provided were refugee youth mentoring sessions, health education sessions, health fairs, and personal protective equipment (PPE) distributions.



Volunteers from Bridge to Care (BTC) aiding refugees during the November 2020 Health Fair. Flu shots and personal protective equipment was provided.





PPE bags were distributed to refugees at the BTC Annual Health Fair



Bridge to Care group photo

## *Programs*

- **Health Education Sessions** – In 2020, a total of three health education sessions took place virtually with diverse refugee communities. Students were taught about U.S. health care system, mental health, diabetes, hygiene, Medicaid, bed bugs, medication safety, OTC drugs, and parenting education.
- **Mentoring Sessions** – In 2020, the mentoring program continued its partnership with Omaha Public Schools to conduct two resume writing sessions with youth refugees and others.
- **Health Fairs** – Students from all colleges of the University of Nebraska Medical Center (UNMC) and staff from the Center for Reducing Health Disparities, working with Bridge to Care, helped plan and carry the fall health fair in November 2020.
  - The Bridge to Care (BTC) Annual Fall Refugee Health Fair was held on November 7, 2020. In collaboration with Benson High School, Walgreens, and Methodist Health Care System, BTC held an outdoor health fair at the Benson High parking lot. More than 200 refugees in the Omaha area received flu shots, toiletries, foods, and personal protective equipment (PPE) (masks, gloves, and hand sanitizers). Dr. Toure worked with a few students from the college of public health, pharmacy, nursing, and medicine to facilitate the fair. Methodist Health Care System provided interpreters. Walgreens offered flu shots, MUNA box, and Calistus Myeloma Foundation provided food and toiletries.
  - From the fair evaluation, about 90% of the participants have attended BTC health fair before, 100% were satisfied, most spoken languages were Karen 38%, Karenni 37%, Burmese 10.5%. This year the only provided health service was the flu shot vaccination by Walgreens.
- **Personal Protective Equipment (PPE) Distributions** – Since the beginning of the COVID-19 pandemic, BTC collaborated with Douglas County Health Department to hold PPE drive for refugee and immigrant communities. Also, BTC teamed up with community partners (Islamic Center of Omaha, The Intercultural Senior Center, Yates Community Center, Restoring Dignity, The MUNA Box Project, the Good News Church, Quoc An Buddhist Temple, The Karen Society of Nebraska, Lutheran Family Services, Buoyant Family Services, the Somali Community Services, and Benson High School) to provide more than 50,000 PPEs to underserved communities.

Bridge to Care board members and the faculty advisor would like to thank the Omaha refugee communities and leaders, all volunteers, Methodist Health Care System, and Walgreens Pharmacists for their time, efforts, and enthusiasm to make a difference in the lives of our underserved communities.



BTC volunteers aiding refugees through the November 2020 Health Fair.



Walgreens pharmacists providing flu shots to refugees during the BTC Health Fair in November 2020

## Partnerships with Organizations and Campus Groups

Dr. Athena Ramos serves on the UNO Urban Studies Graduate Education Advisory Council and is a liaison to the Minority Health Disparities Initiative at UNL.

Dr. Dejun Su serves as a member of the College of Public Health's Leadership Council. He also serves as a member of the UNMC Library Advisory Committee Meetings. Dr. Su has been a member of the Douglas County Community Health Worker workgroup. In 2020, he also served as a member of the Planning Committee for the Community Health Worker Summit organized by Nebraska Department of Health and Human Services.

Dr. Su was the Chair of the Search Committee for new faculty recruitment at the Department of Health Promotion in 2020.

## International Partnerships

Dr. Drissa Toure continues to collaborate with the University of Gitwe in Rwanda on a project titled "Retrospective analysis of early life events and influence on adult health conditions: Effect of fetal programming among adult populations in Rwanda." The team is currently writing two manuscripts for publication.

In November 2020, Dr. Toure was invited to attend virtually the Second National Undergraduate Students Research Conference (NUSReC) in Oshogbo, Nigeria, organized by the Foresight Institute of Research and Translation, as the main guest speaker in the Public Health & Clinical Medicine Approach Sub-theme. Dr. Toure's presentation was focused on strategies to improve maternal, reproductive, and child health in African countries.

## Advocacy Activities & Professional Services

### Kenya Love

- Kenya Love is a board member for the Region VII Heartland Equity Committee. Each year members, which consist of Nebraska, Iowa, Kansas, and Missouri, plan and execute a Conference on Health Equity & Patient Centered Care.
- Kenya Love is a founding board member of the POC Collaborative Community Resource Center. The Center is an organization designed by and for BIPOC in Omaha, Nebraska. The Center is incubating under the Nebraska Enterprise Fund (NEF) and receiving development support from Create Campaign, Inc. (CC) out of Wichita, Kansas. The Center is an affirming environment that elevates collaboration, leverages community resources, and utilizes culturally based development models to empower entrepreneurs of color to achieve business success. The board of seven members is 83% Black or African American representing business, public health, philanthropy, housing, the legal profession, and most importantly, the individuals and businesses we serve. The POC Collaborative Community Resource Center is intentionally located within R/ECAP census tracts to provide place-based connection and support, programming, and resources to empower BIPOC, and to improve the economic conditions in which they live, work, and play.
- Kenya Love is on the Civic Nebraska's Summit planning committee. The goal of Civic Nebraska is to improve the civic health for all Nebraskans. Civic Health is a measure of well-being determined by social connectedness, community engagement, political involvement, and confidence in institutions and reflects the degree to which individuals participate and are represented in their communities. Kenya Love facilitated the Community Engagement focus group to provide more context on key facilitators of civic health to be included in the Civic Health Index 2020. A goal is to collaborate with Civic Nebraska by expanding representation of urban communities, including more representation of North Omaha residents by conducting an urban poll of civic health.
- Kenya Love serves on the board of the Black Family Health & Wellness. Kenya led a committee and worked in collaboration to put on the health fair that is centered right in the heart of North Omaha. The health fair brings together all healthcare systems to address health gaps and disparities in North Omaha. Over the past 20 years, the health fair has been a key point of access into healthcare, screenings, and other resources for the community.
- Kenya Love is a board member of the North Omaha Area Health Clinic.

## Athena Ramos

- Dr. Athena Ramos served on the UNMC Bias Assessment & Response Team (BART), UNMC Cultural Competency Review Committee, COPH Diversity Committee, and the COPH Latino Public Health Advisory Committee.
- Dr. Athena Ramos served on the PCORI Stakeholder Engagement Leadership Council for Bridging the Chasm between Pregnancy and Women’s Health over the Life Course project representing the National Alliance for Hispanic Health. She was an advisory board member for the Enhancing Supervisor’s Skills and Employer Policies to Promote and Protect the Health of Young Agricultural Workers project and the Migratory and seasonal Agricultural Workers and Health Research: Developing Capacity for Patient Centered outcomes Research project. She was also the co-chair of the Rural Occupational Health Committee for the International Society for Agricultural Safety & Health.
- Dr. Athena Ramos served on the Board of Directors for the Comunidad Maya Pixan Ixim, NCERA 216, and the International Society for Agricultural Safety and Health. She also serves on the advisory board for Omaha By Design.

### Awards and Honors

- Dr. Athena Ramos was recognized for Hispanic Heritage Month by KMTV Channel 3 as one of UNMC’s “Doctors fighting against COVID-19”.  
<https://www.3newsnow.com/news/moving-forward/hispanic-unmc-doctors-fight-against-covid-19>.
- Dr. Athena Ramos was appointed as a Fellow in the center for Great Plains, an interdisciplinary regional research and outreach center focused on the study and appreciation of people, cultures, and the natural environment of the Great Plains.
- Dr. Athena Ramos was recognized by the Union of Concerned Scientists as a “Science Defender” in December 2020 for contributions to transparency and telling the stories of meat processing plant workers’ experiences with COVID-19. See article:  
<https://www.ucsusa.org/resources/2020-ucs-science-defenders>



Dr. Athena Ramos and board members of the International Society for Agricultural Safety and Health

**Drissa Toure**

- Dr. Toure served as the Chair of the Election Committee of the Islamic Center of Omaha. Dr. Toure led the 2020 election and selected 12 new board members. He is working with the board to continue the Muslim Women’s Health Education series and the health fair.
- Dr. Toure served on Benson High School Health Professions Advisory Board.
- Dr. Toure served as a member of the Douglas County Health Department - Feto Infant Mortality Review (FIMR) team.
- Dr. Toure served as the Chair of the Foresight Institute of Research and Translation (FIRAT) Board.
- Dr. Toure served as a member of the Nebraska Partnership for Mental Healthcare Access (NEP-MAP) Steering Committee.
- Dr. Toure served on the Board of Directors of Nebraska Perinatal Quality Improvement Collaborative (NPQIC) and as a member of the Prematurity Steering Committee.

**Awards and Honors**

- Dr. Drissa Toure was the recipient of the Best Presenter Plaque given by the Foresight Institute of Research and Translation (FIRAT) at the Second National Undergraduate Students Research Conference (NUSReC) by Osun State University Oshogbo, Nigeria, held virtually.



## **Natalia Trinidad**

- Natalia Trinidad was elected to the Board of Directors for the Metro Omaha Tobacco Action Coalition (MOTAC).
- Natalia Trinidad served on the Public Health Association of Nebraska

## **Marcela Carvajal-Suarez**

- Marcela Carvajal-Suarez served as a member of the Metro Omaha Tobacco Action Coalition (MOTAC).

# Center for Reducing Health Disparities

## 2020 Community Sponsorships

Academy Health D&I  
13th Annual Conference

National Indian Health Board  
Virtual 2020 National Tribal Health Conference

One World Community Health  
2020 Milagro Dinner

Wakanda Arts, LLC  
One Kwanzaa Virtual 2020 Unity First

# Community Partnerships

- ♦ American Cancer Society
- ♦ American Heart Association
- ♦ American Lung Association
- ♦ American Psychological Association, Behavioral & Social Science Volunteer Program
- ♦ American Society for Public Administration
- ♦ Avenue Scholars
- ♦ Bellevue Public Schools
- ♦ Benson High School
- ♦ Boys and Girls Clubs of Omaha
- ♦ Boys Town
- ♦ Breast and Cervical Cancer Advisory Committee
- ♦ Building Healthy Futures
- ♦ Carl T. Curtis Health Education Center at Macy, NE
- ♦ Castelar Elementary School
- ♦ Catholic Charities– Juan Diego Center & Latina Resource Center
- ♦ Centro Hispano de Columbus
- ♦ Charles Drew Health Center
- ♦ City Sprouts/City Sprouts South
- ♦ Coalition for a Stronger Nebraska
- ♦ College of Saint Mary
- ♦ Comité Latino de Schuyler
- ♦ Community Alliance
- ♦ Compassion in Action/RAW DAWGS Youth Gang Prevention Program
- ♦ Comunidad Maya Pixan Ixim
- ♦ Connoisseur Media/Radio Lobo-97.7 FM
- ♦ Consulate of Mexico
- ♦ Creighton University HS MACA HCOP Students
- ♦ Creighton University Latino Student Association (CULSA)
- ♦ Douglas County Department of Corrections
- ♦ Douglas County Health Department
- ♦ Eastern Nebraska Community Action Partnership (ENCAP)
- ♦ El Museo Latino
- ♦ El Perico Newspaper
- ♦ Empowerment Network
- ♦ Fontenelle Forest
- ♦ Girls Inc.
- ♦ Heartland 2050
- ♦ Heartland Workers' Center
- ♦ Immigrant Legal Center
- ♦ Inclusive Communities
- ♦ Intercultural Senior Center
- ♦ Islamic Center of Omaha (ICO)
- ♦ Justice for Our Neighbors
- ♦ Latin Media Network, TV Latina
- ♦ Latinas Unidas
- ♦ Latino Center of the Midlands
- ♦ Latino Leaders High School Clubs
- ♦ Latino Peace Officers Association (LPOA)
- ♦ Learning Community Center of South Omaha
- ♦ Live Well Omaha
- ♦ Malcolm X Memorial Foundation
- ♦ Metro Omaha Tobacco Action Coalition (MOTAC)
- ♦ Mujeres y Valores
- ♦ My Sisters Keeper
- ♦ National Alliance for Hispanic Health
- ♦ National Alliance on Mental Illness
- ♦ National Association of the Advancement of Colored People (NAACP) Omaha Branch
- ♦ National Coalition of 100 Black Women Greater Omaha Chapter
- ♦ National Latino Tobacco Control Network
- ♦ National Network for LGBT Health Equity
- ♦ Nebraska Action Coalition–Future of Nursing
- ♦ Nebraska Corrections Youth Facility
- ♦ Nebraska Department of Health & Human Services, Maternal & Child Health Program
- ♦ Nebraska Department of Health & Human Services, Office of Health Disparities and Health Equity, Division of Public Health
- ♦ Nebraska Department of Labor
- ♦ Nebraska Families Collaborative
- ♦ Nebraska Hispanic Chamber of Commerce
- ♦ Nebraska Medicine Fontenelle Clinic
- ♦ Nebraska Migrant Action Coalition
- ♦ Nebraska Migrant Education Program
- ♦ Nebraska Tobacco Disparities Network
- ♦ New Era Baptist Church Convention
- ♦ No More Empty Pots
- ♦ North Omaha Area Health
- ♦ North Omaha Community Care Council
- ♦ North Omaha Neighborhood Association (NONA)
- ♦ Omaha 360
- ♦ Omaha City Planning Department
- ♦ Omaha Community Foundation
- ♦ Omaha Healthy Kids Alliance
- ♦ Omaha Housing Authority
- ♦ Omaha Police Department
- ♦ Omaha Public Library
- ♦ Omaha Public Schools, African American Achievement Council & Latino Academic Achievement Council
- ♦ Omaha Public School District Office of Community, School & Family Engagement
- ♦ Omaha YMCA
- ♦ One World Community Health Centers
- ♦ Proteus
- ♦ Public Health Association of Nebraska
- ♦ Refugee Empowerment Network
- ♦ Refugee Health Collaborative Region 5 and 6 Behavioral Healthcare Siena
- ♦ Francis House
- ♦ South Omaha Community Care Council
- ♦ South Omaha Neighborhood Alliance
- ♦ Susan G. Komen Foundation, Nebraska
- ♦ Tobacco Free Nebraska
- ♦ Tobacco Free Sarpy
- ♦ UNO, Office of Latino Latin American Studies (OLLAS) US Department of Housing and Urban Development, Omaha Office
- ♦ Women's Center for Advancement

## **(NEW) Community Partnerships**

- ACLU Nebraska
- Bonita Omaha, KPAO Community Television
- Mundo Latino Newspaper
- Nebraska Appleseed
- Rural Community Workers' Alliance
- St. Luke's Lutheran Church
- UNL Extension
- The Wellbeing Partners

## Community Engagement Presentations

**Carvajal, M., Ramos, A.K. & Trinidad, N.** *Mental Health in times of social distancing.* Public webinar, March 27, 2020.

**Carvajal, M.** *NIH All of Us research program.* UNL Extension, Grand Island, NE., June 17, 2020.

**Carvajal, M.** *NIH All of Us research program.* UNMC Student Association for Global Health (SAGH), Omaha, NE., September 30, 2020.

**Carvajal, M. & Trinidad, N.** *Health disparities impacting Hispanic/Latino communities in Nebraska.* Creighton University HS-MACA, Common Ground Series, Omaha, NE., November 13, 2020.

**Ramos, A.K.** *Diversity and Inclusion in Omaha.* TV segment feature in conjunction with Union Pacific and Blueprint Nebraska. Available at [https://www.ketv.com/article/the-importance-of-diversity-and-inclusion-in-omaha/32674025?fbclid=IwAR0wJIsLd95kkgV9bWmGpza-fDvlAPrp\\_dA-BnFffUF3r3sfAyesUZxM3gc](https://www.ketv.com/article/the-importance-of-diversity-and-inclusion-in-omaha/32674025?fbclid=IwAR0wJIsLd95kkgV9bWmGpza-fDvlAPrp_dA-BnFffUF3r3sfAyesUZxM3gc)

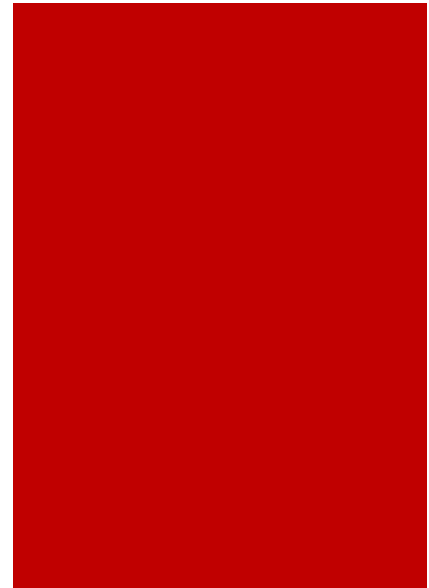
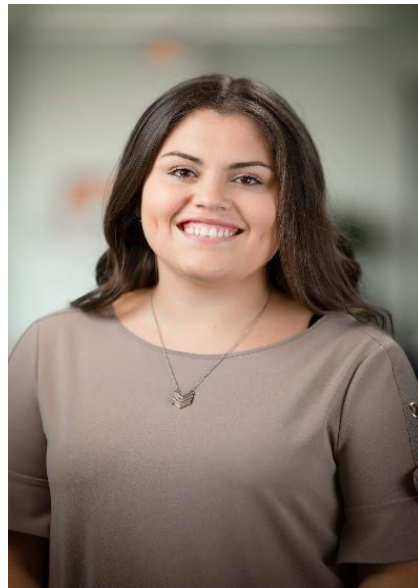
**Ramos, A.K.** *Latino-focused responses to COVID-19.* Presentation for the Nebraska Hispanic Chamber of Commerce, May 5, 2020.

**Ramos, A.K.** *Local tobacco control education and assessment strategies.* T.E.A.M. Coalition Meeting, August 27, 2020.

**Ramos, A.K.** *Race and public health.* Inclusive Communities' Table Talk, October 27, 2020.

**Trinidad, N., Carvajal, M., & Ramos, A.K.** *Tobacco and ENDS point of sale advertising in Omaha.* South Omaha Community Care Council Networking Meeting, November 18, 2020, Omaha, NE.

# Education and Scholarship



## **Courses Offered by CRHD Faculty**

### **Introduction to Maternal and Child Health - CPH 546/HPRO 880**

Dr. Toure taught the course CPH 546 - HPRO 880 Introduction to Maternal and Child Health during Spring 2020 (online) and Fall 2020 (campus-hybrid).

This course is an introduction to the public health problems affecting the health and well-being of women, newborns, children, and families. The course investigates the biological, epidemiological, economic, behavioral, and social characteristics that are unique to the health and well-being of women, their offspring, and families. Students explore the different contexts that influence national and global MCH as well as intervention and policy strategies that optimize MCH. This course also promotes MCH leadership through the integration of core MCH content, critical competencies, and skill development.

### **Planning and Evaluation**

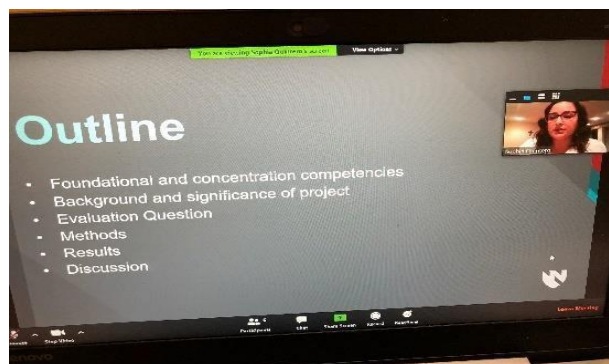
Dr. Su taught the course CPH 514-HPRO 814 Planning and Evaluation during Spring 2020 and Fall 2020 with over 40 students enrolled in the course.

This course is designed to prepare the graduate student, professional student, or fellow to apply multi- leveled evidence-based policy and program approaches to improve public health. The course will guide students through planning and evaluating the impact of public health strategies based on the reach, effectiveness, scalability, implementation quality, and sustainability of these approaches in complicated and complex systems.

## Student Advising

Dr. Athena Ramos served as the MPH preceptor for Krista Winter. Dr. Ramos is also currently advising three MPH students and one PhD student.

Dr. Athena Ramos served on six MPH student capstone committees: Abdoulaziz Alpdoulaye, Alyssa Damke, Isrrael Garcia, Shelby Larson, Sophia Quintero, and Tanner Wetzel. Dr. Ramos also serves on one PhD dissertation committee.



Example of virtual advising session

Dr. Dejun Su mentored or advised the following students in their research work or degree programs in 2020: Na-Omi Hassane Dan Karami, Thao Mai-Thao Nguyen, Anna Norton, Rebecca Hiebert, Jennifer Andersen, Khalid Alshehri, Jessica Pahwa, Aiden Quinn, Gaurav Kumar, Jennifer Andersen, Justin Chen, Oliver Ramirez-Gutierrez, Jessica Ern, Dylan Scoggins, Yi Du, Mariam Taiwo, and Zijian Qin.

Under Dr. Drissa Toure's supervision, Kumar Gaurav, Jessica Ern, and Jessica Pahwa worked on the Pediatric Mental Healthcare Access – Community Level Screening. They recruited and interviewed 53 participants and wrote a report. The team is working on three manuscripts.

Dr. Toure worked with Kumar Gaurav and Cady Walker to write and publish a manuscript, "Perspectives of African American and Hispanic Families Regarding Parenting Education. International Journal of Birth & Parent Education. "

Dr. Toure supervised and mentored Mai Thao Nguyen, a medical and public health student, to work on a manuscript, "Correlates of Betel Nut Chewing among Burmese Refugees in Nebraska." The manuscript is under review. Dr. Toure is currently serving as Capstone Chair for Mai Thao Nguyen.

Dr. Toure served on the Capstone Committee of Shardae Sims, a Health Promotion MPH student.

Dr. Toure served as a faculty advisor for the Bridge to Care Program (BTC) program, an interdisciplinary student-run organization at the University of Nebraska Medical Center.

Kenya Love was the preceptor for Than Htut Win's advanced practical experience (APEX) for the Faith Based Health Promotion Pilot Project and Black Family Health & Wellness Association.

## Campus Collaboration

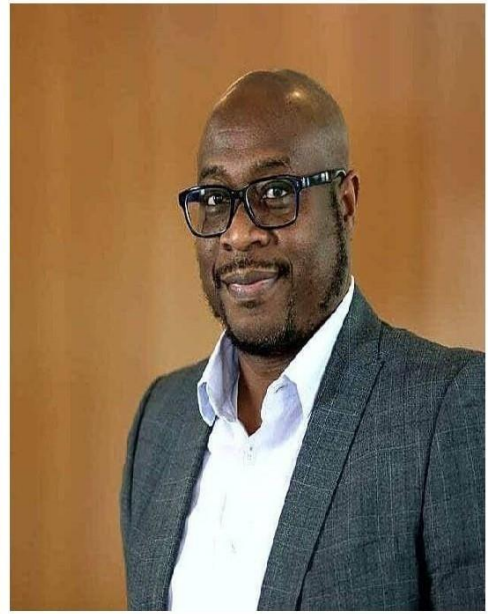
Dr. Athena Ramos serves on the UNO Urban Studies Graduate Education Advisory Council and is a liaison to the Minority Health Disparities Initiative at UNL.



## Educational Presentations & Guest Lectures

- **Carvajal, M.** *NIH All of Us research program*. Guest lecture for UNO LLS 3900, Omaha, NE, December 3, 2020.
- **Molina, D.** *Oral health among Latinos*. Guest lecture for UNO LLS 3900, Omaha, NE, October 8, 2020.
- **Ramos, A.K.** *Community welcoming and integration in rural South Dakota*. Guest lecture for COPH HPRO 970, Omaha, NE, March 9, 2020.
- **Ramos, A.K.** *Public health leadership 3.0 and advocacy for community change*. Guest lecture for UNO PHHB 4950, Omaha, NE, March 31, 2020.
- **Ramos, A.K.** (2020). *Work as a social determinant of health: Vulnerable workers in the Midwest*. Quarantining with OLLAS, Omaha, NE, May 22, 2020. Available at: <https://youtu.be/-vnRD2nFC6A>
- **Ramos, A.K.** *A career in public health: Service to communities*. Invited presentation for the UNMC Summer Health Professions Education Program (SHPEP), July 8, 2020.
- **Ramos, A.K.** *Migrant and immigrant farmworker health in the Midwest*. Guest lecture for UNMC COPH ENV 811, July 14, 2020.
- **Ramos, A.K.** *Linking community development practice and public health*. Guest lecture for Clemson University FCS 830, September 11, 2020.
- **Ramos, A.K.** *Breast health education and services among Latinos*. Guest lecture for UNMC GEN 708, December 10, 2020.
- **Su, Dejun** “Life Expectancy Calculator and Mapping for Nebraskans” presented at the panel “Social and Racial Inequities in Health” at the 55<sup>th</sup> Actuarial Research Conference, Lincoln, NE.
- **Su, Dejun** “Life Expectancy Calculator and Mapping for Nebraskans” invited to present at the 2020 Nebraska Minority Health Conference, York, NE.
- **Su, Dejun** “A Statewide Assessment of the Community Health Worker Workforce in Nebraska” invited to present at the 2020 Nebraska Community Health Worker Summit, York, NE.

- **Toure, D.** “A Qualitative Exploration of Safe Sleep Practices to Prevent Sudden Unexpected Infant Death, October 2020.
- **Toure, D.**, ElRayes, W., Barnes-Josiah, D., Hartman, T., Klinkebiel, D., Baccaglini, L. (Virtual Conference) “*Human placental epigenetic modifications and preterm birth*”. Epigenetic Symposium – Maternal-Fetal Crosstalk: Harmony vs. Conflict, October 1-3, 2020.
- **Toure, D.**, Ouattara B. Strategies to Improve Maternal, Reproductive and Child Health in African countries (Zoom Conference). Second National Undergraduate Students Research Conference (NUSReC) organized by the Foresight Institute of Research and Translation, Oshogbo, Nigeria, November 30 – December 4, 2020.
- **Dr. Toure**, for the second time, was the guest speaker at the graduation of Marriage Counselors organized by M-Solution Consulting International Ltd at the Islamic Center Hall of the University of Lagos Mosque, Akoka, Lagos.
- **Toure, D.**, Ouattara, B. (Virtual Conference) Improving Newborn and Infant Health in Developing Countries. Fifth International Health Sciences Research Congress, Settat, Morocco, June 2020.



# Research



# Research

## Faculty Assistance & Research Support to Develop and Implement Protocols and Proposals

The Center routinely works with faculty from across UNMC and other University of Nebraska campuses to develop research protocols that are community, cultural, and linguistically competent. The Center assists as a primary partner with faculty and departments in the development stage of research proposals.

Furthermore, the Center provides an English-Spanish translation service for IRB-approved research documents. In 2020, the Center translated 6,225 words, producing a \$1,556 value to University investigators and community partners.

## Research Projects and Grants

**Concerns and perceptions of COVID-19 among meatpacking plant workers** - In response to the current pandemic and its disparate impact on agri-food system workers, the Center conducted a rapid-response survey to assess meatpacking plant workers' concerns and perceptions about COVID-19. There were over 600 hundred respondents from Nebraska, Kansas, Iowa, and Missouri. The results from this study have been used by local organizations to advocate for better workplace protections and community supports for these essential workers. The results of the study were featured on the front page of the Omaha World Herald: [https://omaha.com/state-and-regional/unmc-survey-meatpacking-plants-have-made-safety-improvements-but-more-changes-needed/article\\_99cbbec4-2766-593d-b21c-a6c7ac50f444.html](https://omaha.com/state-and-regional/unmc-survey-meatpacking-plants-have-made-safety-improvements-but-more-changes-needed/article_99cbbec4-2766-593d-b21c-a6c7ac50f444.html) The results were also featured in numerous other media outlets. Additionally, Dr. Athena Ramos was interviewed by the Wall Street Journal and Food and Environment Reporting Network (FERN).

### UNMC survey: Meatpacking plants have made safety improvements, but more changes needed

Our team also developed specific educational materials for meatpacking workers to protect themselves both at work and outside of work from COVID-19. These materials were available in English, Spanish, French, Arabic, and Vietnamese. See: <https://www.unmc.edu/healthsecurity/covid-19/meatprocessing/index.html>.

Project team members included: Athena Ramos (PI), Marcela Carvajal, Natalia Trinidad, Diana Molina, and Sophia Quintero.

**UNMC**  
UNIVERSITY OF NEBRASKA  
MEDICAL CENTER

## Protecting yourself from COVID-19 at work

### Use a face mask at all times

- Avoid touching the front of the mask and don't push the mask down under your chin and let it hang around your neck.
- Take off the mask carefully during lunch to eat. Remove by the ear loops and place on a paper towel with the outside of mask facing down.
- Change your mask everyday and it may need to be changed more frequently if it gets dirty or wet.

### Wash or disinfect your hands

- Wash your hands for 20-30 seconds
- Before putting on your mask and after taking it off
- Before you eat
- After you take off your gloves or use the restroom

### Avoid touching your face

- Avoid touching your eyes, nose, and mouth
- Use the inside of your elbow or a tissue when you cough or sneeze.

### Know your employer's policies

- Will I be informed if a coworker near me tests positive for COVID-19?
- Will I be paid if I get sick or need to be quarantined at home?
- If I am sick, when can I return to work?

### Follow social distancing rules

- Follow the flow of traffic through the plant like in the hallways and in the cafeteria
- Avoid getting together in large groups (e.g., during the screening process when entering the plant or in the locker rooms)

Obtain information from reliable sources like the CDC [www.cdc.gov](http://www.cdc.gov) and the WHO [www.who.int](http://www.who.int)

**UNMC**  
UNIVERSITY OF NEBRASKA  
MEDICAL CENTER

## Protecting yourself from COVID-19 outside of work

### Avoid carpooling if possible

- Limit the number of people in the vehicle
- Make sure that there is adequate space between people in the vehicle
- Use a mask at all times when there are other people in the vehicle
- Improve air flow in the car by opening the window or placing air conditioning on non-recirculation mode

### Follow social distancing rules

- Maintain 6 feet of distance between you and other people in public places
- Avoid visiting family members and friends in their homes
- Limit grocery shopping and other errands to once a week

### Wash your hands and disinfect common areas in the house

- Wash your hands using soap and water or an alcohol-based hand sanitizer with at least 60% alcohol
- Clean and disinfect frequently touched objects and surfaces in the house

### If someone in your home is sick, practice everyday preventive actions

- Keep the ill person in a separate room away from others in the household
- Follow recommended precautions and monitor your own health
- Keep surfaces disinfected
- Avoid sharing personal items
- Stay informed about what is happening in your community

### Know the symptoms

Symptoms may appear 2-14 days after exposure to the virus. If someone has some or all of the following symptoms, they may have COVID-19:

- Cough
- Shortness of breath or difficulty breathing
- Fever or chills
- Repeated shaking with chills
- Muscle pain
- Headache or sore throat
- New loss of taste or smell

### What should I do if I have symptoms of COVID-19?

- Stay home and away from others in the house
- Notify your work if your schedule needs to change
- Call your local public health department, your doctor, or a clinic or get in touch with a community health worker
- Find a testing site and get tested

Obtain information from reliable sources like the CDC [www.cdc.gov](http://www.cdc.gov) and the WHO [www.who.int](http://www.who.int)

## Feasibility, Acceptability, and Preliminary Impact of a mHealth Intervention on Cardiorespiratory Fitness in a Rural Hispanic Adult Population

The Center is collaborating with Dr. Sheri Rowland from the UNMC College of Nursing on this study that is funded by CENTRIC. The purpose of this study is to: (1) evaluate the feasibility and usability of a self-management mHealth intervention; (2) determine preliminary impact of the self-management mHealth intervention by comparing the intervention and enhanced usual care; and (3) describe acceptability of the self-management mHealth intervention.



Project team members include Sheri Rowland (PI), Athena Ramos (Co-Investigator), Natalia Trinidad, and Sophia Quintero.

## Feedyard Safety Training Program

The Center is collaborating with Dr. Aaron Yoder on this study. The purpose of the study is to: (1) develop and implement a comprehensive feedyard safety and health training program and (2) evaluate the efficacy of the comprehensive feedyard safety and health training program. As part of the study, we are developing safety training modules for the Feedyard 15, the top fifteen hazards found on cattle feedyards. We have also convened a Feedyard Safety Advisory Board, comprised of industry stakeholders in conjunction with the annual Nebraska Cattlemen Convention and mid-year meetings.

## Health and Safety Among Immigrant Cattle Feedyard Workers in the Central States Region

This project seeks to: (1) Systematically explore and describe the health status and occupationally related risks among Latino immigrant cattle feedyard workers in Nebraska and Kansas; (2) Test the Ecological Stress-based Model of Immigrant Health and Safety, evaluating if workers' intrapersonal mechanisms (i.e., stress appraisal, ethnic identity, and cultural values) mitigate culture-related occupational stress and negative health outcomes; and (3) Review, develop, evaluate, and disseminate bilingual (English/Spanish) health and safety educational and policy materials designed specifically for cattle feedyard operations.

Our team completed data collection with a total of 243 research interviews with immigrant cattle feedyard workers in both Nebraska and Kansas between May 2017-February 2020. We are working on data analysis and developing a series of journal articles to describe job-related health and safety risks among Latino immigrant cattle feedyard workers.

We have started to develop materials from this project including a bilingual English-Spanish feedyard safety picture glossary, labor and safety information for workers, and health education materials. To that end, we completed a bilingual flyer on farmworkers' rights in Nebraska. The flyer is available online at <https://www.unmc.edu/publichealth/feedyard/workforce/Resources-Recursos/worker-rights.html>. Our team has also contributed content to a feedyard 15 supplemental module on stress management. Early in the spring of 2020, we pivoted our focus to COVID-19 in an effort to be proactive in responding to the ongoing pandemic and reduce transmission among agricultural workers and their families. Our team developed and disseminated two infographics related to COVID-19 – one focused on preventive strategies and the other on managing anxiety related to the pandemic. These infographics were promoted in Spanish through Facebook and reached over 64,000 people. We also created three Spanish video recordings for feedyard workers and their families on the following topics related to COVID-19: healthy eating, physical activity, and mental health in the time of social distancing. All COVID-19 related materials are available online at: <https://www.unmc.edu/publichealth/feedyard/workforce/Resources-Recursos/COVID-19.html>



Infographic distributed in Spanish to feedyard workers about preventive strategies and managing pandemic-related anxiety

### PAGO

- ☑ Usted tiene el derecho de recibir un salario mínimo de \$7.25 por hora por cada hora que trabaja, pero como trabajador agrícola no tiene derecho a pago por las horas que trabaje si son más de 40 horas en una semana.
- ☑ Su empleador debe pagarle los días de pago regulares. El empleador debe elegir pagarle más a menudo, pero deben pagarle los días de pago regulares elegidos.
- ☑ Su empleador debe darle una declaración por escrito que diga cuánto ganó y cómo se ganó (por ejemplo, el número de horas trabajadas y el pago por hora) y cualquier deducción. La declaración también debe tener el nombre y la dirección del empleador, así como la razón y la cantidad de cada deducción de su salario.
- ☑ Si no tiene un contrato de trabajo escrito, escriba lo que usted y el empleador discutieron y acordaron verbalmente.

La División de Salarios y Horas Laborales del Departamento de Trabajo de los Estados Unidos ayuda a todos los trabajadores en los Estados Unidos y hace cumplir la ley sin tener en cuenta el estatus migratorio de un trabajador. Los servicios son gratuitos y confidenciales. Es ilegal que usted sea despedido o tomado en represalia por contactarlos o ejercer sus derechos. Para más información: 1-866-467-9243 | [www.wagehour.dol.gov](http://www.wagehour.dol.gov)

### CONDICIONES DE TRABAJO Y ENTRENAMIENTO SEGUROS

- Bajo la ley federal, usted tiene derecho a un lugar de trabajo seguro.
- ☑ Usted tiene derecho a adquirir seguro y a condiciones de trabajo que no representen un riesgo de salud grave.
  - ☑ Usted tiene derecho a ser entrenado en un idioma que entienda. La capacitación debe incluir la información de los

Our team has presented research findings at the Midwest Rural Agricultural Safety and Health Conference and the Work, Stress, and Health Conference. We have also presented findings through various guest lectures at the University of Nebraska Medical Center, Midwest Rural Agricultural Safety and Health Conference, and the University of Missouri. The project PI facilitated a panel discussion at the International Society of Agricultural Safety and Health (ISASH) Annual Conference on the global impact of COVID-19 on agriculture. Team members have participated in professional development activities including completing the OSHA 10-hour general industry safety course, Safety for the Supervisor, the Diplomado de Salud Ocupacional (community health worker certificate on occupational health) through the University of California Berkley's Health Initiative of the Americas, ISASH annual conference, workshops on topics such as safety climate and occupational health psychology, and various webinars throughout the year. We continue to build relationships with organizational partners including Nebraska Cattlemen, University of Nebraska Extension, AgriSafe Network, Nebraska Migrant Education Program, Proteus, Nebraska Department of Labor, Nebraska Appleseed, and Legal Aid of Nebraska.

Project team members include: Athena Ramos (PI), Gustavo Carlo, Marcela Carvajal, Natalia Trinidad, Axel Fuentes, Rodrigo Gamboa, Casper Bendixsen, and Meredith McGinley.

**2020 Midwest Rural Agricultural Safety and Health Conference** *Rising to New Challenges, Nov. 17-20.*

ANYTIME TUESDAY NOV. 17 WEDNESDAY NOV. 18 THURSDAY NOV. 19 FRIDAY NOV. 20

**Athena Ramos Poster**

***Work-related opportunities and safety behaviors among immigrant cattle feedyard workers with a TN visa***

Athena K. Ramos, PhD, MBA, MS, CPM, University of Nebraska Medical Center; Marcela Carvajal-Suarez, MPH, University of Nebraska Medical Center

aramos@unmc.edu

Dr. Athena Ramos is an Assistant Professor in the Department of Health Promotion and is affiliated with the Center for Reducing Health Disparities and the Central States Center for Agricultural Safety and Health (CS-CASH) at the University of Nebraska Medical Center (UNMC) in Omaha, Nebraska. She leads a Latino outreach and engagement team and serves as principal investigator for a number of community-based health and social research and education initiatives in such areas as occupational health and safety, immigrant integration, and community well-being.

**Learning objective:**  
To discuss how TN visa program is used on cattle feedyards and describe the demographic and health characteristics of TN visa holders.

**Discuss this presentation with the authors on Wednesday, November 18 from noon - 12:30 on the Zoom Live-stream**

Abstract

Click Thumbnail to View:



## Musculoskeletal Pain and Cardiovascular Risk among Hispanic/Latino Meatpacking Laborers

The Center is collaborating with Dr. Sheri Rowland from the UNMC College of Nursing on this study. The purpose of this study is to: (1) describe the prevalence, type, and impact of multiple chronic conditions among low-fit Hispanic/Latino meatpackers who have occupation-related musculoskeletal pain in Nebraska and (2) using a community-based research approach, determine perceptions of occupational, physical, social, and service conditions affecting health among low fit Hispanic/Latino meatpackers with occupation-related musculoskeletal pain. We completed data collection for this project in February 2020.

Project team members include Sheri Rowland (PI), Athena Ramos (SI), Brianna Pickett, Marcela Carvajal, Natalia Trinidad, Sophia Quintero, and Diana Molina.

## Optimizing community efforts to improve physical activity in aging Hispanic/Latino adults

The Center for Reducing Health Disparities, Dr. Danae Dinkel (UNO), Dr. Julie Blaskewicz Boron (UNO), and the Latino Center of the Midlands partnered to apply for a UNMC Vice Chancellor of Research Health Disparities pilot grant and were awarded the grant. The goals of the project are to identify program components and test the feasibility of an intergenerational dance program that will impact socioecological and social cognitive constructs to improve levels of physical activity among Hispanic/Latino older adults. Our team has conducted a series of focus groups with older adults, youth, parents, and community stakeholders, and we will be launching a survey of Hispanic/Latino older adults in 2021.



### Physical Activity Focus Group

**Adults:** 08-23-2020 | 10:00am-11:30am or 4:30pm-6:30pm | Virtual Discussion  
**Children:** 08-18-2020 | 4:00pm-6:00pm | Virtual Discussion  
**08-17-2020 | 1pm-2pm | Virtual Discussion**

The University of Nebraska Medical Center invites you to participate in a research study about physical activity across different age groups. We would like to learn about your experiences and your ideas for how to promote physical activity among Latinos.

**Adults and children are needed for a focus group discussion.**

There is no charge to participants, and you will be compensated for your time.

For more information contact us below:

<b>UNMC</b> Natalia Trinidad (402) 5528819 Natalia.Trinidad@unmc.edu	<b>Latino Center</b> Rosana Perm (402) 7332720 Rperm@latino-center.org
---	---

IRB# 42019-20-01\*



Project team members include Athena Ramos (PI), Danae Dinkel (Co-Investigator), Julie Blaskewicz Boron (Co-Investigator), Marcela Carvajal, Natalia Trinidad, Sophia Quintero, Diana Molina, Karen Schmeits, Viridiana Almanza, and Craig Howell.

## Tobacco and E-Cigarette Point of Sale Advertising Assessment

Our team is conducting an assessment of the tobacco and e-cigarette retail environment and public perceptions regarding advertising and promotion in the Omaha area through our collaboration with the Metro Omaha Tobacco Action Coalition (MOTAC). Originally, we started to conduct retail assessments both inside and outside tobacco retail establishments, but due to the COVID-19 pandemic and safety concerns mainly external observations were obtained from the 200 retailers visited. In 2021, we will launch a survey of Douglas County residents to learn more about their perceptions regarding advertising and promotion.



Project team members include Athena Ramos (PI), Marcela Carvajal, Natalia Trinidad, and Karen Schmeits.

## Whole-of-Community Systems Intervention for Youth Population Physical Activity

The goal of this project is to determine the impact of a capacity-building intervention on multi-level community systems outcomes as well as implementation systems drivers of multi-level youth population physical activity in rural communities.

Project team members include David Dzewaltowski (PI), Brandon Grimm (Co-Investigator), Athena Ramos (Co-Investigator), Richard Rosenkranz (Co-Investigator), Greg Welk (Co-Investigator), Regina Idoate, Marisa Rosen, Sara Norgales, Ann Essay, and many COPH and undergraduate students.

## Welcoming and Community Integration in Rural South Dakota

The purpose of this study is three-fold: (1) to assess integration, sense of community, and knowledge of and access to community and workplace resources among immigrant agricultural workers; (2) to assess sense of community and attitudes towards immigrants among rural community residents; and (3) to explore opportunities for community development and integration in South Dakota. It was commissioned by the Central Plains Dairy Foundation.



Project team members include Athena Ramos (PI), Marcela Carvajal, Natalia Trinidad, Sophia Quintero, and Sarah Stanislav

## North Omaha Community Care Council (NOCCC)

The purpose of the North Omaha Community Care Council (NOCCC) is to improve the health and well-being of adults, children, and families who work, live, worship, and conduct business in the North Omaha community. Center staff continues to facilitate the NOCCC general meetings, most of them virtual, due to the COVID-19 pandemic. Dr. Keyonna King serves on the Board of Directors.

Dr. Keyonna King and the Center staff partnered with NOCCC to execute CARES Act funded COVID-19 project to educate and provide resources to the North Omaha community during the pandemic.

Dr. Keyonna King secured a COVID-19 grant via the College of Public Health to assess the knowledge, beliefs, and attitudes regarding COVID-19 and vaccination.

## Research Projects and Grants

### **“A Community Assessment to Recommend and Optimal Plan for COVID-19 Vaccination in Nebraska” (PI: Dejun Su)**

Funded by UNMC College of Public Health 2020 COVID Response Grant and Nebraska Department of Health and Human Services

November 1, 2020-October 31, 2021

Total Budget: \$92,568

The purpose of this project is to conduct a statewide assessment of awareness, willingness, and capacity for receiving COVID-19 vaccines among Nebraskans and inform vaccination planning to address related disparities.

Role: PI with 20% of efforts

### **“Geriatric Workforce Enhancement Program” (PD: Jane Potter)**

Funded by Health Resources and Services Administration (HRSA) grant

July 1, 2019-June 30, 2024

Total budget for evaluation: \$975,002

The purpose of this project is to develop a health care workforce in the Omaha metropolitan area that maximizes patient and family engagement and improves health outcomes for older adults by integrating geriatrics with primary care.

Role: Dejun Su, Co-I with 3% effort

### **Program Evaluation for the “Nebraska Pediatric Mental Health Care Access Program” (PD: Sara Morgan)**

Funded by Health Services Research Administration

February 1, 2019-September 30, 2023

\$2,225,000

The Center for Reducing Health Disparities contracted with the Nebraska Department of Health and Human Services to conduct data management and program evaluation for the Nebraska Pediatric Mental Health Care Access Program

Role: Dejun Su, Sub-contract PI with 30% effort

## **Understanding and growing the role of CHW in improving outcomes for maternal and child populations (PI: Su)**

Funded by the Nebraska Title V Maternal and Health Block Grant

July 31, 2020-July 30, 2021

\$44,469

The purpose of this project is to conduct secondary data analysis of the CHW workforce statewide assessment data to understand how CHWs can improve maternal and child health in Nebraska and assess rural-urban disparities.

Role: PI with 20% effort

## **“Sustaining the Reach of a Scalable Weight Loss Intervention through Financial Incentives: an Exploratory Randomized Controlled Trial” (PI: Su)**

2019 Great Plains IDeA-CTR Pilot grant

July 1, 2019-June 30, 2021

\$50,000

The primary goal of the proposed study is to assess the comparative effectiveness of the use of different financial incentives in sustaining the reach of an established, community-based, technology-facilitated weight loss program in a primary care setting.

Role: PI

## **Fetal Programming Project - Rwanda**

Retrospective analysis of early life events and influence on adult health conditions: Effect of fetal programming among inhabitants of Gitwe, Ruhongo District, Rwanda University of Nebraska Global Strategy, and International Initiatives. The purpose is to assess offspring's adulthood diseases related to early life events from fetal development. A collaborative proposal between the university of Nebraska Medical, USA and the University of Gitwe, Rwanda.

(PIs: Toure and Adedeji)

## **Generation Xchange Omaha (Gen X Omaha) Site Visit to Los Angeles, CA**

On March 8-10, Dr. Keyonna King, Ms. McLitta Wilson (principal at Lothrop Magnet Elementary), and Aaron Bowen (executive director at Eastern Nebraska Community Action Partnership) traveled to Los Angeles, California for a site visit of Generation Xchange Los Angeles (Gen X LA). This is an intergenerational program designed to increase regular physical activity and improve cognitive stimulation in older adults while simultaneously improving reading scores and decreasing behavioral issues for elementary students in K-3<sup>rd</sup> grade. During the site visit the community-academic partner team visited with the Gen X LA community and academic partners and learned best practices for program implementation. In addition, the team was able to visit two schools currently implementing the program as well as interact with the older adult mentors at each school site to learn about the challenges and benefits of the program. The older adult mentors along with the program staff also provided recommendations for how to adapt the program in Omaha



The Gen X Omaha team visited Board District 1 Office to speak with the Los Angeles Unified School staff which supports the Gen X LA Program. All Schools currently implementing Gen X LA are within Board District 1 service area.



The Gen X Omaha team visited 54th Street Charter School – one of the elementary schools implementing Gen X LA program.



Ms. McLitta Wilson and Aaron Bowen entering 74th Street Elementary School – the second site visited by the Gen X Omaha team.



MeLitta Wilson at the 54th Street Elementary School Library



Mural in the school corridor at the 54th Street Elementary School



Aaron Bowen and Dr. Keyonna King at 54<sup>th</sup> Street Elementary School site visit





From left to right: MeLitta Wilson, Dr. Keyonna King, and Aaron Bowen visiting with older adult mentors at 54<sup>th</sup> Street Elementary School.

## **(NEW) North Omaha Community Care Council (NOCCC) COVID-19 Response: Keeping Our Community Protected**

The purpose of this proposed project was to provide education and resources (e.g., face coverings) to North Omaha residents during the COVID-19 pandemic.

We achieved five objectives:

- 1) Be a conduit to subsidize the distribution of resources between key North Omaha service providers' and residents' greatest areas of need.
- 2) Identify specific community needs and concerns related to COVID-19 for North Omaha residents by zip code (68104, 68110, and 68111).
- 3) Design and disseminate 6 population-specific PSAs on COVID-19 informed by preliminary data from our administered surveys.
- 4) Determine data trends of community needs and concerns through ongoing survey pulse checks and redistribute resources as needs change.
- 5) Disseminate survey findings to NOCCC member organizations, Douglas County Health Department, and the North Omaha community, including residents, non-profit organizations, etc.

The Center staff, led by Dr. Keyonna King, took the lead in accomplishing objectives 2, 4, and 5. Our staff also assisted with distributed food boxes during the monthly Clair Cares Food Pantry while simultaneously asking North Omaha community residents to complete the NOCCC COVID-19 Survey to address the objectives.



Pastor Portia Cavitt handing out food at the Clair Cares Food Pantry where NOCCC and UNMC, Center for Reducing Health Disparities collected over 300 surveys regarding COVID-19.



Dr. Keyonna King handing out food at the Clair Cares Food Pantry where NOCCC and UNMC, Center for Reducing Health Disparities collected over 300 surveys regarding COVID-19.



## **(NEW) NOCCC Cares: Educating and Addressing COVID-19 Related Needs in North Omaha**

This project is funded by the UNMC College of Public Health COVID-19 Response Grant and will continue through October 31, 2021.

NOCCC Cares is a community-academic partnered project that expands upon the work began with the NOCCC COVID-19 response project funded by the CARES Act. In continued partnership with NOCCC, we plan to understand the needs of the North Omaha community residents in the context of the COVID-19 pandemic by: 1) administering a comprehensive survey capturing information about needed resources, knowledge, behaviors, and beliefs related to COVID-19 and vaccination, 2) develop six additional public service announcements (PSAs) to share information about COVID-19 targeting the diverse population in North Omaha while also demonstrating how to appropriately engage in COVID-19 prevention strategies (e.g., proper handwashing) to keep North Omaha families protected; and 3) distribute COVID-19 related resources including, but not limited to masks, and sanitizers, and grocery items.

### **(H.E.A.R.T)**

The Health Equity Action Research Team (H.E.A.R.T) of North Omaha provides the UNMC Center for Reducing Health Disparity (CRHD) the most efficient way to harvest priority areas for the North Omaha community. Their concept mapping project has led to the identification of focus areas that frame the activities that are to take place in the North Omaha community. The following is a chart that includes preliminary results of those findings:

### **HEART Group CONCEPT MAPPING PROJECT: PRELIMINARY RESULTS OF NORTH OMAHA COMMUNITY PRIORITIES**

<i>What do you need to live a better life in North Omaha?</i>	
<b>*Focus Area</b>	
<b>Businesses</b>	<b>Better Community Relations</b>
<b>*Civic Engagement</b>	<b>Built Environment</b>
<b>*Economic Stability</b>	<b>*Physical and Mental Health</b>
<b>*Education &amp; Mentoring</b>	<b>Food Access</b>
<b>Empowerment &amp; Culture</b>	<b>Recreational Activities</b>
<b>Housing</b>	<b>Child &amp; Family Resources</b>
<b>*Racial Equity</b>	<b>Resources for Special Need Populations</b>
<b>*Safe Environments</b>	<b>Healthy Neighborhoods</b>

## Health Equity Action Research Team (H.E.A.R.T) of North Omaha

The Health Equity Action Research Team (H.E.A.R.T) of North Omaha is a collaborative initiative that consists of service providers, North Omaha residents, community organizers, and academics interested in improving the health and wellbeing of the community by driving grassroots action-oriented programming, policy and system change grounded in resident voices, and supported by data. Currently, the group is conducting a group concept-mapping project with a specific emphasis on African Americans/Black residents that reside in North Omaha with the purpose of identifying priorities most important to the community. Group concept mapping is a participatory mixed-method approach to research that enables a group of participants to describe or brainstorm ideas in response to a prompt or focused question, sort the ideas, rate them on level of need and importance, and subject the data to multivariate analysis. For the purpose of this project, we define the community group as an individual or social group that lives in North Omaha and shares similarly lived experiences, cultural norms, faith, values, and/or identities. The results are transformed into visual maps of representation and to interpret results.

The Health Equity Action Research Team (H.E.A.R.T) collaborative is led by Kenya Love (University of Nebraska Medical Center) in partnership with Katrina Adams (POC Collaborative), Aaron Bowens (Eastern Nebraska Community Action Partnership), Precious McKesson (President of North Omaha Neighborhood Association), Dr. Keyonna King (University of Nebraska Medical Center), Appleseed of Nebraska, Dr. Drissa Toure (University of Nebraska Medical Center), Charles Drew, Stephen Jackson (Douglas County Health Department), Girls Inc. of Omaha, Kelly Karls (Nebraska Medicine), and Creighton University Health Sciences Multicultural and Community Affairs.

To prepare for the concept mapping project, the team developed a focused prompt/question and a community definition. The focus prompt is a statement that participants responded to in the brainstorming phase. These responses became the concepts utilized for rating and mapping. To date, over 200 North Omaha residents have been engaged to identify “what they need to live a better life in North Omaha.” The following organizations/community groups and events have participated in the concept-mapping project: Eastern Nebraska Community Action Partnership, North Omaha Area Health Clinic, Charles Drew Health Center, North Omaha Neighborhood Association, and United for Youth Back to School Bash, Racial and Ethnic Approaches to Community Health Community Outreach Day, African Festival, Creighton University Health Sciences Multicultural and Community Affairs and Health Career Opportunity Program students, and Clair Memorial United Methodist Church, Omaha Home for Boys.

### Methods:

#### Brainstorming stage

H.E.A.R.T collected responses from over 200 North Omaha residents. As a result, respondents generated over 400 brainstorming statements/ideas. Based on the ideas generated, three reviewers conducted a content analysis to synthesize the ideas. During idea synthesis, statements were included, separated, and/or combined based on the following criteria: 1) Idea(s) were unique, 2) one idea in each statement, 3) relevant to the prompt questions, 4) clear and understandable to participate in the sorting and rating stage, and 5) the full statement was a saturation of the topic based on the participant's input. Next, each statement/idea was assigned two keywords per statement. The reviewers developed the keywording scheme; the scheme included idea statement selections to ensure all included statements/ideas met the inclusion criteria. The only statements excluded from the review were unclear or redundant statements. Final keyword schemes were reviewed to achieve consensus on final statement consideration.

### Sorting and rating stage

The reviewers conducted an independent check of statement synthesis by using the criteria above to determine whether to include, exclude, or modify the statements by combining or separating the statements out. After the statements were synthesized, 100 statements were selected for sorting and rating based on two scales. The first scale was based on importance, with 1 representing lower importance or feasibility and 5 representing greater importance. A second scale rating based on need, with 1 representing a need and 2 representing not needed. In total, 15 people participated in the sorting and rating process.

### Preliminary Results:

The process resulted in 100 unique statement or ideas that were grouped into the following 16 clusters (see below). The result is a set of concepts and themes describing North Omaha residents' views on what they feel like they need to live a better life in North Omaha. The next steps will include conducting the multivariate analysis (e.g., concept map, point-rating map, ladder graph, Go Zone maps) and working with H.E.A.R.T to interpret and disseminate the results to inform programming, planning, research, and evaluation efforts for North Omaha. Full report will be complete by January 2021.

#### Uplifting the Voice of North Omaha Residents:

<i>What do you need to live a better life in North Omaha?</i>	
<b>Businesses</b>	<b>Better Community Relations</b>
<b>Civic Engagement</b>	<b>Built Environment</b>
<b>Economic Stability</b>	<b>Physical and Mental Health</b>
<b>Education &amp; Mentoring</b>	<b>Food Access</b>
<b>Empowerment &amp; Culture</b>	<b>Recreational Activities</b>
<b>Housing</b>	<b>Child &amp; Family Resources</b>
<b>Racial Equity</b>	<b>Resources for Special Need Populations</b>
<b>Safe Environments</b>	<b>Healthy Neighborhoods</b>

\*Preliminary Results

For Additional Information, Please Contact Kenya Love at  
kenya.love@unmc.edu or 402-559-0341

## Chronic care management, diabetes, and blood pressure

The Center for Reducing Health Disparities Faith-Based Health Promotion Pilot Project is an academic-community partnership that seeks to improve health disparities identified in the findings of the 2017 Assessment of Health Needs in African American Churches conducted by the UNMC Center for Reducing Health Disparities. Through co-partnering with five churches/faith-based partners and leaders, the Center utilizes an asset-based approach to build capacity in implementing health promotion programming through community-driven efforts, approaches, and evaluating such interventions for impact. Over the past year, the Center has worked to reduce/prevent chronic disease by addressing the following priorities:

- Screening of commonly reported chronic conditions.
- Results: Hypertension (60%), allergies (41%), overweight and obesity (37%), arthritis (36%), high cholesterol (35%), diabetes (28%), heart disease (16.9), or mental health disorders (12.3%)
- Evidence-based training to support chronic disease management and prevention.
- Education materials to support dissemination of chronic disease information and community support systems.
- Evaluation & maintenance of current health ministry program(s) to adapt, adopt, and modify programming that supports maintenance of chronic disease programming and a plan to sustain efforts.

### Capacity Building:

- Utilized the Organization Readiness for Change Assessment tool to evaluate readiness for change and areas to improve capacity in implementing a cardiovascular risk reduction program.
- IncentaHealth Weight Loss Program is in partnership with community clinics to deliver a weight loss program targeting African American residents. This program provides incentives for weight loss in which we are testing which incentive option yields the highest weight loss and adaption of the program to fit the needs of the North Omaha community.

## Access to Health

- Geriatric Workforce Enhancement Project (GWEP) is a five-year academic and community partnership funded through the Health Research Service Administration to transform primary care practices into Age-Friendly PC clinics. To assure the needs of the growing number of the aging population in Nebraska, the GWEP's objective is to address a critical disparity/shortage in the geriatric workforce through increasing the capacity of PC's by implementing the 4-M's (what Matters to the patient, Mentation, Mobility and Medications). Partners include the Eastern Nebraska Area Agency on Aging (ENOA), and the Alzheimer's Association Nebraska Chapter (AANC). Kenya facilitates the practice change for clinics to be "age friendly" using process improvement strategies (e.g., Plan Do Study Act or PDSA cycles).
- Pilot Project: Leveraging Pathway Programs to Increase Racial and Ethnic Underrepresented Minorities into COM. UNMC College of Medicine and UNMC's Center for Reducing Health Disparities are collaborating to increase the diversity of the COM workforce to address one of the barriers to reducing health disparities in our state. Through this collaborative effort, the evaluation team will develop a platform to closely monitor and evaluate the following programs in an effort to expand racial and ethnic underrepresented minority (URM) recruitment and enrollment. In addition, the team is implementing several key recruitment, engagement, and retention strategies from the Urban Universities for HEALTH Metrics Toolkit. (PI: Dr. Shirley Delair; CO-I: Kenya Love, MPH)
- Capacity Building: Assessing Organizations Readiness for Change

- Civic Health Index 2020: Kenya Love is on the Civic Nebraska's Summit planning committee. The goal of Civic Nebraska is to improve the civic health for all Nebraskans. Civic health is a measure of well-being determined by social connectedness, community engagement, political involvement, and confidence in institutions and reflects the degree to which individuals participate and are represented in their communities. Kenya Love facilitated the Community Engagement focus group at the Civic Health Summit to provide more context on key facilitators of civic health and to be included in the Civic Health Index 2020 and assisting in finalizing the Civic Health Index Report set to be published January 2021.
- The 2020 Civic Health Index Report - <https://www.civicnebraska.org/wp-content/uploads/2021/01/2020-Nebraska-Civic-Health-Index-1.pdf>

## Research CTR Priorities

- Kenya Love serves on the IDeA CTR Community Advisory Board (CAB). In this capacity her goal is to ensure clinical and translational research and priorities address health disparities faced by North Omaha residents. As a CAB member, Kenya identifies health priorities, and reviews research grant/pilot proposals.

## COVID-19

- COVID-19 Telehealth Project: To assure access to primary care for special populations, Kenya Love is working with medical students, area senior centers and Eastern Nebraska Office on Aging to facilitate telehealth trainings and wellness checks to senior centers in North Omaha and surrounding areas.

## Mental/Behavioral Health

Black Mental Health Matters: The COVID-19 Effect funded by Lozier Foundation, Kenya Love and Dr. Watanabe-Galloway in collaboration with OHA will be piloting the PHQ9-A screening referral tool and launching a referral network to identify behavioral/mental health needs and connect OHA's 'Opportunity Youth' and families to additional behavioral health services.



## Other Grants and Contracts

**Estabrooks (2017-2021). Preventing Diabetes with Digital Health and Coaching for Translation and Scalability (PREDICTS).** Omada Health. Goal to test the effectiveness of an electronically supported diabetes prevention program. Role: Implementation PI. (1,900,000 total costs)

**Estabrooks (2017-2021). Great Plains IDEA Clinical and Translational Research Network Community Engagement and Outreach Core. NIH-NIGMS U54GM115458.** Goal: To provide infrastructure, consultation, and training to improve regional capacity for community-engaged clinical and translational research. Role: Core Director. (800,000 in total costs).

**Estabrooks (2018-2020). Rural Patient and Stakeholder Engagement in Research. PCORI 10693-UON.** Overall goal: Identify and test tools to support patient and stakeholder engagement in rural areas of the great plains. Role: Principal Investigator. (250,000 total costs).

**Zoellner, Estabrooks MPI (2017-2020).** A randomized-controlled trial to compare the reach, effectiveness, and maintenance of two family-based childhood obesity treatment programs in a medically underserved region. PCORI. Overall goal: To develop community capacity to implement and sustain a childhood obesity treatment program that effectively reduces child weight status. Role: MPI (2,000,000 total costs).

**Buman M; Pereira M (2020-2025). Stand & move at work II: effectiveness and implementation. National Cancer Institute.** Overall goal: To test both the effectiveness and implementation of a multicomponent behavioral intervention designed to support the use of sit-stand workstations. (UNMC PI).

**Hill JL; Heelan KA (2019-2024). Translating Efficacious Pediatric Weight Management Interventions into Rural & Micropolitan Communities. Centers for Disease Control and Prevention.** Overall goal: To collaboratively refine and develop an intervention package for the BHF that includes materials necessary for others to implement the intervention in new metropolitan/rural locations. Role: Senior scientist, Co-I.

**Potter JF (2019-2024). Nebraska Geriatric Workforce Enhancement Training. Health Services Research Administration.** Overall goal: To improve the healthcare and healthcare outcomes of Nebraska's older population by educating teams of primary care of providers, patients, their families, and caregivers on evidence-based practices. Role: Co-I, Mentor.

**Lee RE (2016-2021). Sustainability via active garden education. NIMHD.** Overall goal: To determine the impact of SAGE, a gardening and nutrition education program, on physical activity and fruit and vegetable consumption in low-to-middle income children at daycare. Role: Co-I.

**NIH/NCI, subcontract to Arizona State University, 1R01CA250527**

**Matt Buman and Mark Pereira 08/10/2020-08/09/2025**

**Stand & Move at Work II: Effectiveness and Implementation**

Overall goal: The goal of this hybrid type II effectiveness-implementation trial is to test an evidence-based intervention, Stand & Move at Work, to reduce sedentary time in the workplace, and to test the role of expert facilitation for improving intervention fidelity.

Role: Co-Investigator

**Centers for Disease Control and Prevention, 1U18DP006431**

**Jennie Hill and Kate Heelan (MPI) 04/2019-04/2024**

Translating Efficacious Childhood Obesity Treatment for Rural Micropolitan Practice

Overall goal: The goal of this community-based participatory research project is to package and test the pediatric weight management intervention program for turn-key implementation in other rural and micropolitan communities to decrease the prevalence of obesity.

Role: Co-Investigator

**Community Link Evaluation Project**

Funding Agency: CHI Health

Project Period: 09/2020-06/2021

Total Funding: \$8,000

Role: Principle Investigator

## Original Peer-Reviewed Publications

**Michaud, T.L.**, Hill, J.L., Estabrooks, P.A, Su, D. Cost analysis of a remote patient monitoring program for post-discharge patients with type 2 diabetes. *Journal of Telemedicine and Telecare*. 2020. (in press)

**Michaud, T.L.**, Estabrooks, P.A., You, W., McGuire, T.J., Almeida, F., Karls, K., Love, K., King, K., Hill, J., Reed, J. and Porter, G., 2020. Sustaining the reach of a scalable weight loss intervention through financial incentives-a pragmatic, feasibility, online randomized trial protocol. *Contemporary clinical trials*, 2020. 98, p.106-142.

Clarke MA, Ma J, King KM, Siahpush M, **Michaud T**, Idoate RE, Ramos AK. Sociodemographic Differences and Factors Affecting Patient Portal Utilization. *Journal of Racial and Ethnic Health Disparities*. 2020. (in press)

**Michaud TL**, Ern J, Scoggins D, Su D. Assessing the impact of telemonitoring-facilitated lifestyle modifications on diabetes outcomes: a systematic review and meta-analysis. *Telemedicine and e-Health*. 2020. (in press)

Ramos AK, Carvajal-Suarez M, Siahpush M, Robbins R, **Michaud TL**, Clarke MA, King KM. Predictors of life satisfaction among Hispanic/Latino immigrants in non-metropolitan communities in the Midwest. *Rural Society*. 2020 Jun 16:1-4.

Idoate R, Gilbert M, King K, Spellman L, McWilliams B, Strong B, Bronner L, Siahpush M, Ramos A, Clarke M, **Michaud T**, Godfrey M, and Solheim J. Urban American Indian Community Health Beliefs Associated with Addressing Cancer in the Northern Plains Region. *Journal of Cancer Education*. 2020.

Andersen JA, Scoggins D, **Michaud T**, Wan N, Wen M, Su D. Racial Disparities in Diabetes Management Outcomes: Evidence from a Remote Patient Monitoring Program for Type 2 Diabetic Patients. *Telemedicine and e-Health*. 2020. (In press)

Almeida, F.A., **Michaud, T.L.**, Wilson, K.E., Schwab, R.J., Goessl, C., Porter, G.C., Brito, F.A., Evans, G., Dressler, E.V., Boggs, A.E. and Katula, J.A., 2020. Preventing diabetes with digital health and coaching for translation and scalability (PREDICTS): A type 1 hybrid effectiveness-implementation trial protocol. *Contemporary clinical trials*, 88, p.105877.

**Michaud TL**, Siahpush M, King KM, Ramos AK, Robbins RE, Schwab RJ, Clarke MA, Su D. Program completion and glycemic control in a remote patient monitoring program for diabetes management: does gender matter? *Diabetes research and clinical practice*. 2020 Jan 1; 159:107944.

Idoate R, Gilbert M, **King, KM**, Spellman L, McWilliams B, Strong B, Bronner L, Siahpush M, Ramos Ak, Clarke M, Michaud T, Godfrey M, Solheim J. Urban American Indian Community Health Beliefs Associated with Addressing Cancer in the Northern Plains Region. *J Cancer Edu*. 2020 Mar 11;10.1007/s13187-020-01727-z. doi: 10.1007/s13187-020-01727-z Epub ahead of print. PMID: 32162283; PMCID: PMC7523620.

Johansson P, Tutsch S, **King K**, De Alba A, Lyden E, Leon M, Schober D. Barriers and opportunities for promoting health professions careers among Latinxs in the Midwest. *J Latin Ed*. 2020 Aug; DOI: 10.1080/15348341.2020.1809416

**King KM**, Tchouankam T, Keeler H, Minter CIJ, Love, Teel M, Cai G, Estabrooks PA. Conceptualization and utilization of community engagement approaches in translations research: a scoping review. *Clin Trans Sci*. 2020 Aug; DOI: 110.15761/JTS.1000418.

Clarke MA, Lyden ER, Ma J, **King KM**, Siahpush MM, Michaud T, Idoate RE, Ramos AK. Sociodemographic Differences and Factors Affecting Patient Portal Utilization. *J Racial Ethnic Health Disparities*. 2020 Aug 24. Doi: 10.1007/s40615-020-00846-z. Epub ahead of print. PMID: 32839896.

Thorpe RJ, Cob R, **King K**, Bruce MA, Archibald P, Jones HP, Norris KC, Whitfield KE, Hudson D. The association between depressive symptoms and accumulation of stress among black men in the health and retirement study. *Innov Aging*. 2020 Sep 29;4(5). DOI: 10.1093/geroni/igaa047.

**Ramos, A.K.**, Lowe, A.E., Herstein, J.J., Schwedhelm, S., Dineen, K.K., & Lowe, J.J. (2020). Invisible no more: The impact of COVID-19 on essential food production workers. *Journal of Agromedicine*. DOI:10.1080/1059924X.2020.1814925

**Ramos, A.K.**, Duysen, E., **Carvajal-Suarez, M.**, & **Trinidad, N.** (2020). Virtual outreach: Using social media to reach Spanish-speaking agricultural workers during the COVID-19 pandemic. *Journal of Agromedicine*. DOI:10.1080/1059924X.2020.1814919

**Ramos, A.K.**, **Carvajal-Suarez, M.**, **Trinidad, N.**, **Quintero, S.**, **Molina, D.**, & Rowland, S. (2020). “No somos maquinas” (We’re not machines): Worker perspectives of safety culture in meatpacking plants in the Midwest. *American Journal of Industrial Medicine*. DOI: 10.1002/ajim.23206

**Ramos, A.K.**, Girdžiūtė, L., Starič, J., & Rautiainen, R.H. (2020). Defining “vulnerable agricultural populations” at risk for occupational injuries and illnesses: A European perspective. *Journal of Agromedicine*. DOI: 10.1080/1059924X.2020.1771498

**Ramos, A.K.**, **Carvajal-Suarez, M.**, **Trinidad, N.**, Michaud, T.L., Grimm, B.L., LeVan, T., & Siahpush, M. (2020). A cross-sectional study of gender-related differences in reporting fatigue and pain among Latino/a migrant farmworkers. *Journal of Agromedicine*, 25(3), 319-329. DOI:10.1080/1059924X.2020.1713272

Acosta, L.M., Andrews, A.R., Acosta Canchila, N., & **Ramos, A.K.** (2020). Testing traditional machismo and the gender role strain theory with Mexican migrant farmworkers. *Hispanic Journal of Behavioral Sciences*. DOI: 10.1177/0739986320915649

Clarke, M.A., Lyden E.R., Ma, J., **King, K.M.**, Siahpush, M., **Michaud, T.L.**, Idoate, R.E., & **Ramos A.K.** (2020). Sociodemographic differences and factors affecting patient portal utilization. *Journal of Racial and Ethnic Health Disparities*. DOI:10.1007/s40615-020-00846-z

Israel, G., Diehl, D.C., Galindo, S., Ward, C. **Ramos, A.K.**, Harrington, M., & Kasner, E.J. (2020). Extension Professionals' Information Use, Protective Behaviors, and Work-Life Stress During the COVID-19 Pandemic. *Journal of Extension*, 58(6). <https://joe.org/joe/2020december/a1.php>

**Ramos, A.K.** & Schneker, M. (in press). Hired and contract agricultural workforce – Sustainable solutions. *Journal of Agromedicine*. DOI: 10.1080/1059924X.2021.1849499

**Ramos, A.K.**, McGinely, M., Carlo, G. (in press). Physical and mental fatigue and the need for recovery among Latino/a immigrant cattle feedyard workers. *Journal of Agromedicine*. DOI: 10.1080/1059924X.2020.1845894

**Toure D.**, Kumar, G., Walker, C. (2020). Perspectives of African American and Hispanic Families Regarding Parenting Education: A Qualitative Assessment. *International Journal of Birth & Parent Education*.

Su, D., Mai Thao, N., **Toure, D.** (Review). Correlates of Betel Nut Chewing among Burmese Refugees in Nebraska. *Journal of Immigrant and Minority Health*.

**Toure, D.** Isaac, C., Ern, J., Ouattara, B. (Review). A Qualitative Exploration of Infant Safe Sleep Practices to prevent Sudden Unexpected Infant Deaths. *Journal of Maternal and Child Health*

Ouattara, B., Tibbits, M., **Toure, D.**, Baccaglini, L. (Review). Sudden unexpected infant death rates and risk factors for unsafe sleep practice. *Journal of Maternal and Child Health*

**Toure, D.**, Ouattara, B., Ern, J. Su, D. (In Review). Self-reported determinants of physical activity among African American women churchgoers in Omaha, NE. *Journal of Public Health Reports*.

**Toure, D., Ayers, C., Ouattara, B.** (In Review). Refugee Health Fairs Increase Access to Screenings. *Journal of International Health*.

Pounds, L., **Toure, D., Moore, T.** (In Review). Analyzing Reasons Postpartum Mothers Discontinue Breastfeeding: a secondary analysis of PRAMS data. *Journal of Human Lactation*.

Toure, D., Wani, R., Do, K., **Su, D.** (2020). "Exploring African American and Latino Populations Perceptions of Parenting Education Programs: A Qualitative Assessment of Enablers and Barriers". *Journal of Social Service Research*. DOI: 10.1080/01488376.2018.1546260

Michaud, T., Ern, J., Scoggins, D., **Su, D.** (accepted for publication March 15, 2020). "Assessing the impact of telemonitoring-facilitated lifestyle modifications on diabetes outcomes: a systematic review and meta- analysis." *Telemedicine and e-Health*.

Wen, M., Wang, W., Wan, N., **Su, D.** [Family Income and Student Educational and Cognitive Outcomes in China: Exploring the Material and Psychosocial Mechanisms](#). *Social Sciences* 9 (12), 225.

Liu, D., Lin, G., **Su, D.,** Alexander, JM., Sun, X., Qu, M. [Intergenerational associations of adverse birth outcomes: A surveillance report](#). *Preventive Medicine Reports* 20, 101226

Toure, D., Ouattara, B., Wiens, J., Pounds, L., Moore, T., **Su, D.** Gender Differences in Determinants of Self-Rated Health among African American in Omaha Nebraska: A Church-Based Study. *Journal of Social Service Research*. 46 (4), 475-483.

Ramos, A.K., Lowe, A., Herstein, J.J., Trinidad, N., **Carvajal-Suarez, M.,** Quintero, S.A., Molina, D., Schwedhelm, S., & Lowe, J.J. (2020). A rapid-response survey of essential workers in Midwestern meatpacking plants: Perspectives on COVID-19 response in the workplace. *Journal of Environmental Health*. [UNDER REVIEW].

Bahena, M., **Carvajal-Suarez, M.**, Soliman, A.S., Luo, J., & De Alba, A. (2019). The influence of medical providers on HPV vaccination among children of Mexican mothers: a comparison between Mexico and the Midwest regions of the United States. *BMC public health*, 19(1), 515.

Ramos, A.K., Fuentes, A., & **Carvajal-Suarez, M.** (2018). Self-reported occupational injuries and perceived occupational health problems among Latino immigrant swine confinement workers in Missouri. *Journal of environmental and public health*.

Ramos A.K., **Carvajal B.M**, Leon M.A, & Trinidad N. Sense of community, participation, and life satisfaction among Hispanic immigrants in rural Nebraska. *Kontakt*.

Almeida FA, Michaud TL, Wilson KE, Schwab RJ, Goessl C, Porter GC, Brito FA, Evans G, Dressler EV, Boggs AE, Katula JA, Sweet CC, **Estabrooks PA**. Preventing diabetes with digital health and coaching for translation and scalability (PREDICTS): A type 1 hybrid effectiveness-implementation trial protocol. *Contemp Clin Trials*. 2020;88:105877

Aviles J, \*Porter GC, **Estabrooks PA**, Alexander NB, Madigan ML. (2020) Potential implementation of reactive balance training within continuing care retirement communities. *Translational Journal of the American College of Sports Medicine*, 5, 51-58.

Chen Y, Porter KJ, Wen Y, **Estabrooks PA**, Zoellner JM. (2020). A health/media literacy intervention improves adults' interpretations of sugar-sweetened beverage advertising. *Journal of Media Literacy Education*, 12, 70-83.

Harden SM, Steketee A, Glasgow T, Glasgow RE, **Estabrooks PA**. (2020) Suggestions for advancing pragmatic solutions for dissemination: Potential updates to evidence-based repositories. *American Journal of Health Promotion*. [doi.org/10.1177/0890117120934619](https://doi.org/10.1177/0890117120934619)

Koll TT, Semin JN, Coburn RA, Hill-Polerecky DM, Miller KA, Wildes TM, **Estabrooks PA**, Jones KJ. (2020). Returning to life activities after hematopoietic cell transplantation in older adults. *Journal of Geriatric Oncology*, 11, 304-310 <https://doi.org/10.1016/j.jgo.2019.11.008>

Michaud TL, Siahpush M, Estabrooks P, Schwab RJ, LeVan TD, Grimm B, Ramos AK, Johansson P, Scoggins D, Su, D. (2020). Association Between Weight Loss and Glycemic Outcomes: A Post Hoc Analysis of a Remote Patient Monitoring Program for Diabetes Management. *Telemedicine and e-health*, 26, 621-628.

Reed, JR, Dinkel D, Bice MR, **Estabrooks P**, Pozehl B, Heelan K. (2020) Perceptions of participants and staff of implementing a physical activity program in rural primary care. *Evaluation and Program Planning*, 79, 101772.

Wilson KE, **Estabrooks PA**. (2020). Physical activity promotion message perceptions biased by motivational dispositions. *Applied Psychology: Health and Well-Being*, 12, 610-635. doi:10.1111/aphw.12199

Wilson KE, Harden SM, Kleppe L, McGuire TM, **Estabrooks PA**. (2020). The impact of pairing a wearable movement tracker with an online community weight loss intervention. *Translational Journal of the American College of Sports Medicine*, 5, 29-38.

## Media Interviews

### Dr. Athena Ramos:

- Dr. Athena Ramos's research was featured in ASPPH Connect: Exploring gender differences in fatigue and pain among migrant farmworkers, 02/27/20, <https://www.aspph.org/unmc-exploring-gender-differences-in-fatigue-and-pain-among-migrant-farmworkers/>
- UNMC surveys meatpacking workers about coronavirus, conditions inside plants, Omaha World Herald: [https://www.omaha.com/news/state\\_and\\_regional/unmc-surveys-meatpacking-workers-about-coronavirus-conditions-inside-plants/article\\_1fa54654-4a2a-54ce-b517-00a7d5bdc963.html?utm\\_medium=social&utm\\_source=email&utm\\_campaign=user-share](https://www.omaha.com/news/state_and_regional/unmc-surveys-meatpacking-workers-about-coronavirus-conditions-inside-plants/article_1fa54654-4a2a-54ce-b517-00a7d5bdc963.html?utm_medium=social&utm_source=email&utm_campaign=user-share)
- UNMC launches survey for meatpacking plant workers, El Perico Newspaper: <https://el-perico.com/2020/05/07/unmc-launches-survey-for-meatpacking-plant-workers/>
- UNMC lanza encuesta en español para trabajadores de empacadoras de carne, Telemundo Nebraska: <http://www.telemundonebraska.com/unmc-lanza-encuesta-en-espanol-para-trabajadores-de-empacadoras-de-carne/?fbclid=IwAR0iHSyvEVRwymY3Osls12qCl2yTmdDchbOZ4DWBegTLJhxMX0SXAjAxyPo>
- Encuesta a trabajadores de plantas procesadoras de carne por parte UNMC, Mundo Latino Network: <https://www.mundolatinonetwork.com/2020/05/13/encuesta-a-trabajadores-de-plantas-procesadoras-de-carne-por-parte-unmc/>
- All of Us research program needs us, El Perico Newspaper: <https://el-perico.com/2020/05/06/all-of-us-research-program-needs-us/>
- UNMC survey: Meatpacking plants have made safety improvements, but more changes needed, Omaha World Herald, June 12, 2020, [https://www.omaha.com/news/state\\_and\\_regional/unmc-survey-meatpacking-plants-have-made-safety-improvements-but-more-changes-needed/article\\_99cbbec4-2766-593d-b21c-a6c7ac50f444.html](https://www.omaha.com/news/state_and_regional/unmc-survey-meatpacking-plants-have-made-safety-improvements-but-more-changes-needed/article_99cbbec4-2766-593d-b21c-a6c7ac50f444.html)
- Editorial: Packing plants must step up anti-virus steps, UNMC survey shows, Omaha World Herald, June 16, 2020, [https://www.omaha.com/opinion/editorial-packing-plants-must-step-up-anti-virus-steps-unmc-survey-shows/article\\_5385f801-86e1-56f0-ac86-380ba47e5ecd.html](https://www.omaha.com/opinion/editorial-packing-plants-must-step-up-anti-virus-steps-unmc-survey-shows/article_5385f801-86e1-56f0-ac86-380ba47e5ecd.html)
- Meatpacking Industry Struggles to Find New Normal, Courthouse News Service, June 16, 2020, <https://www.courthousenews.com/meatpacking-industry-struggles-to-find-new-normal/>
- Dr. Athena Ramos was interviewed by the Food and Environment Reporting Network (FERN) about COVID-19 in meat processing facilities: <https://thefern.org/2020/10/could-the-food-system-face-a-new-covid-19-wave-ahead/>



## Manuscripts Under Review

**Ramos, A.K.,** McGinley, M., & Carlo, G. (2020). The influence of workplace safety on U.S. Latino/a cattle feedyard workers' perceived occupational stress and adjustment: An application of an ecological stress-based model of immigrant worker health and safety.

**Ramos, A.K., Su, D., Correa, A. & Trinidad, N.** (2020). Parenting education preferences of Latino parents in Nebraska: An exploratory mixed-methods study.

**Ramos, A.K.,** Adhikari, S., Rautiainen, R.H., & Yoder, A.M. (2020). Protecting livestock workers: Exploring data on fatal and non-fatal injuries in agriculture.

**Ramos, A.K.,** Lowe, A., Herstein, J.J., Trinidad, N., Carvajal-Suarez, M., Quintero, S.A., Molina, D., Schwedhelm, S., & Lowe, J.J. (2020). A rapid-response survey of essential workers in Midwestern meatpacking plants: Perspectives on COVID-19 response in the workplace.

Haws, J.K., Andrews, A.R., Acosta Canchila, N., & **Ramos, A.K.** (2019). Refining the validity of the Migrant Farmworker Stress Inventory among Latino migrant farmworkers in Nebraska.

Herstein, J.J., Mengist, A.D., Stover, D., Austin, C., Schwedhelm, M.M., Lawler, J.V., Lowe, J.J., **Ramos, A.K.,** & Donahue, M. (2020). COVID-19 and the Meat processing industry in Nebraska: Characteristics of cases among workers and effectiveness of select risk mitigation measures.

McCloskey, L., Amutah-Onukagha, N., Anthony, J., Barger, M., Belanoff, C., Bennett, T., ... **Ramos, A.K.,** ... Zera, C. (2020). Bridging the chasm between pregnancy and health over the life course: A national agenda for research and action.

Elliott, K.C., Lincoln, J.M., Syron, L.N., Flynn, M.A., Levin, J.L, Smidt, M., Dzugan, J., **Ramos, A.K.** (2020). Working hours, sleep, and fatigue in the agriculture, forestry, and fishing sector.

Dineen, K.K., Lowe, A., Kass, N.E., Lee, L.M., Wynia, M.K., Mohapatra, S., Voo, T.C., Lookadoo, R., **Ramos, A.K.,** Herstein, J.J., Donovan, S., Schwedhelm, S., & Sederstrom, N. (2020). Treating workers as essential too: An ethical framework.

Kellstedt, D.K., Schenkelberg, M.A., Essay, A.M., Welk, G.J., Rosenkranz, R.R., Idoate, R., **Ramos, A.,** Grimm, B., & Dzewaltowski, D.A. (2020). Youth physical activity promotion through community collaboration: A case study of rural community systems.

Dai, H., **Ramos, A.,** Tamrakar, N., Samson, K., & Grimm, B. (2020). School personnel's responses to school-based vaping prevention program: A qualitative study.

Golden CA, Hill JL, Heelan KA, Bartee RT, Abbey BM, Malmkar A, & **Estabrooks PA** (in press). A dissemination strategy to identify communities ready to implement a pediatric weight management intervention in geographically underserved areas. *Preventing Chronic Disease*.

Kennedy SG, Sanders T, **Estabrooks PA,** Smith JJ, Lonsdale C, Foster C, & Lubans DR (in press) Implementation at-scale of school-based physical activity interventions: A systematic review utilizing the RE-AIM framework. *Obesity Reviews*.

Michaud TM, Hill JL, **Estabrooks PA**, Su D (in press). Cost analysis of a remote patient monitoring program for post-discharge patients with type 2 diabetes. *Journal of Telemedicine and Telecare*.

Johnson LJ, Rohde J, Cramer ME, Zimmerman L, Geary CR, Tibbits MK, Rizzo M, **Estabrooks PA** (in press). Participatory Needs Assessment and Action Planning for a Clinical and Translational Research Network. *Journal of Clinical and Translational Science*.

## Reports

**Toure, D.**, Ern, J., Kumar, G., **Su, D.** (2020, Review). Community Screening of Pediatric Behavioral & Emotional Disorders in Nebraska: A Quantitative Assessment.

**Su, D.**, **Toure, D.**, **Ern, J.**, Vinton, V., Ouattara, B., Crum, A. (2020). Strengthening the Community Health Worker Workforce to Improve Maternal and Child Health in Nebraska: A Statewide Assessment of Needs, Barriers, and Assets.

**Toure, D.**, **Ern, J.**, **Kumar, G.**, **Su, D.** (2020). "Community Screening of Pediatric Behavioral and Emotional Disorders in Nebraska" Report submitted to Nebraska Department of Health and Human Services.

**Estabrooks PA**, Almeida FA, Steenson S, Hill JL, Porter GC. Understanding healthcare system context related to the likelihood of adoption, implementation, and sustainability of a digital diabetes prevention program. Report for Omada Health Inc.

## Research Presentations

**Quintero, S.A. & Ramos, A.K.** *Identifying predictors of integration among immigrant agricultural workers in rural South Dakota.* Poster presentation for the COPH Virtual Student Research Conference, April 9, 2020.

**Ramos, A.K.** *Feedlot safety: Opportunities and resources.* UNL Beef Feedlot Roundtable, West Point, NE, February 20, 2020.

**Ramos, A.K.** *Preliminary findings from the “Community welcoming and integration project in rural South Dakota”.* Presented to the Central Plains Dairy Foundation, Sioux Falls, SD, March 26, 2020.

**Ramos, A.K. & Yoder, A.M.** *Protecting livestock workers from COVID-19.* Presented on the AgriSafe COVID-19 Ag Think Tank, April 23, 2020.

**Ramos, A.K.** *Community welcoming and integration: Strategies from the ground up.* Presented to the Glacial Lakes Multicultural Center, Watertown, SD, April 28, 2020.

**Ramos, A.K.** *Perceptions and concerns of COVID-19 among meatpacking plant workers.* Presentation for UNMC COVID-19 Ethics Committee, June 12, 2020.

**Ramos, A.K.** *Nebraska meatpacking plant worker study results.* Presentation for Bilingual Connectors group, June 18, 2020.

**Ramos, A.K.** *From the farm to the processing plant: Essential workers and COVID-19.* Invited lecture for University of Missouri, Deaton Institute, June 18, 2020.

**Ramos, A.K.** *Perceptions and concerns of meatpacking plant workers in Nebraska.* Presentation for Omaha Together One Community (OTOC), Immigration Action Team, June 22, 2020.

**Ramos, A.K.** Moderator for international panel, *How has your approach to health and safety changed due to COVID-19?* at the International Society for Agricultural Safety and Health Annual Conference, July 9, 2020.

Oatman, J., Yoder, A., **Ramos, A.**, Keenan, M., & Rautianen, R. *Improving safety and health in the cattle feedyard industry.* International Society for Agricultural Safety and Health (ISASH) Annual Conference, July 16, 2020.

Lowe, A., Wynia, M., Herstein, J.J., **Ramos, A.K.**, Dineen, K., Mohapatra, S., & Robbins, R. *Ethical considerations regarding meat processing plant operations, worker safety, and community welfare.* National Institute of Environmental Health Sciences (NIEHS), Worker Training Program webinar, July 22, 2020.

**Ramos, A.K.** *Latinos, meatpacking, and COVID-19.* VOCES Collaborative, August 7, 2020.

Galindo, S., Sampson, S., & **Ramos, A.K.** *Impacts of COVID-19 on Extension agents in the United States.* Southeastern Coastal Center State of the Science, September 18, 2020.

**Ramos, A.K.** *Health equity, essential workers, and COVID-19.* Nebraska Hispanic Chamber of Commerce, 5th Annual Nebraska Leadership, Diversity & Inclusion Conference, September 25, 2020.

Dineen, K., Donovan, S., Herstein, J., Lowe, A., & **Ramos, A.K.** *Protecting the health of meat-processing workers and their communities: A public health ethics and policy approach.* Human/e Health and Healthcare Conference, Creighton University, October 24, 2020.

**Ramos, A.K. & Carvajal-Suarez, M.** *Work-related opportunities and safety perceptions among Latino immigrant cattle feedyard workers with a TN visa.* Midwest Rural Agricultural Safety and Health Conference, Virtual event, November 18, 2020.

**Ramos, A.K.** *Changing demographics and changing behavior.* Panel presentation, Midwest Rural Agricultural Safety and Health Conference, November 20, 2020.

**Dr. Toure** presented at the Baby Blossoms Quarterly Meeting Presentation: A Qualitative Exploration of Safe Sleep Practices to Prevent Sudden Unexpected Infant Death, October 2020.

**Toure D.,** ElRayes, W., Barnes-Josiah, D., Hartman, T., Klinkenbiel, D., Baccaglioni, L. (Virtual Conference) *"Human placental epigenetic modifications and preterm birth."* Epigenetic Symposium – Maternal-Fetal Crosstalk: Harmony vs. Conflict, October 1-3, 2020.

**Toure D.,** Ouattara, B. Strategies to Improve Maternal, Reproductive and Child Health in African Countries (Zoom Conference). Second National Undergraduate Students Research Conference (NUSReC) organized by the Foresight Institute of Research and Translation, Oshogbo, Nigeria, November 30 – December 4, 2020.

**Dr. Toure,** for the second time, was the guest speaker at the graduation of Marriage Counselors organized by M-Solution Consulting International Ltd at the Islamic Center Hall of the University of Lagos Mosque, Akoka, Lagos.

**Toure D.,** Ouattara, B. (Virtual Conference) Improving Newborn and Infant Health in Developing Countries. Fifth International Health Sciences Research Congress, Settat, Morocco, June 2020.

**Estabrooks PA.** Leveraging Small Systems: Implementation science and the co-production of evidence to promote healthy weights. Invited talk at the University of California, San Diego. San Diego, CA, January 14, 2020.

## Journal & Grant Reviewers

**Dr. Paul Estabrooks** served as the Associate Editor of the Journal Preventing Chronic Disease 2017-2020.

**Dr. Keyonna King** reviewed the article “Health Implications of Black Lives Matter among Black Adults” for the Journal of Racial and Ethnic Health Disparities.

**Dr. Keyonna King** reviewed the article “Hearing the Voices of Four First-Generation Hispanic Students Completing a Bachelor of Music Education Degree: A Case Study” for the Journal of Latino Education.

**Dr. Athena Ramos** was a reviewer for the Journal of Agromedicine, Journal of Agricultural Safety and Health, New Solutions, American Journal of Health Promotion, and Rural and Remote Health.

**Dr. Drissa Toure** served as a grant reviewer for Solix, Inc.

**Dr. Drissa Toure** served as a reviewer for the Journal of Immigrants and Minorities Health, Journal of Racial and Ethnic Health Disparities, Journal of Maternal-Fetal & Neonatal Medicine.

**Dr. Drissa Toure** served as an editor for the Journal of Pregnancy and Child Health.

**Dr. Drissa Toure** reviewed abstracts for the Maternal and Child Health program for the APHA's 2020 Annual Meeting and Expo.

**Dr. Drissa Toure** served as a member of the Special Emphasis Panel (SEP) of the CDC Pregnancy Risk Assessment Monitoring System (PRAMS) on October 6-9, 2020.

# The Center for Reducing Health Disparities Team





## **Dejun Su, PhD**

### **DIRECTOR**

#### **Center for Reducing Health Disparities**

Associate Professor

Department of Health Promotion,

Social and Behavioral Health

College of Public Health

University of Nebraska Medical Center

[Dejun.su@unmc.edu](mailto:Dejun.su@unmc.edu)

### **Professional Summary**

**2012-Present** Associate Professor, Department of Health Promotion, College of Public Health, University of Nebraska Medical Center, Omaha, NE

**2010 - 2012** Associate Professor, Department of Sociology, University of Texas Pan-American (UTPA), Edinburg, TX

**2009 – 2012** Director of the CDC-Sponsored South Texas Border Health Disparities Center, UTPA, Edinburg, TX

**2006 - 2010** Assistant Professor at the Department of Sociology, UTPA, Edinburg, TX

**2007 - 2009** Graduate Advisor in the Sociology Master Program at the Department of Sociology, UTPA, Edinburg, TX

### **Education**

**2006 Ph.D.** Sociology University of Chicago

**1999 M.A.** Demography Peking University, China 1999

**1996 B.A.** Sociology Peking University, China 1996

### **Research Interests**

Social Demography

Medical Sociology

Health Research and Policy

### **Professional Affiliations**

American Public Health Association



## **Paul Estabrooks, PhD**

**DISTINGUISHED CHAIR OF PUBLIC HEALTH**

**Center for Reducing Health Disparities**

College of Public Health

University of Nebraska Medical Center

paul.estabrooks@unmc.edu

### **Professional Summary**

**2016- Present** Professor and Harold M. Maurer Distinguished Chair, Department of Health Promotion, University of Nebraska Medical Center

**2010 - 2016** Professor, Human Nutrition, Food, & Exercise, Virginia Tech

**2011 - 2016** Director, Translational Obesity Research Center, Virginia Tech

**2012 - 2016** Professor, Family Medicine, Virginia Tech Carilion School of Medicine

**2012 - 2016** Senior Director of Research, Carilion Clinic

**2007 - 2010** Associate Professor, Human Nutrition, Food, & Exercise, Virginia Tech

**2003 - 2007** Research Scientist, Institute for Health Research, Kaiser Permanente Colorado

**1999 - 2003** Assistant Professor, Kinesiology, Kansas State University

**1999 - 2003** Exercise Specialist, Office of Community Health, Kansas State University

### **Education**

**1999** Doctorate in Kinesiology, Western University

**1996** Master of Science in Kinesiology, the University of Calgary

**1993** Bachelor of Physical Education, with Distinction, the University of Calgary

### **Research Interests**

Dissemination and implementation science

Health equity in physical activity, eating, and weight control

Health behavior intervention research.

Adult and childhood obesity

Diabetes prevention

### **Professional Affiliations**

American Academy of Health Behavior

American College of Sports Medicine

American Public Health Association

International Society for Behavioral Nutrition and Physical Activity

Society for Implementation Research Collaboration

Society of Behavioral Medicine





## **Athena Ramos, PhD, MBA, MS, CPM**

### **ASSISTANT PROFESSOR**

**Center for Reducing Health Disparities**

**College of Public Health**

**University of Nebraska Medical Center**

**aramos@unmc.edu**

### **Professional Summary**

**2018 - Present** Assistant Professor, Department of Health Promotion/Center for Reducing Health Disparities, College of Public Health, University of Nebraska Medical Center, Omaha, NE

**2014 - 2018** Community Health Program Manager, University of Nebraska Medical Center, College of Public Health, Center for Reducing Health Disparities, Omaha, NE

**2014-2015** Instructor, Department of Health Promotion, College of Public Health, University of Nebraska Medical Center, Omaha, NE

**2007- 2014** Program Coordinator, Center for Reducing Health Disparities, College of Public Health, University of Nebraska Medical Center, Omaha, NE

**2005 - 2007** Health Educator, The Cardiac Center of Creighton University, Research Department, Omaha, NE

**2001 - 2005** Tobacco Control Outreach Specialist, Latino Center of the Midlands, Omaha, NE

**2000** Nebraska Coordinator, Latino Vote 2000, United States Hispanic Leadership Institute, Chicago, IL

### **Education**

**2017** Ph.D. International Family and Community Studies, Clemson University

**2015** Appreciative Inquiry Certificate in Positive Business and Society Change, Case Western Reserve University

**2014** LGBT Health C3 Certificate: Basic & Advanced Skills, University of Nebraska Medical Center **2009** MBA, University of Nebraska at Omaha

**2009** Master's in Business Administration (MBA), University of Nebraska at Omaha

**2008** Certified Public Manager (CPM), University of Nebraska at Omaha

**2004** Master's in Urban Studies, University of Nebraska at Omaha

**2004** Certificate in Working with Youth, University of Nebraska at Omaha

**2002** Bachelor's in Public Administration (BS), University of Nebraska at Omaha

**1999** Certificate in Fundraising Management, University of Nebraska at Omaha

## **Research Interests**

Occupational safety, health, and well-being among agri-food system workers  
Tobacco control and prevention  
Latino and LGBT health initiatives  
Racial and ethnic health disparities  
Community development  
Healthy public spaces, recreation areas, and parks  
Intercultural communication and cultural competency  
Coalition-building  
Policy advocacy

## **Professional Affiliations**

AgriSafe Network  
Agricultural Safety and Health Council of America (ASHCA)  
Board Member, Comunidad Maya Pixan Ixim  
Global Alliance for Behavioral Health and Social Justice  
Board Member, International Society for Agricultural Safety & Health (ISASH)  
Metro Omaha Tobacco Action Coalition (MOTAC)  
National Alliance for Hispanic Health  
Public Health Association of Nebraska



## **Keyonna King, DrPH**

**ASSISTANT PROFESSOR**

**Center for Reducing Health Disparities**

College of Public Health

University of Nebraska Medical Center

keyonna.king@unmc.edu

### **Professional Summary**

**2017 - Present** Assistant Professor, Department of Health Promotion

**2016-2017** Program Evaluator, University of Nebraska Omaha, Support and Training for the Evaluation of Programs (STEPs)

**2012- 2015** Senior Research Associate, University of California Los Angeles, Clinical and Translational Science Institute/Community Engagement and Research Program (CERP)

### **Education**

**2014** Doctor of Public Health (DrPH), Loma Linda University

**2006** Master of Arts in Psychology with clinical emphasis, Pepperdine University

**2004** Bachelor of Arts in Psychology, Creighton University

### **Research Interests**

Dr. King focuses her research efforts on reducing health disparities and improving health outcomes for African Americans leveraging the community-based participatory research (CBPR) approach and other community engagement principles. She is also interested in improving holistic health outcomes in African American men with an emphasis on mental health.

### **Professional Affiliations**

American Public Health Association

Public Health Association of Nebraska

National Honor Society for Psychology (Psi Chi)



**Marcela Carvajal–Suárez,  
MPH, BS**

**OUTREACH PROJECT SPECIALIST**  
**Center for Reducing Health Disparities**  
College of Public Health  
University of Nebraska Medical Center  
b.carvajalsuarez@unmc.edu

**Professional Summary**

**2018–Present** Community Outreach Specialist, Center for Reducing Health Disparities, College of Public Health, University of Nebraska Medical Center, Omaha, NE  
**2016–2018** Graduate Research Assistant, Center for Reducing Health Disparities, College of Public Health, University of Nebraska Medical Center, Omaha, NE  
**2011 - 2014** Information System Coordinator for the Surveillance and Control of the Environmental Risk Factors Project of the City of Medellin, College of Public Health, University of Antioquia, Medellin, Colombia

**Education**

**2017** MPH in Epidemiology, University of Nebraska Medical Center, Omaha, NE  
**2006** Bachelor’s in Health and Environmental Resource Management (BS), University of Antioquia, Medellin, Colombia

**Research Interests**

Epidemiology of cancer in disparate populations  
Occupational health and safety among immigrant agricultural workers  
Public health among Hispanic/Latino immigrants  
Racial and ethnic health disparities  
Tobacco control and prevention

**Professional Affiliations**

American Public Health Association  
Metro Omaha Tobacco Action Coalition (MOTAC)



## **Kenya Love, MPH**

**COMMUNITY HEALTH PROGRAM MANAGER**

**Center for Reducing Health Disparities**

College of Public Health

University of Nebraska Medical Center

kenya.love@unmc.edu

### **Professional Summary**

**2018-Present** Community Health Program Manager, UNMC College of Public Health, Center for Reducing Health Disparities

**2013- 2018** Health Planner II, Douglas County Health Department, Division of Community Health & Nutrition Services

**2012 - 2013** National Cancer Institute Health Analyst, RWJF Evaluation Fellow

**2009-2012** Community Health Educator, Douglas County Health Department, Health Promotion Department

### **Education**

**2012** National Cancer Institute Fellowship, Robert Wood Johnson Foundation (RWJF)/Duquesne University Culturally Responsive Evaluation

**2010** M.P.H., University of Nebraska Medical Center, Community Health Education

**2006** B.S. Ed., University of Nebraska at Omaha, Community Health Education

### **Research Interests**

Program Planning

Program Implementation

Culturally Responsive

Developmental Evaluation

Creating health communities by identifying new ways of engaging community residents and leaders through collaboration, sustainable inclusivity, and shared power.

### **Professional Affiliations**

American Public Health Association

American Evaluation Association

North Omaha Community Care Council

Board Member, The Simple Foundation

Health Equity Chair, Regional Health Equity Coalition VII



**Tzeyu L. Michaud, PhD**  
**RESEARCH ASSISTANT PROFESSOR**  
**Center for Reducing Health Disparities**  
College of Public Health  
University of Nebraska Medical Center  
tzeyu.michaud@unmc.edu

### **Professional Summary**

**July 2018– present** Research Assistant Professor, Department of Health Promotion, UNMC

**2015– June 2018** Postdoctoral Research Associate, Department of Health Promotion, Social and Behavioral Health, UNMC

**2009–2015** Graduate Research Assistant, Division of Health Policy and Management, University of Minnesota, Minneapolis

**2008–2009** Research Associate, Chang Gung University, Taiwan

**2006–07 & 2009** Research Associate, National Yang-Ming University, Taiwan

### **Education**

**2015** Ph.D., Health Services Research, Policy & Administration (with an emphasis on Health Decision Science), University of Minnesota, Minneapolis

**2006** MHA, Healthcare Management, Chang Gung University

**2004** B.A. Healthcare Management, Taipei Medical University

### **Research Interests**

Health Service Research

Economic Evaluation

Decision Analysis

Cost-effectiveness Analysis

Comparative Effectiveness Research

Implementation Science

### **Professional Affiliations**

Society of Medical Decision Making

Associate Editor for the Journal of Alzheimer's Disease



## **Drissa M. Toure, MD, PhD, MPH**

**BRIDGE TO CARE PROGRAM DIRECTOR  
COMMUNITY CLINICAL RESEARCHER/  
GRADUATE LECTURER**

**Center for Reducing Health Disparities  
College of Public Health  
University of Nebraska Medical Center  
drissa.toure@unmc.edu**

### **Professional Summary**

**2014 –Present** Bridge to Care Program Director/Faculty Advisor, University of Nebraska Medical Center, Center for Reducing Health Disparities

**2010 – Present** Community Clinical Researcher, University of Nebraska Medical Center– College of Public Health, Center for Reducing Health Disparities, Omaha, NE

**2005- 2010** Senior Research Associate /Outreach Coordinator, George Washington University (GWU), Prevention & Research Center, NIH–DC Initiative to Reduce Infant Mortality in Minority Populations, Washington, DC

**1998-2001** Medical Doctor, Founding Board Member, Medical Clinic ‘DEFI SANIE’ Bamako, Mali

**1996-1998** Resident, University Hospital of Gabriel Touré, Trauma Intensive Care Unit, Bamako, Mali

**1997 – 1998** Medical Program Co–Coordinator, International Committee of the Red Cross of Geneva (ICRC), Bamako, Mali

### **Education**

**Ph.D.** University of Nebraska Medical Center (UNMC), Omaha, NE, College of Public Health (COPH). Health Promotion and Disease Prevention Research (MCH Epidemiology emphasis) Dissertation: Epigenetic Modifications of Human Placenta Associated with Preterm Birth

**M.P.H.** Specialization in Maternal and Child Health, School of Public Health and Health Services, The George Washington University

**M.D.** Faculty of Medicine, Pharmacy and Dentistry of Mali, Bamako, Mali

### **Research Interests**

Maternal & Child Health Epidemiology

Racial and Ethnic Disparities in Maternal & Child Health

Epigenetics & Pregnancy Outcomes

Public Health & Clinical Medicine Approach

Refugee & Immigrant Health

## **Professional Affiliations**

American Public Health Association

Public Health Association of Nebraska

Association of Maternal and Child Health Programs

Association of Teacher of Maternal and Child Health

Douglas County Health Department- Fetal Infant and Mortality Review (FIMR), Team Member

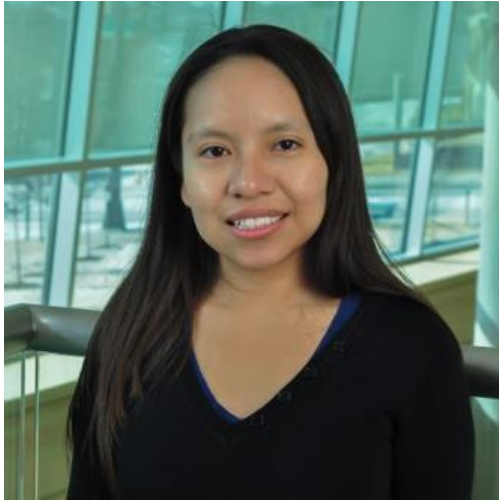
Foresight Institute of Research and Translation (FIRAT) Nebraska Partnership for Mental Healthcare Access (NEP-MAP)

Nebraska Perinatal Quality Improvement Collaborative (NPQIC)

## **Honors and Awards**

Dr. Toure was the recipient of the Best Presenter Plaque given by the Foresight Institute of Research and Translation (FIRAT) at the Second National Undergraduate Students Research Conference (NUSReC) by Osun State University Oshogbo, Nigeria, held virtually.





**Natalia Trinidad, MPH, BS**  
**OUTREACH PROJECT SPECIALIST**  
**Center for Reducing Health Disparities**  
College of Public Health  
University of Nebraska Medical Center  
natalia.trinidad@unmc.edu

### **Professional Summary**

**2014- Present** Outreach Project Associate, University of Nebraska Medical Center, College of Public Health, Center for Reducing Health Disparities, Omaha, NE  
**2013 -2015** Manufacturing Technologist I, American Red Cross, Omaha, NE  
**2012–2013** QC Analyst I, Novartis Consumer Health, Inc., Lincoln, NE  
**2011–2012** Chemistry Technician, Novartis Consumer Health, Inc., Lincoln, NE

### **Education**

**2019** Master of Public Health (MPH), Epidemiology concentration, University of Nebraska Medical Center, Omaha, NE  
**2011** Bachelor’s in Biology (BS), Minor in Business Administration, Creighton University, Omaha, NE

### **Research Interests**

Prevention of underage drinking  
Tobacco control and prevention  
Community engagement and outreach  
Racial and ethnic health disparities  
Healthy public spaces, recreations areas, and parks  
Cancer Epidemiology

### **Professional Affiliations**

Board member, Metro Omaha Tobacco Action Coalition  
Public Health Association of Nebraska



## **Tari L. Rose**

**ADMINISTRATIVE ASSISTANT**

**Center for Reducing Health Disparities**

University of Nebraska Medical Center

College of Public Health

tari.rose@unmc.edu

### **Professional Summary**

Tari is a native Nebraskan, raised in Bellevue. Her background is inclusive of Educational Services, Customer Service, and Human Resources. Tari loves interacting with people and helping others, in which makes her a great addition to the Center for Reducing Health Disparities. During her free time, Tari enjoys reading, swimming, shopping, and gardening. She is currently preparing to obtain her Nebraska Real Estate License.

### **Honors and Awards**

Tari was the recipient of the COPH Silver U award.



## **Jessica Ern, MPH, BS**

**RESEARCH ASSISTANT**

**Center for Reducing Health Disparities**

College of Public Health

University of Nebraska Medical Center

[jessica.ern@unmc.edu](mailto:jessica.ern@unmc.edu)

### **Professional Summary**

**2018- Present** Research Assistant, Center for Reducing Health Disparities, College of Public Health, University of Nebraska Medical Center, Omaha, NE

**2017** Leadership Education in Neurodevelopmental and Related Disabilities (LEND) Trainee, Munroe-Meyer Institute, University of Nebraska Medical Center, Omaha, NE

### **Education**

**2018** MPH Maternal and Child Health Candidate, University of Nebraska Medical Center, Omaha, NE

**2015** Certificate in the Foundations of Public Health, University of Michigan School of Public Health, Ann Arbor, Michigan

**2011** Bachelor of Science in Biology, Creighton University, Omaha, Nebraska

### **Research Interests**

Cultural competency and health policy

Healthcare Access

Maternal and reproductive health

Racial and ethnic health disparities

Refugee health

### **Professional Affiliations**

American Public Health Association

Global Health Council



## **Gaurav Kumar, MBBS, MPH**

**GRADUATE RESEARCH ASSISTANT**

**Center for Reducing Health Disparities**

College of Public Health

University of Nebraska Medical Center

gaurav.kumar@unmc.edu

### **Professional Summary**

**2019–Present** Graduate Research Assistant, Center for Reducing Health Disparities, College of Public Health, University of Nebraska Medical Center, Omaha, NE

**2018– 2019** Other Hourly Worker, Department of Health Promotion, College of Public Health, University of Nebraska Medical Center, Omaha, NE

**2018** Teaching Assistant, Department of Health Promotion, College of Public Health, University of Nebraska Medical Center, Omaha, NE

**2014–2015** General Physician, The Center for Health Research and Development, New Delhi, India

### **Education**

**2019– Present** PhD student in Department of Health Promotion, College of Public Health, University of Nebraska Medical Center, Omaha, NE

**2018** MPH (Epidemiology), College of Public Health, University of Nebraska Medical Center, Omaha, NE

**2013** Bachelor of Medicine, Bachelor of Surgery (MBBS), National Medical College and Teaching Hospital, Nepal

### **Research Interests**

Racial and ethnic health disparities

Health Promotion

Chronic Disease Prevention

### **Professional Affiliations**

American Public Health Association

Medical Council of India



## **Titilola Labisi, MPH, MHA**

**GRADUATE RESEARCH ASSISTANT**  
**Center for Reducing Health Disparities**  
College of Public Health  
University of Nebraska Medical Center  
titilola.labisi@unmc.edu

### **Professional Summary**

**2019–Present** Graduate Research Assistant, Center for Reducing Health Disparities, College of Public Health, University of Nebraska Medical Center, Omaha, NE, USA

**2019** HIV Surveillance Coordinator, Missouri State Department of Health and Senior Services, Jefferson City, MO, USA

**2018** HIV Linkage to Care Coordinator, New Mexico Department of Health, Santa Fe, NM, USA

### **Education**

**2019– Present** PhD, Department of Health Promotion, College of Public Health, University of Nebraska Medical Center, Omaha, NE, USA

**2018** Master of Health Administration (MHA), Missouri State University Springfield, MO, USA

**2017** Master of public Health (MPH), Missouri State University Springfield, MO, USA

**2012** BSc, Microbiology, Olabisi Onabanjo University, Ogun State, Nigeria

### **Research Interests**

HIV prevention

Racial and ethnic health disparities

Health Promotion

Global Health



## **Khalid Alshehri, MHA, BS**

**GRADUATE RESEARCH ASSISTANT**

**Department of Health Services Research and Administration**

College of Public Health

University of Nebraska Medical Center

Khalid.alshehri@unmc.edu

### **Professional Summary**

**2020- Present** Graduate Assistant; Center for Reducing Health Disparities, University of Nebraska Medical Center, Omaha, NE

**2019-2020** Research Assistant; Department of Health Services Research & Administration, University of Nebraska Medical Center, Omaha, NE

**2018-2019** Insurance Review; Avera Health, Sioux Falls, SD

### **Education**

**2019- Present** PhD, Health Service Research Administration and Policy, University of Nebraska Medical Center, Omaha, NE

**2016 - 2018** MHA, Health Administration; Missouri State University, Springfield, MO

**2005-2010** Bachelor of Radiological Sciences, King Saud University; Riyadh, KSA

### **Research Interests**

Telemedicine

Health systems and economics

Health care and public health leadership/workforce

Health outcomes and quality control



**Sophia A. Quintero, BS**  
**GRADUATE RESEARCH ASSISTANT**  
**Center for Reducing Health Disparities**  
College of Public Health  
University of Nebraska Medical Center  
sophia.quintero@unmc.edu

## Professional Summary

**2020 - Present**, Community Outreach Coordinator, Omaha Healthy Kids Alliance, Omaha, NE  
**2020** Capstone Experience, The Wellbeing Partners, Omaha, NE  
**2020 - Present**, Culinary Specialist, Whispering Roots, Omaha, NE  
**2019** Intern/ Apex, Nebraska Extension - Douglas and Sarpy Counties, Omaha, NE  
**2018 - Present** Community Research Assistant, Center for Reducing Health Disparities, University of Nebraska Medical Center, Omaha, NE  
**2018 -** Nutrition Educator, Medical Mission Trip, Fellowship of Catholic University Students, Lima, Peru  
**2017 - 2018** Administrative Assistant, SDSU Catholic Newman Center, San Diego, CA  
**2017 - 2018** Religious Educator, SDSU Catholic Newman Center, San Diego, CA  
**2017 -** Mission Trip, Christ in the City, Denver, Colorado  
**2016 - 2018** Diet Clerk, Alvarado Hospital Medical Center, San Diego, CA  
**2012 - 2016** Independent Caregiver for Elderly Patients, San Diego, CA

## Education

**2018- Present** MPH Health Promotion Student, University of Nebraska Medical Center, College of Public Health, Omaha, NE  
**2018** Bachelor of Science (B.S.) Foods and Nutrition with a Minor in Public Health, San Diego State University, San Diego, CA  
**2013** Associates of Arts (A.A.) Spanish, Grossmont Community College, El Cajon, CA  
**2013** Associates of Art (A.A) University Studies - Social and Behavioral Sciences, Grossmont Community College, ElCajon, CA

## Research Interests

Promotion of Healthy Dietary Habits  
Immigrant Health and Integration  
Racial and Ethnic Health Disparities  
Chronic Disease Prevention  
Health Equity and Social Determinants of Health

## Professional Affiliations

American Public Health Association  
Academy of Nutrition and Dietetics



## **Cady Walker, BS**

**RESEARCH ASSISTANT**

**Center for Reducing Health Disparities**

College of Public Health

University of Nebraska Medical Center

Cady.walker@unmc.edu

### **Professional Summary**

**2020 - Present** Research Assistant, Center for Reducing Health Disparities, College of Public Health, University of Nebraska Medical Center, Omaha, NE

**2019 - 2020** Apheresis Phlebotomist, American Red Cross, Omaha, NE

**2018–2019** Donor Center Coordinator, American Red Cross, Omaha, NE

### **Education**

**2020 - Present** MPH Health Promotion Student, University of Nebraska Medical Center, Omaha, NE

**2018 -** Bachelor of Science in Sociology, University of Nebraska, Omaha, NE.

### **Research Interests**

Nutrition and healthy diet promotion

Chronic disease prevention

Racial and ethnic disparities

Cultural competence in healthcare



## Contact Us

The Center is always happy to discuss the efforts that we are making in the community and how to develop and create effective partnerships, programs, and initiatives to meet community needs. We would love to work with you and/or answer any questions that you may have.

Please feel free to contact us.

### **Dr. Dejun Su**

Center Director

402.559.9660

dejun.su@unmc.edu

### **Dr. Paul Estabrooks**

Distinguished Chair of Public Health

402.559.4325

Tricia.munoz@unmc.edu

### **Dr. Athena Ramos**

Assistant Professor

402.559.2905

aramos@unmc.edu

### **Dr. Keyonna King**

Assistant Professor

402.559.3813 (North Office)

402.559.1997 (UNMC Campus)

keyonna.king@unmc.edu

Wurdeman Learning

Center 5190 Sprague Plaza

Omaha, NE 68104

### **Kenya Love**

Community Health Program Manager

402.599.0341

kenya.love@unmc.edu

Wurdeman Learning

Center 5190 Sprague Plaza

Omaha, NE 68104

### **Marcela Carvajal-Suárez**

Outreach Project Specialist

402.559.3670

b.carvajalsuarez@unmc.edu

### **Dr. Tzeyu Michaud**

Research Assistant Professor

402.836.9195

tzeyu.michaud@unmc.edu

### **Dr. Drissa Toure**

Bridge to Care Program Director

402.559.9661

drissa.toure@unmc.edu

### **Natalia Trinidad**

Outreach Project Specialist

402.552.6819

natalia.trinidad@unmc.edu

### **Tari L. Rose**

Office Associate II

402.559.9660

tari.rose@unmc.edu

#### **WEBSITE:**

<http://unmc.edu/publichealth/crhd/>

#### **BLOG:**

<http://blog.unmc.edu/cfrhd/>

#### **FOLLOW US:**







## Center for Reducing Health Disparities