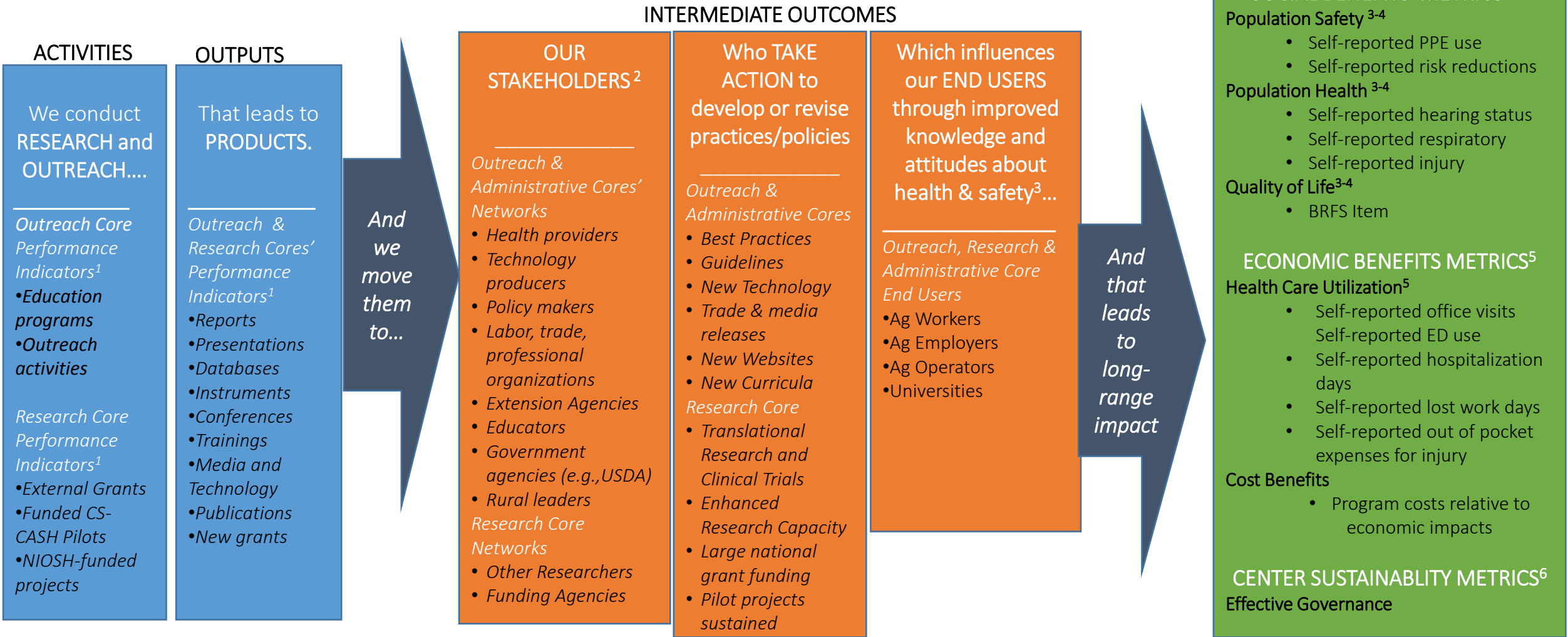


CS-CASH Logic Model



1. Performance Measure Source: NIOSH Logic Model. Data collected for CS CASH through Online Database.
 2. Performance Measure Source: NIOSH Goals and Logic Model. Data collected for CS CASH through Social Network Analysis
 3. Performance Measure Source: Blumenthal , D., McGinnis, M. (2015). *Measuring Vital Signs*. JAMA. 2015;313(19):1901-1902. doi:10.1001/jama.2015.4862; Pincus, H., Zainab, A., Blank, A., & Mazmanian, P. (2013). Evaluation and the NIH Clinical Translational Science Awards: A Top Ten List. *Evaluation & the Health Profession*, 36,411-431. Data collected for CS CASH through POPULATION-BASED OUTCOMES AND END OUTCOMES EVALUATION SURVEY and CS CASH INJURY SURVEILLANCE SURVEY (NASD)
 4. Performance Measure Source: Institute of Medicine (2015). *Vital Signs: Measuring Health and Health Care: Core Metrics for Health and Healthcare Progress*. National Academies of Health Accessed at: <http://iom.nationalacademies.org/Reports/2015/Vital-Signs-Core-Metrics.aspx>; Blumenthal , D., McGinnis, M. (2015). *Measuring Vital Signs*. JAMA. 2015;313(19):1901-1902. doi:10.1001/jama.2015.4862. Data Collected for CS CASH through POPULATION-BASED OUTCOMES AND END OUTCOMES EVALUATION SURVEY and CS CASH INJURY SURVEILLANCE SURVEY (NASD)
 5. Data collected through CS CASH INJURY SURVEILLANCE SURVEY (NASD)
 6. Pincus, H., Zainab, A., Blank, A., & Mazmanian, P. (2013). Evaluation and the NIH Clinical Translational Science Awards: A Top Ten List. *Evaluation & the Health Profession*, 36,411-431. Data collected from ICE Instrument and Field Visits