



UNMC Lactation Spaces

[Kearney Campus](#), [Lincoln Campus](#), [Norfolk Campus](#), [Omaha Campus](#), [Scottsbluff Campus](#)

A. OMAHA CAMPUS

1. Buffett Cancer Center - "Fred & Pamela Buffett Cancer Center"

- a. [UNMC Maps](https://info.unmc.edu/unmc101/maps.html) <https://info.unmc.edu/unmc101/maps.html>
- b. Room 5.12.04.
- c. The room has two stations, each equipped with a Medela Symphony Pump without parts, divided by a curtain for privacy. The room is equipped with two chairs, two tables, sanitation wipes, power sources, a trash can, and a sink.
- d. Access: ID Card access. Contact the UNMC Title IX Office at UNMCEducationTitleIX@unmc.edu to request access to the lactation space.
- e. Directions: Exit the elevator on the fifth floor and follow the signs towards Family Laundry & Shower. The room will be across from Family Laundry & Shower.



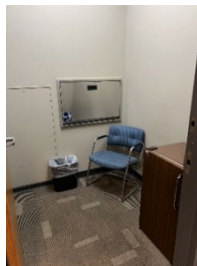
2. Business Services (Building 4230)

- a. [UNMC Maps](https://info.unmc.edu/unmc101/maps.html) <https://info.unmc.edu/unmc101/maps.html>
- b. Room 2049.
- c. The room has two stations, each with a chair and table. Power sources and a room divider are also available.
- d. Access: The room is accessible by keycode 2-0-4-9-#.
- e. Directions: Enter the building and turn right. The room will be in front of you at the end of the hallway.



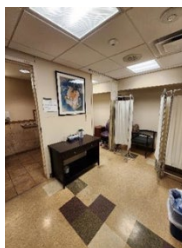
3. Business Services (Building 4230)

- a. [UNMC Maps](https://info.unmc.edu/unmc101/maps.html) <https://info.unmc.edu/unmc101/maps.html>
- b. Room 2057 – Lactation Room.
- c. The room has a chair, refrigerator, power source, changing table, and locks from the inside. The bathroom is next door.
- d. Access: anyone with access to the IT division of Building 4230.
- e. Contact: Info Desk at 402.559.7253.
- f. Directions: Enter the IT Division and turn right. Take the next right and the room will be between the bathrooms.



4. Clarkson Tower

- a. [UNMC Maps](https://info.unmc.edu/unmc101/maps.html) <https://info.unmc.edu/unmc101/maps.html>
- b. Room 4879.
- c. The room has two stations, each equipped with a Medela Symphony pump with no parts, divided by a foldable curtain for privacy. The room also has tables, chairs, power sources, and a bathroom with sink, toilet, mirror, and trash can.
- d. Access: For access code, contact Labor and Delivery at 402.559.6363.
- e. Contact: Stacia Kennedy at skennedy@nebraskamed.com or 402.552.3487.
- f. Directions: From the Service Elevators, follow signs towards Emergency Room Holding Area Room 4881 A-G. The room will be in the hallway past the holding area.



5. Clarkson Tower

- a. [UNMC Maps](https://info.unmc.edu/unmc101/maps.html) <https://info.unmc.edu/unmc101/maps.html>
- b. Room 08174.
- c. The room has two stations divided by a curtain for privacy. One Medela Symphony pump with no parts is available in the space. The room also has tables, power sources, television, and a bathroom with sink, shower, mirror, toilet, and trash can.
- d. Access: For access code, contact Labor and Delivery at 402.559.6363.
- e. Contact: Labor and Delivery at 402.559.6363.
- f. Directions: From Elevator E, exit on the Ground floor, and turn left. Take your next left down the hallway, turn left at the hallway across from the Pulmonary Lab, and then turn left again at the following hallway. The room will be on your left-hand side.



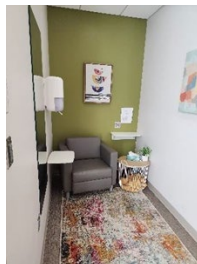
6. College of Nursing

- a. [UNMC Maps https://info.unmc.edu/unmc101/maps.html](https://info.unmc.edu/unmc101/maps.html)
- b. Room 4064.
- c. The room has one couch, chairs, table, power source, reading materials, a refrigerator, trashcan, and a Medela Pump in Style Advanced Pump without parts.
- d. Access: The room has open access and locks from the inside.
- e. Contact: CON Dean's Office at 402.559.5414.
- f. Directions: Exit the elevators on the 4th floor, turn right, then turn right again. Walk to the end of the hall and the room will be on your left-hand side before you hit the skywalk to CNS.



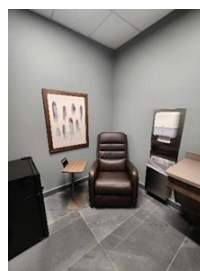
7. Center for Drug Discovery and Lozier Center for Pharmacy Sciences and Education (College of Pharmacy)

- a. [UNMC Maps https://info.unmc.edu/unmc101/maps.html](https://info.unmc.edu/unmc101/maps.html)
- b. Room 1039A.
- c. The room has a chair, table, power source, refrigerator, mirror, trash can, Clorox wipes and paper towels.
- d. Access: The room has open access and the door locks from the inside.
- e. Contact: COP Dean's Office at 402.559.4838.
- f. Directions: The room is at the east end of the first floor, near the stairwell and compounding lab.



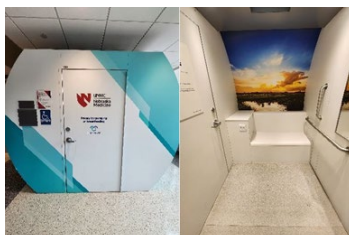
8. Davis Global Center

- a. [UNMC Maps https://info.unmc.edu/unmc101/maps.html](https://info.unmc.edu/unmc101/maps.html)
- b. Room 1007.
- c. The room has a chair, table, power source, sink, lamp, mirror, trash can, and a locking refrigerator (request key from the information desk).
- d. Access: The room has open access and the door locks from the inside.
- e. Contact: Global Center Information Desk at 402.559.3239.
- f. Directions: When facing the Information desk, take the hallway to the right and the room is in the hallway behind the elevators.



9. Durham Outpatient Center

- a. [UNMC Maps](https://info.unmc.edu/unmc101/maps.html) <https://info.unmc.edu/unmc101/maps.html>
- b. Located in Main Lobby – Mamava Lactation Pod.
- c. The room has power sources, a bench, shelf, mirror, and hand sanitizer.
- d. Access: To obtain access, contact the Information Desk & Security at 402.559.5111
- e. Contact: Information Desk & Security at 402.559.5111.
- f. Directions: Enter the main lobby and the Pod is to your right behind the escalators.



10. Durham Outpatient Center

- a. [UNMC Maps](https://info.unmc.edu/unmc101/maps.html) <https://info.unmc.edu/unmc101/maps.html>
- b. Room 4654.
- c. The room has a chair, shelf, sink, trashcan, power source, sanitation wipes, and Medela Symphony pump with no parts. The door locks from the inside.
- d. Access: Access granted by the Women's Health Resource Center. Reservations for time slots are strongly recommended. If unoccupied, the room is available for drop in use.
- e. Contact: The Women's Health Resource Center at 402.559.6345.
- f. Directions: Exit the elevators on the fourth floor to the left and the Resource Center will be in front of you.



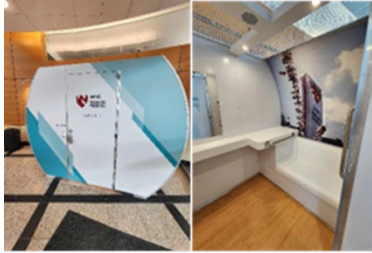
11. Durham Research Center I

- a. [UNMC Maps](https://info.unmc.edu/unmc101/maps.html) <https://info.unmc.edu/unmc101/maps.html>
- b. Room 1007C.
- c. The room has two stations divided by a curtain for privacy. It has two couches with tables, power sources, hand sanitizer, sanitation wipes, sink, mirror, trash can, and white board.
- d. Access: ID card access. Please contact Julie A. Sommer at julie.sommer@unmc.edu or Dorene M. Scheffel at dorene.scheffel@unmc.edu to request access to the lactation space.
- e. Directions: From the DRC1 lobby, enter the hallway to the left of the elevators and go through doorway 1099G between classrooms 1005 and 1006. The room will be past the break area on the right-hand side.



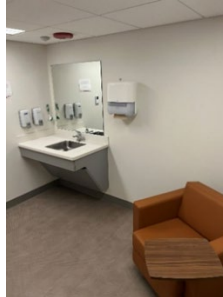
12. Durham Research Center II

- a. [UNMC Maps https://info.unmc.edu/unmc101/maps.html](https://info.unmc.edu/unmc101/maps.html)
- b. Located in the Main Lobby – Mamava Lactation Pod.
- c. The room has two benches, shelves, power sources, a mirror, trashcan, and cleaning supplies. The Pod can be locked from the inside.
- d. Access: Accessed through the Mamava App or by contacting Dorene Scheffel at dorene.scheffel@unmc.edu or 402.559.3231.
- e. Contact: Dorene Scheffel at dorene.scheffel@unmc.edu or 402.559.3231.
- f. Directions: Enter the lobby of DRC2 and the Pod will be on your right-hand side.



13. Joseph D. & Millie E. Williams Science Hall

- a. [UNMC Maps https://info.unmc.edu/unmc101/maps.html](https://info.unmc.edu/unmc101/maps.html)
- b. The room is between Room 1.011 and Room 1.013.
- c. The room has a chair with an attached table, sink, mirror, paper towels, and a power source.
- d. Access: The room has open access and locks on the inside.
- e. Directions: The room is on the first floor. At the Student Accounts / Cashier windows, take a left. The room will be on your right before the double doors.



14. Michael F. Sorrell Center for Health Science Education (College of Medicine)

- a. [UNMC Maps https://info.unmc.edu/unmc101/maps.html](https://info.unmc.edu/unmc101/maps.html)
- b. Room 3013.
- c. The room has two stations which can be divided by curtains for privacy. The room has two couches, power sources, a sink, trash can, Kleenex, hand sanitizer, Clorox wipes, and mirror.
- d. Access: ID card access. Contact the UNMC Title IX Office at UNMCEducationTitleIX@unmc.edu to request access to the lactation space.
- e. Directions: Exit the elevator on the third floor to the right, turn right again and the room will be on your left-hand side past the wheelchair accessible bathroom.



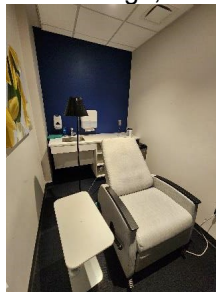
15. Maurer Center for Public Health (College of Public Health)

- a. [UNMC Maps](https://info.unmc.edu/unmc101/maps.html) <https://info.unmc.edu/unmc101/maps.html>
- b. Room 2059.
- c. The room has a chair, table, refrigerator, sink, trashcan, mirror, power source, and Medela Symphony pump. Additional pump supplies are also available on a donation basis.
- d. Access: The room has open access and locks on the inside.
- e. Directions: Enter from the South end of the building. The room will be on your right-hand side near the wheelchair accessible bathroom.



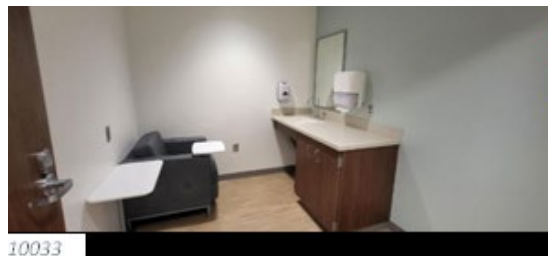
16. Medical Science Building

- a. [UNMC Maps](https://info.unmc.edu/unmc101/maps.html) <https://info.unmc.edu/unmc101/maps.html>
- b. Room 2520D.
- c. The room has a reclining chair, table, lamp, sink, refrigerator, power source, and trash can. The room is in the House Officer Wellness Lounge (HOWL). The room is locked from the inside.
- d. Access: This room is only accessible to individuals with prior access to this area.
- e. Directions: Exit the elevator from University Tower on the 2nd floor and follow signs for “Surgery Patients and Family Only” into Hixon-Lied. Turn left down the hallway towards Buffet Cancer Center and the Wellness Lounge, Room 2520, will be on your right-hand side before you reach the elevators. Room 2520D is within the lounge, the last room down the hallway.



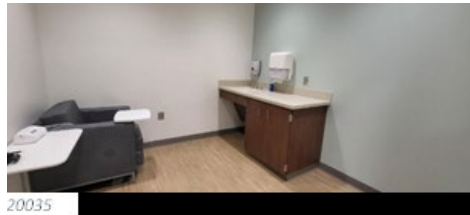
17. Munroe-Meyer Institute (MMI)

- a. [UNMC Maps](https://info.unmc.edu/unmc101/maps.html) <https://info.unmc.edu/unmc101/maps.html> (6902 Pine St. Omaha, Nebraska 68106).
- b. Room 10033. The room has a chair, a side table, a power source, a mirror, a trashcan, a sink, hand soap, paper towels and an Ameda Finesse Pump.
- c. Access: open-access and locks on the inside. Accessible to MMI staff, faculty, and guests.
- d. Contact: MMI, Clinic Nurse Manager: 402.559.2297.
- e. Directions: **10033**; From the east entrance, the room is straight forward and just to the right in the main hallway. The front desk receptionist can help with directions if needed.



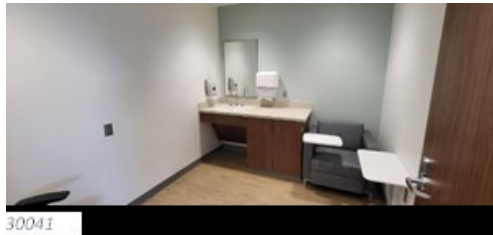
18. Munroe-Meyer Institute (MMI)

- a. [UNMC Maps https://info.unmc.edu/unmc101/maps.html](https://info.unmc.edu/unmc101/maps.html) (6902 Pine St. Omaha, Nebraska 68106).
- b. Room 20035.
- c. The room has a chair, a side table, a power source, a mirror, a trashcan, a sink, hand soap, paper towels and an Ameda Finesse Pump.
- d. Access: open-access and locks on the inside. Accessible to MMI staff, faculty, and guests.
- e. Contact: MMI, Clinic Nurse Manager: 402.559.2297.
- f. Directions: 20035; From the east entrance take the main elevators to the second floor. The room is straight ahead just past the waiting area on the left side wall.



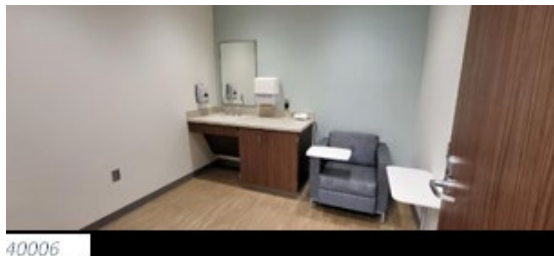
19. Munroe-Meyer Institute (MMI)

- a. [UNMC Maps https://info.unmc.edu/unmc101/maps.html](https://info.unmc.edu/unmc101/maps.html) (6902 Pine St. Omaha, Nebraska 68106).
- b. Room 30041.
- c. The room has a chair, a side table, a power source, a mirror, a trashcan, a sink, hand soap, paper towels and an Ameda Finesse Pump.
- d. Access: open-access and locks on the inside. Accessible to MMI staff, faculty, and guests.
- e. Contact: MMI, Clinic Nurse Manager: 402.559.2297.
- f. Directions: 30041; From the east entrance take the main elevators to the third floor. The room is to the right past the check-in desk.



20. Munroe-Meyer Institute (MMI)

- a. [UNMC Maps https://info.unmc.edu/unmc101/maps.html](https://info.unmc.edu/unmc101/maps.html) (6902 Pine St. Omaha, Nebraska 68106).
- b. Room 40006.
- c. The room has a chair, a side table, a power source, a mirror, a trashcan, a sink, hand soap, paper towels and an Ameda Finesse Pump.
- d. Access: open-access and locks on the inside. Accessible to MMI staff, faculty, and guests.
- e. Contact: MMI, Clinic Nurse Manager: 402.559.2297.
- f. Directions: 40006; From the east entrance take the main elevators to the fourth floor. Go right out of the elevators and past the administration suite. The room is at the end of the hall.



21. Poynter Hall (College of Medicine)

- a. [UNMC Maps](https://info.unmc.edu/unmc101/maps.html) <https://info.unmc.edu/unmc101/maps.html>
- b. Room PYH 6021
- c. The room has a rocker recliner, desktop computer, telephone, power sources, a sink, refrigerator, trash can, Kleenex and sanitizing supplies.
- d. Access: Open access and locks from the inside.
- e. Directions: Located on the 6th floor of Poynter Hall, requiring advance elevator and stairwell badge access. When exiting elevator, take the second left until you reach room 6021.



22. University Tower

- a. [UNMC Maps](https://info.unmc.edu/unmc101/maps.html) <https://info.unmc.edu/unmc101/maps.html>
- b. Room 4207.
- c. The room has two stations divided by curtains for privacy. The room has chairs, shelves, power sources, sanitation wipes, and a trash can.
- d. Access: To obtain access, contact Labor and Delivery at 402.559.6363.
- e. Contact: Labor and Delivery at 402-559-6363.
- f. Directions: From C Store, take stairwell 3298A to the fourth floor and exit to the left. The room will be before the double doors on your right-hand side.



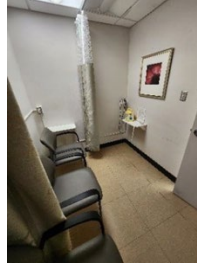
23. University Tower

- a. [UNMC Maps](https://info.unmc.edu/unmc101/maps.html) <https://info.unmc.edu/unmc101/maps.html>
- b. Room 4211
- c. This room has four stations divided by curtains for privacy. Each station has a chair, shelf, power source and trash can. Additionally, one Medela Symphony pump without parts is available in the room, as well as a sink.
- d. Access: To obtain access, contact Labor and Delivery at 402.559.6363.
- e. Contact: Labor and Delivery at 402.559.6363.
- f. Directions: From C Store, take stairwell 3298A to the fourth floor and exit to the left. The room will be in front of the double doors on your left-hand side across from the lockers.



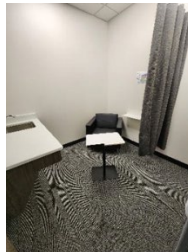
24. Wittson Hall

- a. [UNMC Maps https://info.unmc.edu/unmc101/maps.html](https://info.unmc.edu/unmc101/maps.html)
- b. Room 3051A
- c. The room has two stations divided by a curtain for privacy. It has two chairs, two shelves, power sources, and one Medela Symphony pump without parts.
- d. Access: The room has open access and locks on the inside.
- e. Directions: The room is located inside the Women's restroom. From the main entrance, walk past the stairwell and enter doors on the left. The bathroom will be on the left-hand side after going through the doorway.



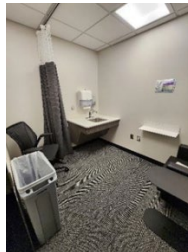
25. Wittson Hall / McGoogan Health Sciences Library

- a. [UNMC Maps https://info.unmc.edu/unmc101/maps.html](https://info.unmc.edu/unmc101/maps.html)
- b. Room 6007.
- c. The room has a chair, table, swivel stool, shelf, privacy curtain, power source, sink, and trash can.
- d. Access: The room is only accessible to employees and/or students with prior access to the McGoogan Library. The room has open access and locks on the inside.
- e. Directions: On the sixth floor, exit the elevator to the right and follow the hallway in front of the Maker Studio (ignore sign saying to turn right). Turn right at the next hallway and the room will be on your immediate right.



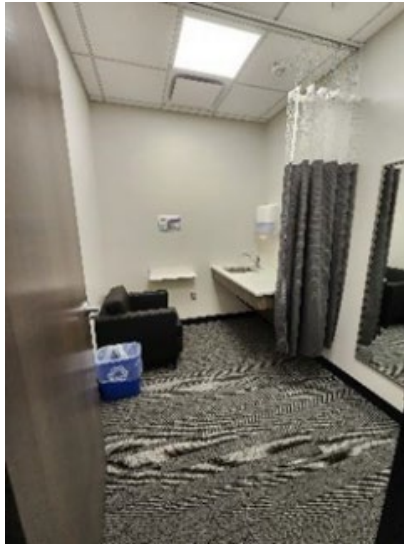
26. Wittson Hall / McGoogan Health Sciences Library

- a. [UNMC Maps https://info.unmc.edu/unmc101/maps.html](https://info.unmc.edu/unmc101/maps.html)
- b. Room 7042.
- c. The room is equipped with two chairs, table, shelf, privacy curtain, power source, sink, and trash can.
- d. Access: The room is only accessible to employees and/or students with prior access to the McGoogan Library. The room has open access and locks on the inside.
- e. Directions: Take the elevator to the sixth floor, then take the far-right elevator to the seventh floor. Exit the elevator to the right and follow signs to the second hallway on your right-hand side. Turn right and the room will be on the left-hand side across from the elevator.



27. Wittson Hall / McGoogan Health Sciences Library

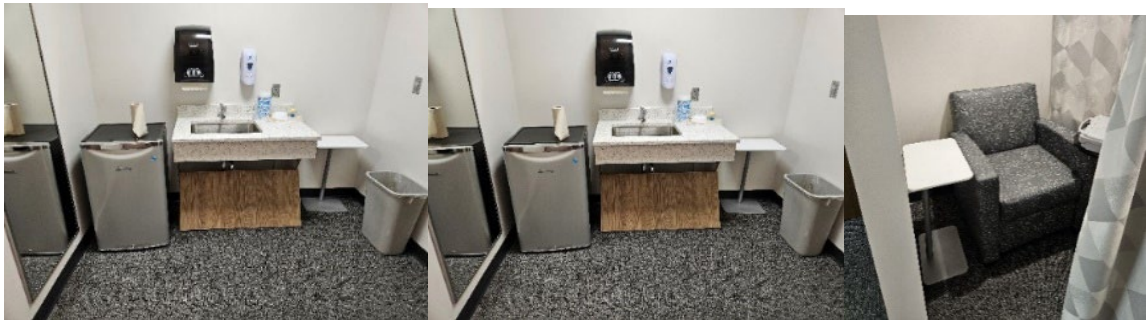
- a. [UNMC Maps](https://info.unmc.edu/unmc101/maps.html) <https://info.unmc.edu/unmc101/maps.html>
- b. Room 8004 (McGoogan Library).
- c. The room has a chair, shelf, privacy curtain, power source, sink, mirror, and trash can.
- d. Access: The room is only accessible to employees and/or students with prior access to the McGoogan Library. The room has open access and locks on the inside.
- e. Directions: Take the elevator to the sixth floor, then take the far-right elevator to the eighth floor. Exit the elevator to the right, and the room will be on your right-hand side after passing through the first doorway.



B. LINCOLN CAMPUS

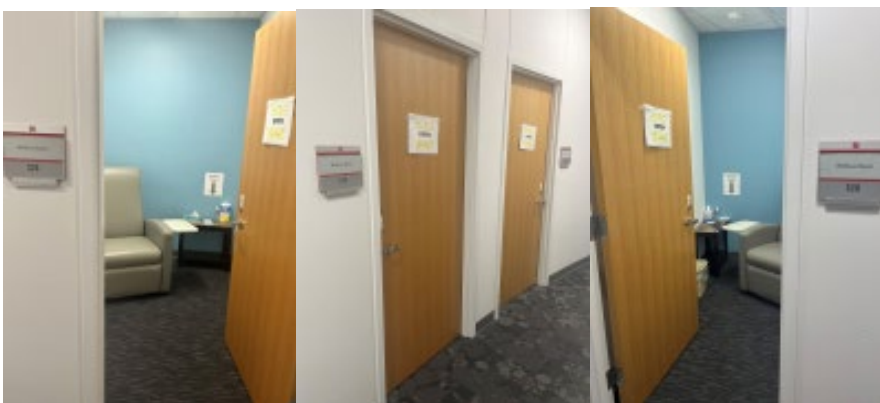
1. College of Dentistry

- a. Address: Located on the campus of the University of Nebraska at Lincoln (UNL) 4000 East Campus Loop South, Lincoln, NE 68583-0740.
- b. Room 1414.
- c. The room has three stations divided by curtains. Each station has a chair, a side table, and a power outlet. Outside of the curtain areas there is a sink, hand soap, paper towels, a small refrigerator, Clorox wipes, hand sanitizer, and a trashcan.
- d. Access: This room is locked with card access. It is set up to be a multi-person room with individual curtained partitions.
- e. Contact: Dr. Shayla Yoachim, Director of Student Success, and Wellness, at shayla.yoachim@unmc.edu or 402.472.3802.
- f. Directions: This room is in the northeast portion of the first floor, east of the student lounge.



2. College of Nursing- Lincoln Division

- a. Address: Located in the University of Nebraska-Lincoln Health Center, 550 North 19th Street, Lincoln, NE 685836.
- b. Room HCCN 326 and Room HCCN 328.
- c. There are two separate rooms available in this building. Each room has a chair, table, power source, tissues, paper towels, and a trash can. Down the hall, the third-floor break room has a sink and refrigerators.
- d. Access: Each room has open access and locks from the inside. N-Card access to the third-floor hallway is needed. For card access, contact Kendra L. Knox at kknox@unl.edu or 402.472.3656.
- e. Contact: Ann L. Callies, Academic Success Coordinator, at ann.callies@unmc.edu or 402.472.4712.
- f. Directions: The rooms are in the third-floor hallway of the College of Nursing-Lincoln. Stairs and elevators provide access to the third floor.



C. NORFOLK CAMPUS

1. Paul and Eleanor McIntosh College of Nursing

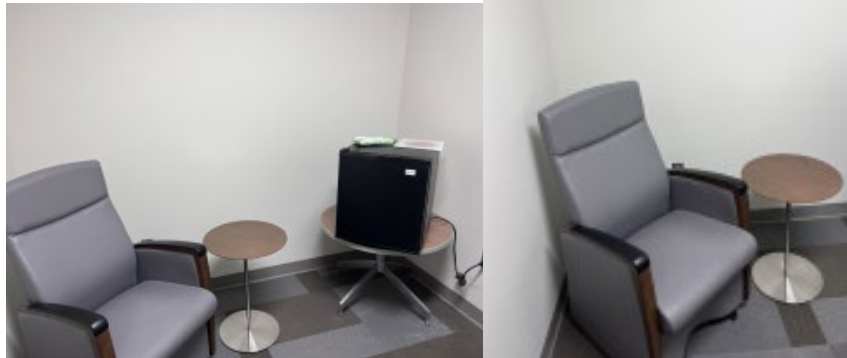
- a. Address: Located on the Northeast Community College campus, 801 East Benjamin Avenue, Norfolk, NE 68701.
- b. Room 181.
- c. The room has a chair, table, power source, privacy curtain, and trash can.
- d. Access: ID Card access is needed. For card access, contact Gwen Porter at gporter@unmc.edu or 402.844.7894.
- e. Contact: Diane Rizzo at diana.rizzo@unmc.edu or 402.844.7890.
- f. Directions: The room is on the first floor of the building down the east hallway.



D. KEARNEY CAMPUS

1. College of Nursing/College of Allied Health Professions

- Address: Located on the University of Nebraska Kearney campus, 2402 University Drive, Kearney, NE 68849.
- The room has a chair, table, power source, trash can, sink, refrigerator, and cleaning supplies.
- Access: The room has open access and locks from the inside.
- Contact: Sarah Jones at sjones1@unmc.edu or 308.865.8322.
- Directions: The room is located on the second floor and has a 'Lactation' sign on it.



E. SCOTTSBLUFF CAMPUS

1. College of Nursing- Western Nebraska Division (Scottsbluff)

- Address: Located in the Western Nebraska Community College- Scottsbluff Campus (WNCC), 2620 College Park, Scottsbluff, NE 69361.
- Room: Located in the Harms Technology Center in the Faculty Lounge Room B133.
- The room has a chair, table, power source, refrigerator, Clorox wipes, sink, hand sanitizer, and trash can.
- Access: Contact Theresa Ream, Office Associate I, at tream@unmc.edu or 308.632.0410 for the occupancy sign for the door. To use the room for lactation purposes. Students and employees must post the occupancy sign on the door and lock the room from the inside while they use the room.

Note: Building is open from 8:00 a.m. to 5:00 p.m. There will be no access available before 8:00 a.m. and after 5:00 p.m.

Directions: The room is in the Harms Technology Center on the campus of Western Nebraska Community College. The room is in the section of the building with the UNMC College of Nursing.

