



# UNMC Lactation Spaces

[Kearney Campus](#), [Lincoln Campus](#), [Norfolk Campus](#), [Omaha Campus](#), [Scottsbluff Campus](#)

## A. OMAHA CAMPUS

### 1. Buffett Cancer Center - "Fred & Pamela Buffett Cancer Center"

- [UNMC Maps https://info.unmc.edu/unmc101/maps.html](https://info.unmc.edu/unmc101/maps.html)
- Room 5.12.04
- The room has two stations, divided by a curtain for privacy. The room is equipped with two chairs, two tables, power sources, a trash can, sink, paper towels, and hand soap.
- Access: Please contact [UNMCTitleIXEducation@unmc.edu](mailto:UNMCTitleIXEducation@unmc.edu) to receive ID-Badge access.
- Point of Contact: Brianne Gourley, Director of People Operations at Nebraska Medicine, at [bgourley@nebraskamed.com](mailto:bgourley@nebraskamed.com) or 402.552.2679.
- Directions: Exit the elevator on the fifth floor and follow the signs towards Family Laundry & Shower. The room will be across from Family Laundry & Shower.



### 2. Business Services (Building 4230)

- [UNMC Maps https://info.unmc.edu/unmc101/maps.html](https://info.unmc.edu/unmc101/maps.html)
- Room 2049
- The room has two stations, each with a chair and table. Power sources and a room divider are also available.
- Access: The room is accessible by keycode 2-0-4-9-#.
- Point of Contact: IT Information Desk at 402.559.7253.
- Directions: Enter the building and turn right. The room will be in front of you at the end of the hallway.



### 3. Business Services (Building 4230)

- a. [UNMC Maps](https://info.unmc.edu/unmc101/maps.html) <https://info.unmc.edu/unmc101/maps.html>
- b. Room 2057
- c. The room has a chair, refrigerator, power source, and trash can. The bathroom is next door.
- d. Access: The room has open access and locks from the inside.
- e. Point of Contact: IT Information Desk at 402.559.7253.
- f. Directions: Enter the IT Division and turn right. Take the next right and the room will be between the bathrooms.



### 4. Clarkson Tower- **TEMPORARILY UNAVAILABLE DUE TO CONSTRUCTION**

- a. [UNMC Maps](https://info.unmc.edu/unmc101/maps.html) <https://info.unmc.edu/unmc101/maps.html>
- b. Room 4879
- c. The room has two stations, divided by a foldable curtain for privacy. The room also has tables, chairs, power sources, sink, paper towels, hand soap, mirror, toilet, and trash can.
- d. Access: Please contact [UNMCTitleIXEducation@unmc.edu](mailto:UNMCTitleIXEducation@unmc.edu) to receive ID-Badge access.
- e. Point of Contact: Stacia Kennedy, Lead Lactation Therapist at Nebraska Medicine, at [skennedy@nebraskamed.com](mailto:skennedy@nebraskamed.com) or 402.559.6363.
- f. Directions: From the Service Elevators, follow signs towards Emergency Room Holding Area Room 4881 A-G. The room will be in the hallway past the holding area.



### 5. Clarkson Tower

- a. [UNMC Maps](https://info.unmc.edu/unmc101/maps.html) <https://info.unmc.edu/unmc101/maps.html>
- b. Room 08174
- c. The room has two stations divided by a curtain for privacy. The room also has tables, power sources, television, sink, paper towels, hand soap, shower, mirror, toilet, and trash can.
- d. Access: The room has open access.
- e. Point of Contact: Stacia Kennedy, Lead Lactation Therapist at Nebraska Medicine, at [skennedy@nebraskamed.com](mailto:skennedy@nebraskamed.com) or 402.559.6363.
- f. Directions: From Elevator E, exit on the Ground floor, and turn left. Take your next left down the hallway, turn left at the hallway across from the Pulmonary Lab, and then turn left again at the following hallway. The room will be on your left-hand side.



### 6. College of Nursing

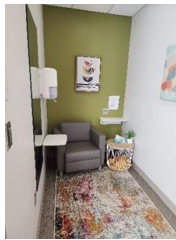
- a. [UNMC Maps](https://info.unmc.edu/unmc101/maps.html) <https://info.unmc.edu/unmc101/maps.html>

- b. Room 4064
- c. The room has one couch, chairs, table, power source, reading materials, refrigerator, and trashcan.
- d. Access: The room has open access and locks from the inside.
- e. Point of Contact: College of Nursing Dean's Office at 402.559.5414.
- f. Directions: Exit the elevators on the 4th floor, turn right, and then turn right again. Walk to the end of the hall and the room will be on your left-hand side before you hit the skywalk to CNS.



**7. Center for Drug Discovery and Lozier Center for Pharmacy Sciences and Education (College of Pharmacy)**

- a. [UNMC Maps https://info.unmc.edu/unmc101/maps.html](https://info.unmc.edu/unmc101/maps.html)
- b. Room 1039A
- c. The room has a chair, table, power source, refrigerator, mirror, trash can, and paper towels.
- d. Access: The room has open access and locks from the inside.
- e. Point of Contact: College of Pharmacy Dean's Office at 402.559.4838.
- f. Directions: The room is at the east end of the first floor, near the stairwell and compounding lab.



**8. Davis Global Center**

- a. [UNMC Maps https://info.unmc.edu/unmc101/maps.html](https://info.unmc.edu/unmc101/maps.html)
- b. Room 1007
- c. The room has a chair, table, power source, sink, paper towels, hand soap, mirror, trash can and locking refrigerator.
- d. Access: The room has open access and locks from the inside.
- e. Point of Contact: Global Center Information Desk at 402.559.3239
- f. Directions: When facing the Information desk, take the hallway to the right and the room is in the hallway behind the elevators.



**9. Durham Outpatient Center**

- a. [UNMC Maps https://info.unmc.edu/unmc101/maps.html](https://info.unmc.edu/unmc101/maps.html)
- b. Mamava Lactation Pod located in Main Lobby.
- c. The room has power sources, a bench, shelf, mirror, and hand sanitizer.
- d. Access: To obtain access, use Mamava Pod App or contact the Information Desk & Security at 402.559.5111.

- e. Point of Contact: Brianne Gourley, Director of People Operations at Nebraska Medicine, at [bgourley@nebraskamed.com](mailto:bgourley@nebraskamed.com) or 402.552.2679.
- f. Directions: Enter the main lobby and the Pod is to your right behind the escalators.



#### 10. Durham Outpatient Center

- a. [UNMC Maps](https://info.unmc.edu/unmc101/maps.html) <https://info.unmc.edu/unmc101/maps.html>
- b. Room 4654
- c. The room has a chair, shelf, sink, trashcan, and power source.
- d. Access: Access granted by the Women's Health Resource Center. Reservations for time slots are strongly recommended. If unoccupied, the room is available for drop in use.
- e. Point of Contact: Brianne Gourley, Director of People Operations at Nebraska Medicine, at [bgourley@nebraskamed.com](mailto:bgourley@nebraskamed.com) or 402.552.2679.
- f. Directions: Exit the elevators on the fourth floor to the left and the Resource Center will be in front of you.



#### 11. Durham Research Center I

- a. [UNMC Maps](https://info.unmc.edu/unmc101/maps.html) <https://info.unmc.edu/unmc101/maps.html>
- b. Room 1007C
- c. The room has two stations divided by a curtain for privacy. It has two couches with tables, power sources, sink, paper towels, hand soap, mirror, trash can, and white board.
- d. Access: Please contact Julie A. Sommer at [julie.sommer@unmc.edu](mailto:julie.sommer@unmc.edu) or Dorene M. Scheffel at [dorene.scheffel@unmc.edu](mailto:dorene.scheffel@unmc.edu) to received ID-badge access.
- e. Point of Contact: Dorene Scheffel at [dorene.scheffel@unmc.edu](mailto:dorene.scheffel@unmc.edu) or 402.559.3004.
- f. Directions: From the DRC1 lobby, enter the hallway to the left of the elevators and go through doorway 1099G between classrooms 1005 and 1006. The room will be past the break area on the right-hand side.



#### 12. Durham Research Center II

- a. [UNMC Maps](https://info.unmc.edu/unmc101/maps.html) <https://info.unmc.edu/unmc101/maps.html>
- b. Mamava Lactation Pod located in the Main Lobby.
- c. The room has two benches, shelves, power sources, mirror, trashcan, and cleaning supplies.
- d. Access: Accessed through the Mamava App or by contacting Dorene Scheffel at [dorene.scheffel@unmc.edu](mailto:dorene.scheffel@unmc.edu) or 402.559.3004.

- e. Point of Contact: Dorene Scheffel at [dorene.scheffel@unmc.edu](mailto:dorene.scheffel@unmc.edu) or 402.559.3004.
- f. Directions: Enter the lobby of DRC2 and the Pod will be on your right-hand side.



### 13. East Campus Corporate Pavilion (ECCP)

- a. [UNMC Maps](https://info.unmc.edu/unmc101/maps.html) <https://info.unmc.edu/unmc101/maps.html>
- b. Room 3030
- c. The room has a chair, table, power source, sink, paper towels, and hand soap.
- d. Access: The room has open access and locks on the inside.
- e. Point of Contact: Brianne Gourley, Director of People Operations at Nebraska Medicine, at [bgourley@nebraskamed.com](mailto:bgourley@nebraskamed.com) or 402.552.2679.
- f. Directions: The room is on the third floor of the Mutual of Omaha Bank building at 3333 Farnam Street. From the third floor Information Desk, go left down the hallway. Turn left. Walk past the printer area. Turn left. The room will be on your left.



### 14. East Campus Corporate Pavilion (ECCP)

- a. [UNMC Maps](https://info.unmc.edu/unmc101/maps.html) <https://info.unmc.edu/unmc101/maps.html>
- b. Room 3068
- c. The room has a recliner, sink, paper towels, hand soap, mirror, power source, refrigerator, and trash can.
- d. Access: The room has open access and locks on the inside.
- e. Point of Contact: Brianne Gourley, Director of People Operations at Nebraska Medicine, at [bgourley@nebraskamed.com](mailto:bgourley@nebraskamed.com) or 402.552.2679.
- f. Directions: The room is on the third floor of the Mutual of Omaha Bank building at 3333 Farnam Street. From the third floor Information Desk, turn right. Go through Door 3099K. Walk past the cubicle area. The door will be next to the women's restroom on the right.



### 15. East Campus Corporate Pavilion (ECCP)

- a. [UNMC Maps](https://info.unmc.edu/unmc101/maps.html) <https://info.unmc.edu/unmc101/maps.html>
- b. Room 4077
- c. The room has a recliner, chair, table, power source, sink, paper towels, hand soap, mirror, refrigerator, and trash can.
- d. Access: The room has open access and locks on the inside.

- e. Point of Contact: Brianne Gourley, Director of People Operations at Nebraska Medicine, at [bgourley@nebraskamed.com](mailto:bgourley@nebraskamed.com) or 402.552.2679.
- f. Directions: The room is on the fourth floor of the Mutual of Omaha Bank building at 3333 Farnam Street. From the 4th floor Information Desk, turn right. Turn right near the cubicle area. Turn right under the “exit” sign. The room will be on your right at the end of the hallway.



#### 16. Joseph D. & Millie E. Williams Science Hall

- a. [UNMC Maps https://info.unmc.edu/unmc101/maps.html](https://info.unmc.edu/unmc101/maps.html)
- b. The room is between Room 1.011 and Room 1.013
- c. The room has a chair with an attached table, sink, hand soap, mirror, paper towels, and a power source.
- d. Access: The room has open access and locks on the inside.
- e. Point of Contact:
- f. Directions: The room is on the first floor. At the Student Accounts / Cashier windows, take a left. The room will be on your right before the double doors.



#### 17. Lauritzen Outpatient Center

- a. [UNMC Maps https://info.unmc.edu/unmc101/maps.html](https://info.unmc.edu/unmc101/maps.html)
- b. Room 1.14.014
- c. The room has two stations, divided by a wall and privacy curtains. The room is equipped with two chairs, two tables, power sources, refrigerator, paper towels, and trash can. Lockers are available for use. Individuals must provide their own lock.
- d. Access: The room has open access and locks from the inside.
- e. Point of Contact:
- f. Directions: From the main entrance, turn left and walk through the waiting room. The lactation room will be the second door on the right at the end of the hallway.



#### 18. Michael F. Sorrell Center for Health Science Education (College of Medicine)

- a. [UNMC Maps https://info.unmc.edu/unmc101/maps.html](https://info.unmc.edu/unmc101/maps.html)
- b. Room 3013
- c. The room has two stations which can be divided by curtains for privacy. The room has two couches, power sources, a sink, paper towels, hand soap, and trash can.

- d. Access: Contact the UNMC Title IX Office at [UNMCEducationTitleIX@unmc.edu](mailto:UNMCEducationTitleIX@unmc.edu) to receive ID-badge access.
- e. Point of Contact:
- f. Directions: Exit the elevator on the third floor to the right, turn right again and the room will be on your left-hand side past the wheelchair accessible bathroom.



#### 19. Maurer Center for Public Health (College of Public Health)

- a. [UNMC Maps](https://info.unmc.edu/unmc101/maps.html) <https://info.unmc.edu/unmc101/maps.html>
- b. Room 2059
- c. The room has a chair, table, refrigerator, sink, paper towels, hand soap, trash can, mirror, and power source.
- d. Access: The room has open access and locks from the inside.
- e. Point of Contact:
- f. Directions: Enter from the South end of the building. The room will be on your right-hand side near the wheelchair accessible bathroom.



#### 20. Medical Science Building

- a. [UNMC Maps](https://info.unmc.edu/unmc101/maps.html) <https://info.unmc.edu/unmc101/maps.html>
- b. Room 2520D
- c. The room has a reclining chair, table, sink, paper towels, hand soap, refrigerator, power source, and trash can.
- d. Access: The room is in the House Officer Wellness Lounge (HOWL). This room is only accessible to individuals with prior access to this area.
- e. Point of Contact: Brianne Gourley, Director of People Operations at Nebraska Medicine, at [bgourley@nebraskamed.com](mailto:bgourley@nebraskamed.com) or 402.552.2679.
- f. Directions: Exit the elevator from University Tower on the 2nd floor and follow signs for "Surgery Patients and Family Only" into Hixon-Lied. Turn left down the hallway towards Buffet Cancer Center and the Wellness Lounge, Room 2520, will be on your right-hand side before you reach the elevators. Room 2520D is within the lounge, the last room down the hallway.



#### 21. Munroe-Meyer Institute (MMI)

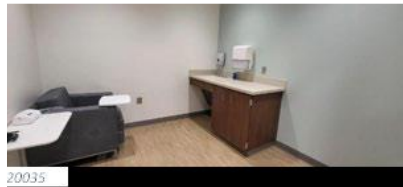
- a. [UNMC Maps](https://info.unmc.edu/unmc101/maps.html) <https://info.unmc.edu/unmc101/maps.html>
- b. Room 10033

- c. The room has a chair, side table, power source, mirror, trashcan, sink, hand soap, and paper towels.
- d. Access: The room has open access and locks from the inside.
- e. Point of Contact: MMI Clinic Nurse Manager at 402.559.2297.
- f. Directions: 10033; From the east entrance, the room is straight forward and just to the right in the main hallway. The front desk receptionist can help with directions if needed.



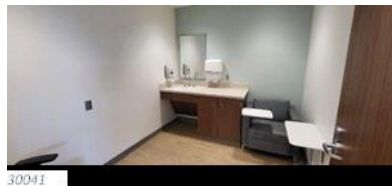
**22. Munroe-Meyer Institute (MMI)**

- a. [UNMC Maps https://info.unmc.edu/unmc101/maps.html](https://info.unmc.edu/unmc101/maps.html)
- b. Room 20035
- c. The room has a chair, side table, power source, mirror, trashcan, sink, hand soap, and paper towels.
- d. Access: The room has open access and locks from the inside.
- e. Point of Contact: MMI Clinic Nurse Manager at 402.559.2297.
- f. Directions: 20035; From the east entrance take the main elevators to the second floor. The room is straight ahead just past the waiting area on the left side wall.



**23. Munroe-Meyer Institute (MMI)**

- a. [UNMC Maps https://info.unmc.edu/unmc101/maps.html](https://info.unmc.edu/unmc101/maps.html)
- b. Room 30041
- c. The room has a chair, side table, power source, mirror, trashcan, sink, hand soap, and paper towels.
- d. Access: The room has open access and locks from the inside.
- e. Point of Contact: MMI Clinic Nurse Manager at 402.559.2297.
- f. Directions: 30041; From the east entrance, take the main elevators to the third floor. The room is to the right of the check-in desk.



**24. Munroe-Meyer Institute (MMI)**

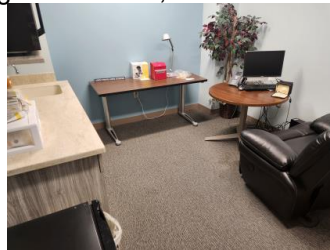
- a. [UNMC Maps https://info.unmc.edu/unmc101/maps.html](https://info.unmc.edu/unmc101/maps.html)
- b. Room 40006
- c. The room has a chair, side table, power source, mirror, trashcan, sink, hand soap, and paper towels.
- d. Access: The room has open access and locks on the inside.
- e. Point of Contact: MMI Clinic Nurse Manager at 402.559.2297.

- f. Directions: 40006; From the east entrance take the main elevators to the fourth floor. Go right out of the elevators and past the administration suite. The room is at the end of the hall.



## 25. Poynter Hall (College of Medicine)

- [UNMC Maps https://info.unmc.edu/unmc101/maps.html](https://info.unmc.edu/unmc101/maps.html)
- Room 6021
- The room has a chair, power sources, sink, paper towels, hand soap, refrigerator, and trash can
- Access: The room has open access and locks from the inside.
- Point of Contact:
- Directions: Located on the 6<sup>th</sup> floor of Poynter Hall, requiring advance elevator and stairwell badge access. When exiting the elevator, take the second left until you reach room 6021.



## 26. Truhlsen Eye Institute

- [UNMC Maps https://info.unmc.edu/unmc101/maps.html](https://info.unmc.edu/unmc101/maps.html)
- Room 1010A
- The room has a chair, table, and power source. There is access to a sink, refrigerator, hand soap, and paper towels directly outside the room.
- Access: The room has open access and locks from the inside.
- Point of Contact: Truhlsen Eye Institute Information Desk at 402.559.2020.
- Directions: The lactation room is located within the employee break room on the 1<sup>st</sup> floor. From the main entrance, enter the first clinic door on the right. Take the first right down the hallway and walk through the door at the end. Turn left and walk down the hallway. The room is the first door on the left.



## 27. University Tower

- [UNMC Maps https://info.unmc.edu/unmc101/maps.html](https://info.unmc.edu/unmc101/maps.html)
- Room 4207
- The room has two stations divided by curtains for privacy. The room has chairs, shelves, power sources, and a trash can.
- Access: To obtain door access code, contact Stacia Kennedy, Lead Lactation Therapist at Nebraska Medicine, at [skennedy@nebraskamed.com](mailto:skennedy@nebraskamed.com) or 402.559.6363.
- Point of Contact: Brianne Gourley, Director of People Operations at Nebraska Medicine, at [bgourley@nebraskamed.com](mailto:bgourley@nebraskamed.com) or 402.552.2679.

- f. Directions: From C Store, take stairwell 3298A to the fourth floor and exit to the left. The room will be before the double doors on your right-hand side.



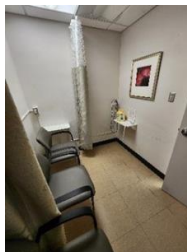
## 28. University Tower

- [UNMC Maps](https://info.unmc.edu/unmc101/maps.html) <https://info.unmc.edu/unmc101/maps.html>
- Room 4211
- This room has four stations divided by curtains for privacy. Each station has a chair, shelf, power source, trash can, and sink.
- Access: To obtain door access code, contact Stacia Kennedy, Lead Lactation Therapist at Nebraska Medicine, at [skennedy@nebraskamed.com](mailto:skennedy@nebraskamed.com) or 402.559.6363
- Point of Contact: Brianne Gourley, Director of People Operations at Nebraska Medicine, at [bgourley@nebraskamed.com](mailto:bgourley@nebraskamed.com) or 402.552.2679.
- Directions: From C Store, take stairwell 3298A to the fourth floor and exit to the left. The room will be in front of the double doors on your left-hand side across from the lockers.



## 29. Wittson Hall

- [UNMC Maps](https://info.unmc.edu/unmc101/maps.html) <https://info.unmc.edu/unmc101/maps.html>
- Room 3051A
- The room has two stations divided by a curtain for privacy. It has two chairs, two shelves, and power sources.
- Access: The room has open access and locks from the inside.
- Point of Contact:
- Directions: The room is located inside the Women's restroom. From the main entrance, walk past the stairwell and enter doors on the left. The bathroom will be on the left-hand side after going through the doorway.



## 30. Wittson Hall / McGoogan Health Sciences Library

- [UNMC Maps](https://info.unmc.edu/unmc101/maps.html) <https://info.unmc.edu/unmc101/maps.html>
- Room 6007
- The room has a chair, table, shelf, privacy curtain, power source, sink, paper towels, hand soap, and trash can.
- Access: The room is only accessible to employees and/or students with prior access to the McGoogan Library. The room has open access and locks from the inside.
- Point of Contact:

- f. Directions: On the sixth floor, exit the elevator to the right and follow the hallway in front of the Maker Studio (ignore sign saying to turn right). Turn right at the next hallway and the room will be on your immediate right.



### 31. Wittson Hall / McGoogan Health Sciences Library

- [UNMC Maps](https://info.unmc.edu/unmc101/maps.html) <https://info.unmc.edu/unmc101/maps.html>
- Room 7042
- The room is equipped with two chairs, table, shelf, curtain, power source, sink, paper towels, hand soap, and trash can.
- Access: The room is only accessible to employees and/or students with prior access to the McGoogan Library. The room has open access and locks from the inside.
- Point of Contact:
- Directions: Take the elevator to the sixth floor, then take the far-right elevator to the seventh floor. Exit the elevator to the right and follow signs to the second hallway on your right-hand side. Turn right and the room will be on the left-hand side across from the elevator.



### 32. Wittson Hall / McGoogan Health Sciences Library

- [UNMC Maps](https://info.unmc.edu/unmc101/maps.html) <https://info.unmc.edu/unmc101/maps.html>
- Room 8004
- The room has a chair, shelf, privacy curtain, power source, sink, paper towels, hand soap, mirror, and trash can.
- Access: The room is only accessible to employees and/or students with prior access to the McGoogan Library. The room has open access and locks from the inside.
- Point of Contact
- Directions: Take the elevator to the sixth floor, then take the far-right elevator to the eighth floor. Exit the elevator to the right, and the room will be on your right-hand side after passing through the first doorway.



## B. LINCOLN CAMPUS

### 1. College of Dentistry

- Address: Located on the campus of the University of Nebraska at Lincoln (UNL), 4000 East Campus Loop South, Lincoln, NE 68583-0740.
- Room 1414

- c. The room has three stations divided by curtains. Each station has a chair, a side table, and a power outlet. Outside of the curtain areas there is a sink, hand soap, paper towels, a small refrigerator, and trash can.
- d. Access:
- e. Point of Contact:
- f. Directions: This room is in the northeast portion of the first floor, east of the student lounge.



## 2. College of Nursing- Lincoln Division

- a. Address: Located in the University of Nebraska-Lincoln Health Center, 550 North 19<sup>th</sup> Street, Lincoln, NE 685836.
- b. Room HCCN 326 and Room HCCN 328
- c. There are two separate rooms available in this building. Each room has a chair, table, power source, paper towels, and a trash can. Down the hall, the third-floor break room has a sink, paper towels, hand soap, and refrigerators.
- d. Access: Each room has open access and locks from the inside. N-Card access to the third-floor hallway is needed. For card access, contact Kendra L. Knox at [kknox@unmc.edu](mailto:kknox@unmc.edu) or 402.472.3656.
- e. Point of Contact: Ann L. Callies, Academic Success Coordinator, at [ann.callies@unmc.edu](mailto:ann.callies@unmc.edu) or 402.472.4712.
- f. Directions: The rooms are in the third-floor hallway of the College of Nursing-Lincoln. Stairs and elevators provide access to the third floor.



## C. NORFOLK CAMPUS

### 1. Paul and Eleanor McIntosh College of Nursing

- a. Address: Located on the Northeast Community College campus, 801 East Benjamin Avenue, Norfolk, NE 68701
- b. Room 181
- c. The room has a chair, table, power source, privacy curtain, and trash can.
- d. Access: Contact Gwen Porter at [gporter@unmc.edu](mailto:gporter@unmc.edu) or 402.844.7894 to receive ID-badge access.

- e. Point of Contact: Diane Rizzo at [diana.rizzo@unmc.edu](mailto:diana.rizzo@unmc.edu) or 402.844.7890.
- f. Directions: The room is on the first floor of the building down the east hallway.



## D. KEARNEY CAMPUS

### 1. College of Nursing/College of Allied Health Professions

- a. Address: Located on the University of Nebraska Kearney campus, 2402 University Drive, Kearney, NE 68849.
- b. The room has a chair, table, power source, trash can, sink, paper towels, hand soap, and refrigerator.
- c. Access: The room has open access and locks from the inside.
- d. Point of Contact: Sarah Jones at [sjones1@unmc.edu](mailto:sjones1@unmc.edu) or 308.865.8322.
- e. Directions: The room is located on the second floor and has a 'Lactation' sign on it.



## E. SCOTTSBLUFF CAMPUS

### 1. College of Nursing- Western Nebraska Division (Scottsbluff)

- a. Address: Located in the Western Nebraska Community College- Scottsbluff campus (WNCC), 2620 College Park, Scottsbluff, NE 69361.
- b. Room: Located in the Harms Technology Center in the Faculty Lounge Room B133.
- c. The room has a chair, table, power source, refrigerator, sink, hand soap, paper towels, and trash can.
- d. Access: Contact Theresa Ream, at [tream@unmc.edu](mailto:tream@unmc.edu) or 308.632.0410, to receive the occupancy sign for the door. To use the room for lactation purposes, students and employees must post the occupancy sign on the door and lock the room from the inside while they use the room. **Note:** Building is open from 8:00 a.m. to 5:00 p.m. There will be no access available before 8:00 a.m. and after 5:00 p.m.
- e. Point of Contact: Theresa Ream at [tream@unmc.edu](mailto:tream@unmc.edu) or 308.632.0410.
- f. Directions: The room is in the Harms Technology Center on the campus of Western Nebraska Community College. The room is in the section of the building with the UNMC College of Nursing.

